

High load extreme pressure bearing grease

LNEP 2IN

SKF LNEP 2IN is a mineral oil based lithium soap thickened grease with extreme pressure additives. This grease provides good lubrication in general applications subjected to harsh conditions and vibrations.

- Good mechanical stability
- Good water resistance and corrosion protection
- Good EP / AW properties

Typical applications

- Mining and construction equipment
- Heavy machinery
- Vibrating screens



Available pack sizes

Pack Size	Designation
1 kg pail	LNEP 2IN/1
5 kg pail	LNEP 2IN/5
18 kg pail	LNEP 2IN/18
180 kg drum	LNEP 2IN/180

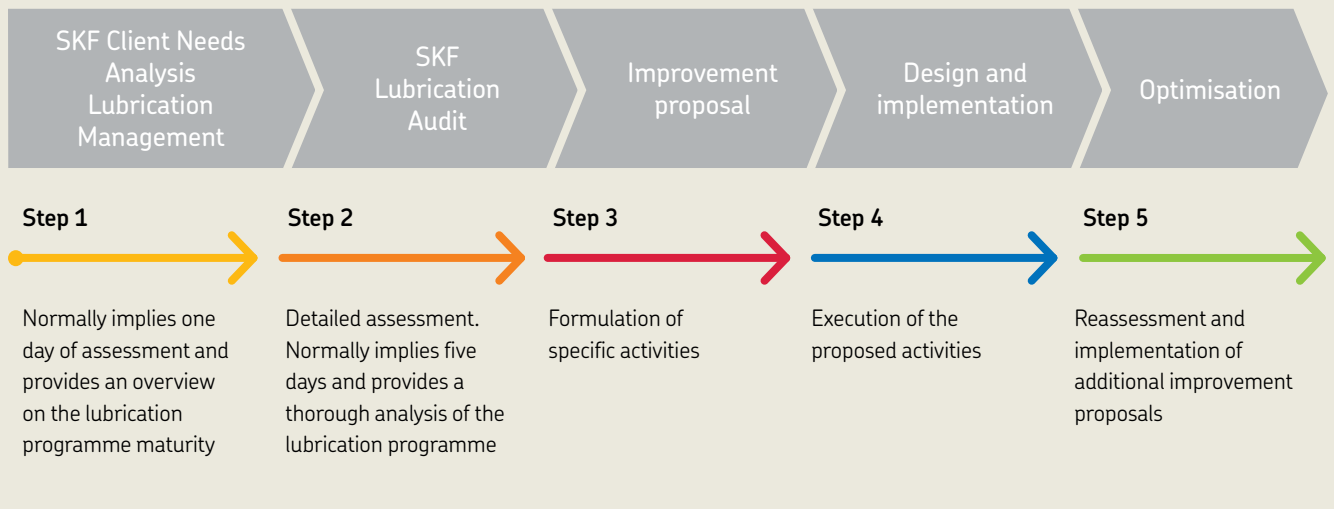


Technical data

Designation	LNEP 2IN/(pack size)		
NLGI consistency class	2	Corrosion protection Emcor: – Standard ISO 11007	0–0
Thickener	Lithium	Water resistance DIN 51 807/1, 3 hrs at 90 °C	1 max.
Colour	Red brown	Oil separation IP 121, 7 days at 40 °C	2–6
Base oil type	Mineral	Lubrication ability R2F, running test B at 110 °C	Pass
Operating temperature range	–15 to +110 °C (–5 to +230 °F)	Copper corrosion ASTM D4049 @ 100 °C	2b max.
Dropping point DIN ISO 2176	>180 °C (>355 °F)	EP performance Wear scar DIN 51350/5, 1 400 N, mm 4–ball test, welding load DIN 51350/4, N	2 max 2 800 min.
Base oil viscosity: 40 °C, mm ² /s 100 °C, mm ² /s	210 * 16		
Penetration DIN ISO 2137 60 strokes, 10 ⁻¹ mm 100 000 strokes, 10 ⁻¹ mm	265–295 +50 max. (325 max.)		
Mechanical stability: Roll stability, 50 hrs at 80 °C, 10 ⁻¹ mm	+50 max.	*Typical value	

Lubrication management

Just as asset management takes maintenance to a higher level, a lubrication management approach allows lubrication to be seen from a wider point of view. This approach helps to effectively increase machine reliability at a lower overall cost.



skf.com | mapro.skf.com | skf.com/lubrication

© SKF is a registered trademark of the SKF Group.

© SKF Group 2018

The contents of this publication are the copyright of the publisher and may not be reproduced (even extracts) unless prior written permission is granted. Every care has been taken to ensure the accuracy of the information contained in this publication but no liability can be accepted for any loss or damage whether direct, indirect or consequential arising out of the use of the information contained herein.

PUB MP/P8 18070 EN · September 2018

Certain image(s) used under license from Shutterstock.com.

SKF India Limited

M.G.M. Building

Netaji Subhash Road

Mumbai- 400 002