

Accessories

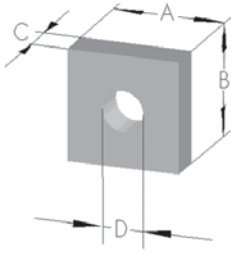


Accessories

Slide nuts

Square nut

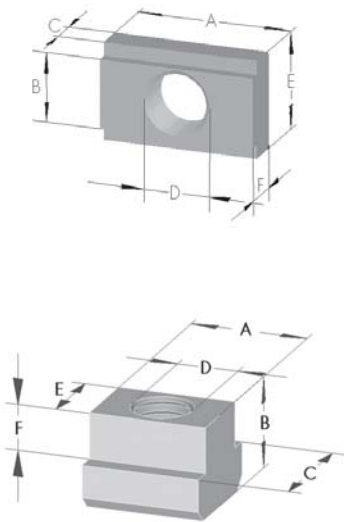
Slide nuts position refer to chapter 2.2 page 3
Material: galvanized steel



| Code-No. | Type | A | B | C | D |
|----------|------|----|----|-----|------|
| 02708 | M 4 | 7 | 7 | 2,2 | M 4 |
| 02710 | M 5 | 8 | 8 | 2,7 | M 5 |
| 02715 | M 6 | 10 | 10 | 3,2 | M 6 |
| 02714 | M 8 | 13 | 13 | 4 | M 8 |
| 02713 | M 10 | 17 | 17 | 5 | M 10 |
| 02721 | M 10 | 25 | 20 | 8 | M 10 |

T-nut

Slide nuts position refer to chapter 2.2 page 3
Material: galvanized steel

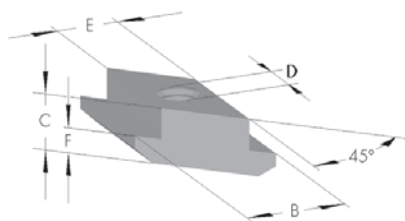


| Code-No. | Type | A | B | C | D | E | F |
|----------|------|----|-----|-----|------|----|---|
| 02709 | M 5 | 14 | 8,5 | 4,7 | M 5 | 14 | 6 |
| 02716 | M 6 | 14 | 8,5 | 4,7 | M 6 | 14 | 6 |
| 02718 | M 8 | 18 | 8,5 | 4,7 | M 8 | 14 | 6 |
| 02719 | M10 | 22 | 10 | 4,7 | M 10 | 14 | 6 |
| 02730 | M 6 | 13 | 10 | 4 | M 6 | 15 | 8 |
| 02731 | M 8 | 13 | 10 | 4 | M 8 | 15 | 8 |

| Code-No. | Type | A | B | C | D | E | F |
|----------|------|----|----|----|------|----|----|
| 02734 | M 5 | 10 | 8 | 10 | M 5 | 6 | 4 |
| 02735 | M 6 | 13 | 10 | 13 | M 6 | 8 | 4 |
| 02736 | M 8 | 15 | 12 | 15 | M 8 | 10 | 6 |
| 02720 | M 10 | 18 | 14 | 18 | M 10 | 12 | 7 |
| 02722 | M 12 | 22 | 16 | 22 | M 12 | 14 | 8 |
| 02737 | M 16 | 28 | 20 | 28 | M 16 | 18 | 10 |

Rhombus nut

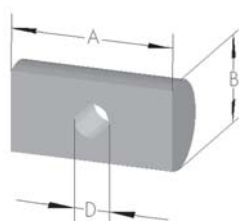
Slide nuts position refer to chapter 2.2 page 3
Material: galvanized steel



| Code-No. | Type | B | C | D | E | F |
|----------|------|----|---|-----|----|-----|
| 02732 | M 8 | 15 | 9 | M 8 | 10 | 4,2 |
| 02733 | M 6 | 15 | 9 | M 6 | 10 | 4,2 |

Half round nut

For guide body profile EL, QL / QS and for fastening of jointing and mounting blocks. Material: galvanized steel

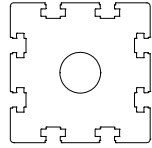


| Code-No. | Type | A | B | D |
|----------|------|----|----|--------|
| 02724 | M 3 | 28 | 5 | 2x M 3 |
| 02725 | M 5 | 14 | 6 | M 5 |
| 02726 | M 6 | 18 | 10 | M 6 |
| 02728 | M 8 | 22 | 12 | M 8 |
| 02729 | M 8 | 22 | 16 | M 8 |
| 02723 | M10 | 25 | 20 | M10 |

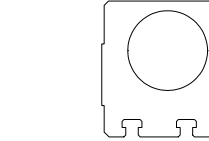
T-nut allocation

Bearing block profile EL

| Size | T-slot nut slot AA Code Nr. | T-slot nut slot NN Code Nr. |
|-------|-----------------------------|-----------------------------|
| 30 | 02715 | 02715 |
| 40 | 02710 | 02715 |
| 60 | 02710 | 02718 |
| 80 | 02714 | 02719 |
| 80(S) | 02714 | 02719 |
| 100 | 02714 | 02720 |
| 125 | 02736 | 02722 |

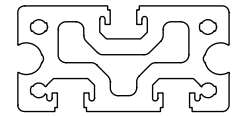


Bearing block profile ELZ



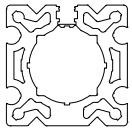
| Size | T-slot nut slot M Code Nr. |
|-------|----------------------------|
| 40 | 02735 |
| 60 | 02731/02719 |
| 80(S) | 02736 |
| 100 | 02720 |
| 125 | 02722 |

Guide body profile E



| Size | T-slot nut slot CC Code Nr. |
|------|-----------------------------|
| 40 | 02730 / 02731 |
| 60 | 02730 / 02731 |
| 80 | 02730 / 02731 |

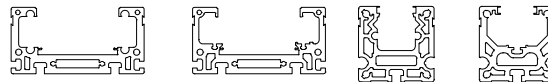
Guide body profile EL / EG



| Size | T-slot nut slot CC Code Nr. |
|-------------|-----------------------------|
| EL 30 | 02715 |
| EL/EG 40 | 02718 |
| EL/EG 60 | 02718 |
| EL/EG 80(S) | 02718 |
| EL 100 | 02721 |
| EL 125 | 02721 |

Guide body profile

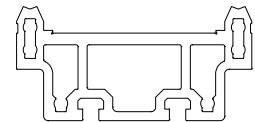
DL / DS / QL / QS



| Size | T-slot nut slot N Code Nr. | T-slot nut slot M Code Nr. | T-slot nut slot T* Code Nr. |
|-----------|----------------------------|----------------------------|-----------------------------|
| DL 120 | 02735 | 02734 | - |
| DL/DS 160 | 02736 | 02735 | 02708 |
| DL/DS 200 | 02720 | 02736 | - |
| QL/QS 60 | 02734 | - | 02708 |
| QL/QS 80 | 02735 | - | 02710 |
| QL/QS 100 | 02720 | - | 02716 |

* only for DS/QS guide body profile

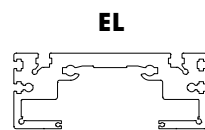
Guide body profile ALLM



| Size | T-slot nut slot N Code Nr. |
|------|----------------------------|
| 200 | 02737 |

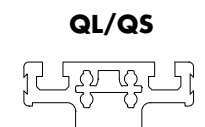
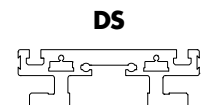
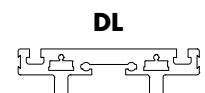
Carriage profile EL / EG

| Size | T-slot nut slot OO Code Nr. | T-slot nut slot MM Code Nr. |
|------|-----------------------------|-----------------------------|
| 30 | 02715 | - |
| 40 | 02716/02709 | - |
| 60 | 02718 | - |
| 80 | 02718/02719 | 02715 |
| 80S | 02736 | 02735 |
| 100 | 02720 | 02713 |
| 125 | 02722 | 02720 |



Carriage profile DL / DS / QL / QS

| Size | T-slot nut slot O Code Nr. | T-slot nut slot M Code Nr. |
|------------|----------------------------|----------------------------|
| DL 120 | 02735 | - |
| DL/DS 160 | 02736 | - |
| DL/DS 200 | 02720 | - |
| QL/QS 60 | - | 02735 |
| QL / QS 80 | - | 02736 |
| QL/QS 100 | - | 02720 |



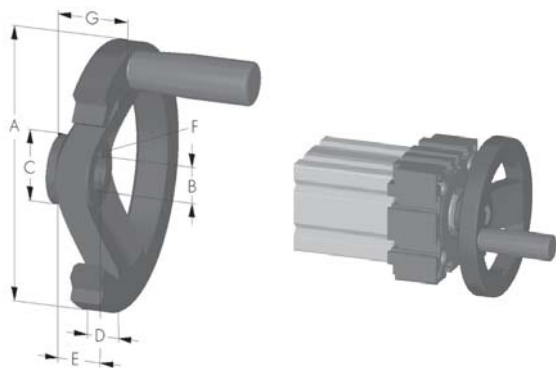
Slide nut dimensions refer to chapter 2.2 page 2

Accessories

Handwheel Positional Indicator Clamp

Handwheel with keyway and locking screw

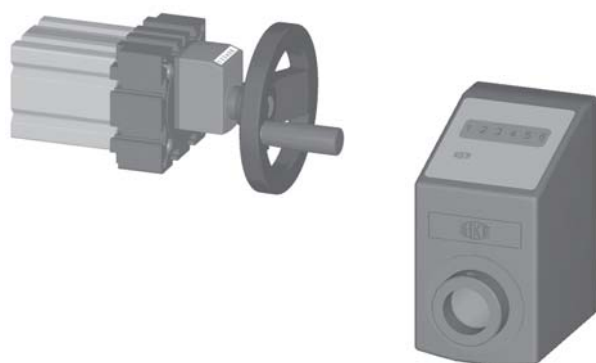
A plastic coated aluminium handwheel with a matt black finish. Equipped with a black handle.



| Code-No. | Type | A | B | C | D | E | F | G |
|----------|------|-----|----|----|------|----|-----|----|
| 00050 | 30 | 70 | 5 | 17 | 13 | 15 | - | 20 |
| 00100 | 40 | 100 | 10 | 29 | 14,5 | 17 | 3x3 | 30 |
| 00160 | 60 | 140 | 14 | 36 | 16,5 | 19 | 5x5 | 36 |
| 00200 | 80 | 200 | 18 | 42 | 20,5 | 24 | 6x6 | 45 |
| 00222 | 100 | 200 | 22 | 42 | 20,5 | 24 | 6x6 | 45 |

Positional indicator EL / EG

Shell made of polyamide orange. Ambient temperature 80°C. Any fitting position possible. Numeral height 6 mm. Accuracy of reading 0,1 mm.



Code No. 00265 - 00268
electronical indicator



| Code-No. | Size | AxBxC | D | type | pitch (mm) |
|----------|------------|----------|----------|------|------------|
| 00231.. | 30 | 33x47x31 | 6 | SH | 2,5 or 3 |
| 00232.. | 30 | 33x47x31 | 6 | FH | 2,5 or 3 |
| 00233.. | 30 | 33x47x31 | 6 | SV | 2,5 or 3 |
| 00234.. | 30 | 33x47x31 | 6 | FV | 2,5 or 3 |
| 00241.. | 40, 60, 80 | 48x67x51 | 12,17,20 | SH | 4 or 8 |
| 00242.. | 40, 60, 80 | 48x67x51 | 12,17,20 | FH | 4 or 8 |
| 00243.. | 40, 60, 80 | 48x67x51 | 12,17,20 | SV | 4 or 8 |
| 00244.. | 40, 60, 80 | 48x67x51 | 12,17,20 | FV | 4 or 8 |
| 00251.. | 40, 60, 80 | 48x67x51 | 12,17,20 | SH | 5 or 10 |
| 00252.. | 40, 60, 80 | 48x67x51 | 12,17,20 | FH | 5 or 10 |
| 00253.. | 40, 60, 80 | 48x67x51 | 12,17,20 | SV | 5 or 10 |
| 00254.. | 40, 60, 80 | 48x67x51 | 12,17,20 | FV | 5 or 10 |
| 00261.. | 100, 125 | 56x75x64 | 25,30 | SH | 6 or 12 |
| 00262.. | 100, 125 | 56x75x64 | 25,30 | FH | 6 or 12 |
| 00263.. | 100, 125 | 56x75x64 | 25,30 | SV | 6 or 12 |
| 00264.. | 100, 125 | 56x75x64 | 25,30 | FV | 6 or 12 |
| 00265.. | 40, 60, 80 | 48x87x71 | 12,17,20 | SH | 0,01 - 10 |
| 00266.. | 40, 60, 80 | 48x87x71 | 12,17,20 | FH | 0,01 - 10 |
| 00267.. | 40, 60, 80 | 48x87x71 | 12,17,20 | SV | 0,01 - 10 |
| 00268.. | 40, 60, 80 | 48x87x71 | 12,17,20 | FV | 0,01 - 10 |

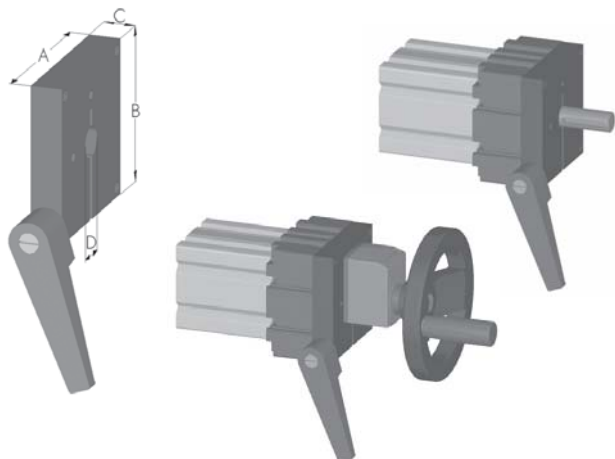
0024108

Sample ordering code: size 40, 8 mm pitch increasing horizontal.



Spindle clamp EL / EG, DL / DS /QST/K

Black anodized aluminium, steel hand lever.



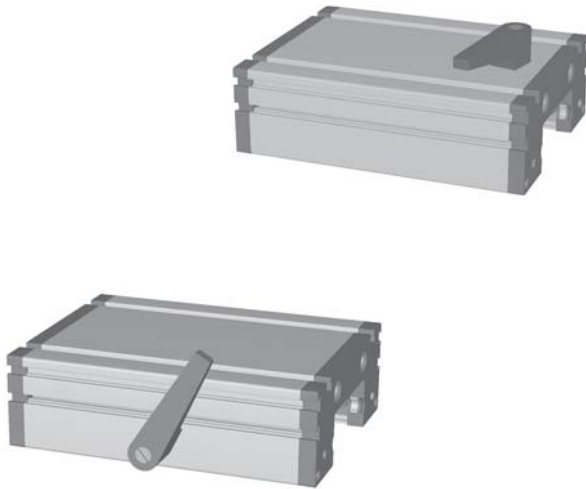
| Code-No. | Type | A | B | C | D | Hand-lever |
|----------|------------------------|-----|-----|----|----|------------|
| 00291 | EL/EG 30 | 43 | 50 | 10 | 6 | M 6 |
| 00292 | EL/EG 40 | 58 | 70 | 10 | 12 | M 6 |
| 00293 | EL/EG 60 | 80 | 80 | 15 | 17 | M 8 |
| 00294 | EL/EG 80 | 100 | 100 | 20 | 20 | M10 |
| 00295 | E 100 | 130 | 130 | 20 | 25 | M10 |
| 00296 | E 125 | - | - | - | - | - |
| 00283 | DL 120 | 62 | 80 | 15 | 12 | M 6 |
| 00284 | DL/DS 160 | 80 | 90 | 20 | 17 | M 8 |
| 00285 | DL/DS 200 QST/K 100 | 90 | 99 | 20 | 25 | M 10 |
| 00286 | QST/K 80 | 80 | 90 | 20 | ? | M 8 |
| 00287 | QST/K 60 | 62 | 80 | 15 | ? | M 6 |

Accessories

Clamp Mounting systems

Carriage clamp EL / EG

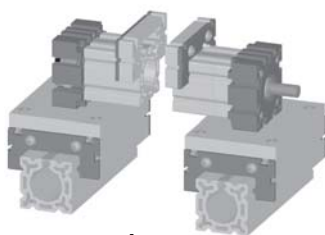
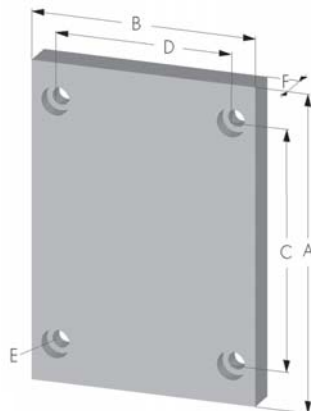
Carriage with carriage clam. Carriage length can be chosen as required. Depending on type of drive (spindle or belt) the position of clamp can be different. Dimensions by inquiry.



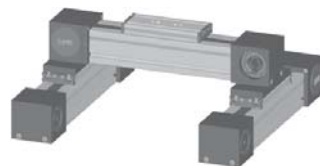
| Code-No. | Type |
|----------|--------|
| 00311 | EG 30 |
| 00312 | EG 40 |
| 00313 | EG 60 |
| 00314 | EG 80 |
| 00301 | EL 30 |
| 00302 | EL 40 |
| 00303 | EL 60 |
| 00304 | EL 80 |
| 00305 | EL 100 |
| 00306 | EL 125 |

Assembly plate

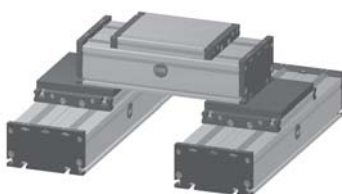
Assembly plate, anodized aluminium, enables various units to be assembled in a simple manner when combinations of linear units are to be used. Complete with screws and slide-nuts. Tapped holes can be made on request.



EL/EG



QL/QS



DL/DS

| Code-No. | Type | A | B | C | D | E for | F |
|----------|-----------|-----|-----|-----|-----|-------|----|
| 00940 | EG 40 | 100 | 70 | 86 | 52 | M 6 | 12 |
| 00960 | EG 60 | 144 | 100 | 126 | 80 | M 8 | 15 |
| 00980 | EG 80 | 170 | 140 | 152 | 110 | M10 | 15 |
| 00935 | EL 30 | 70 | 70 | 56 | 56 | M 6 | 10 |
| 00945 | EL 40 | 100 | 100 | 84 | 66 | M 6 | 12 |
| 00965 | EL 60 | 144 | 144 | 126 | 96 | M 8 | 15 |
| 00985 | EL 80 | 170 | 170 | 152 | 117 | M10 | 15 |
| 00984 | EL 80 S | 190 | 190 | 172 | 126 | M 8 | 15 |
| 00915 | EL 100 | 270 | 230 | 248 | 155 | M10 | 20 |
| 00925 | EL 125 | 335 | 295 | 285 | 200 | M12 | 20 |
| 00966 | DL120 | 140 | 120 | 122 | 96 | M 6 | 12 |
| 00986 | DL/DS 160 | 180 | 160 | 162 | 130 | M 8 | 15 |
| 00916 | DL/DS 200 | 240 | 200 | 218 | 168 | M 10 | 20 |
| 00967 | QL 60 | 140 | 60 | 122 | 36 | M 6 | 12 |
| 00987 | QL 80 | 180 | 80 | 162 | 50 | M 8 | 15 |
| 00917 | QL 100 | 240 | 100 | 218 | 66 | M10 | 20 |
| 00926 | QS 60 | 165 | 60 | 147 | 36 | M6 | 12 |
| 00928 | QS 80 | 216 | 80 | 198 | 50 | M8 | 15 |
| 00911 | QS 100 | 248 | 100 | 226 | 66 | M10 | 20 |

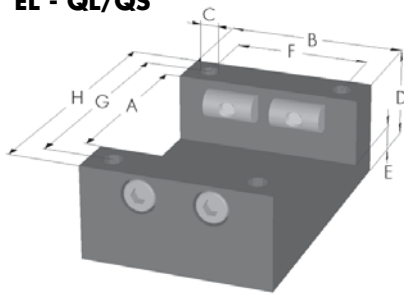


Accessories

Mounting systems

Support and mounting block

EL - QL/QS



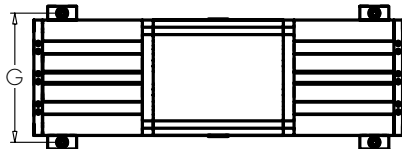
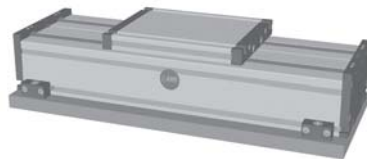
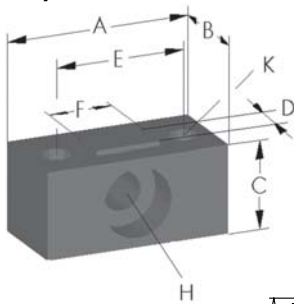
EG



The blocks can be retrofitted by half-round nuts (EL) or thread holes (EG). Black anodized aluminium, for mounting and for supporting long units. These components can be ready mounted on the units by us to customer's specification. Mounting can be clear or tapped holes and slide-nuts.

| Code-No. | Type | A | B | C | D | E | F | G | H |
|----------|----------------------|-----|-----|------|------|----|--------|-----|-----|
| 03030 | EL 30 | 30 | 30 | 4,2 | 18,0 | 6 | 1 hole | 38 | 45 |
| 03040 | EL 40 | 40 | 40 | 6,5 | 24,0 | 9 | | 50 | 60 |
| 03043 | EG 40 | 40 | 40 | 6,5 | 24,0 | 9 | | 50 | 60 |
| 03060 | EL 60 QL/QS 60 | 60 | 60 | 9,0 | 35,0 | 11 | | 75 | 90 |
| 03063 | EG 60 | 60 | 60 | 9,0 | 35,0 | 11 | | 75 | 90 |
| 03080 | EL 80(S) QL/QS 80 | 80 | 80 | 10,5 | 39,0 | 11 | 60 | 100 | 120 |
| 03083 | EG 80 | 80 | 80 | 10,5 | 39,0 | 11 | 60 | 100 | 120 |
| 03010 | EL/QL/QS-100 | 100 | 100 | 8,5 | 55,0 | 15 | 70 | 120 | 140 |
| 03020 | EL125 | 125 | 125 | 11 | 67,5 | 20 | 85 | 150 | 170 |

DL/DS

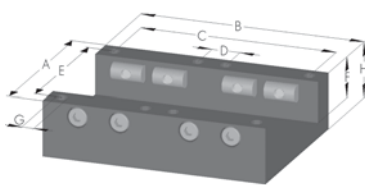


| Code-No. | Type | A | B | C | D | E | F | G | H for | K for |
|----------|-----------|----|----|----|----|----|----|-----|-------|-------|
| 03001 | DL 120 | 34 | 17 | 14 | 6 | 22 | 10 | 134 | M6 | M5 |
| 03002 | DL/DS 160 | 40 | 20 | 19 | 8 | 28 | 14 | 179 | M8 | M6 |
| 03003 | DL/DS 200 | 50 | 30 | 24 | 10 | 34 | 18 | 224 | M10 | M8 |

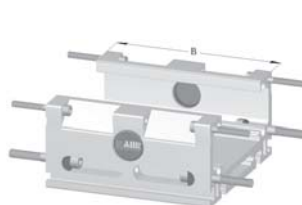
Jointing block EL / QL - DL / DS

Anodized aluminium. For joining body profiles longer than standard.

EL - QL / QS



DL / DS



| Code-No. | Type | A | B | C | D | E | F | G | H |
|----------|---------------------|-----|-----|-----|--------|-----|------|------|------|
| 03031 | EL 30 | 48 | 60 | 30 | 1 hole | 38 | 11,5 | 4,2 | 17,5 |
| 03041 | EL 40 | 60 | 80 | 40 | | 50 | 15 | 6,5 | 24 |
| 03061 | EL 60 QL/QS 60 | 90 | 120 | 60 | | 75 | 24 | 8,5 | 35 |
| 03081 | EL 80 QL/QS 80 | 120 | 160 | 140 | 20 | 100 | 29 | 10,5 | 40 |
| 03011 | EL 100 QL/QS 100 | 140 | 200 | 170 | 30 | 120 | 40 | 8,5 | 55 |
| 03021 | EL125 | 170 | 250 | 210 | 40 | 150 | 47,5 | 11 | 67,5 |
| 03090 | DL120 | - | 120 | - | - | - | - | - | - |
| 03091 | DL/DS 160 | - | 160 | - | - | - | - | - | - |
| 03092 | DL/DS 200 | - | 200 | - | - | - | - | - | - |

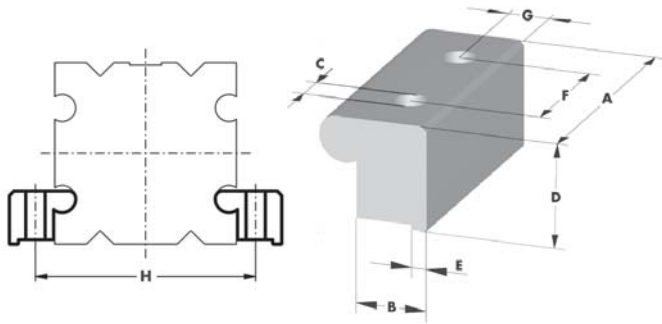
2.2

Accessories

Mounting systems

Mounting profile EL / Q

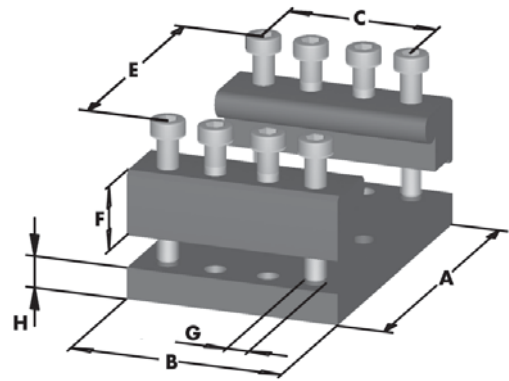
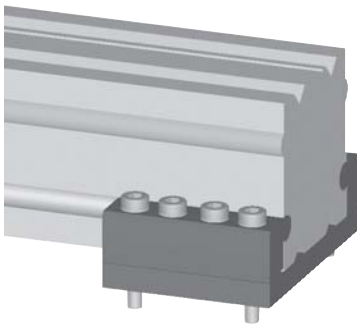
Black anodized aluminium, for mounting.
Mounting can be clear or tapped holes. Pair (without screws)



| Code-Nr. | Type | A | B | C | D | E | F | G | H |
|----------|----------|-----|------|------|------|---|----|------|-----|
| 03019 | EL/Q 100 | 80 | 21,5 | 10,5 | 30,5 | 4 | 40 | 12 | 120 |
| 03029 | EL 125 | 100 | 27 | 13 | 40 | 6 | 50 | 15,5 | 149 |
| 03039 | EL 30 | 24 | 11,5 | 5,5 | 10 | 3 | 12 | 6,5 | 41 |
| 03049 | EL 40 | 32 | 15,5 | 6,5 | 13 | 4 | 16 | 9 | 54 |
| 03069 | EL/Q 60 | 48 | 17,5 | 8,5 | 18 | 4 | 24 | 9,5 | 77 |
| 03089 | EL/Q 80 | 64 | 19,5 | 8,5 | 23,5 | 4 | 32 | 11,5 | 97 |

Mounting profile EL/Q

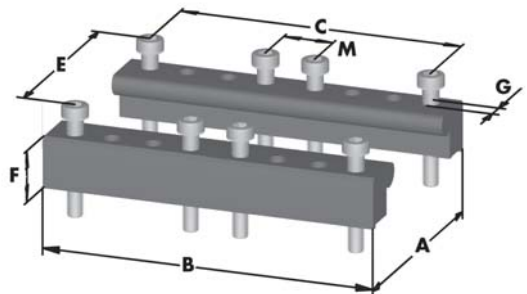
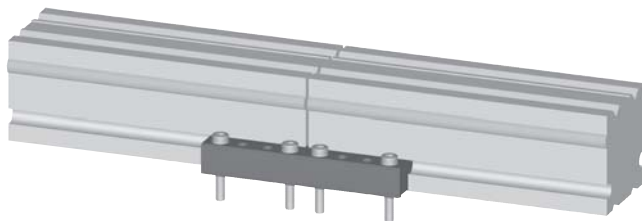
Black anodized aluminium, for mounting and for supporting long units. These components can be ready mounted on the units by us to customer's specification. Mounting can be clear or tapped holes and slide-nuts.



| Code-No. | Type | A | B | C | E | F | G | H |
|----------|---------------|-----|-----|----|-----|------|------|------|
| 030301 | EL 30 | 54 | 30 | 20 | 38 | 10 | 4,2 | 6 |
| 030401 | EL 40 | 72 | 40 | 26 | 50 | 13 | 6,4 | 9 |
| 030601 | EL/Q 60 | 96 | 60 | 40 | 75 | 18 | 8,5 | 10,8 |
| 030801 | EL 80/80S/Q80 | 120 | 80 | 60 | 100 | 23,5 | 10,5 | 10,8 |
| 030101 | EL/Q 100 | 144 | 100 | 70 | 120 | 30,5 | 10,5 | 14,8 |
| 030201 | EL 125 | 180 | 125 | 85 | 150 | 40 | 11 | 20 |

Jointing profile EL/Q

Black anodized aluminium. For joining body profiles longer than standard.



| Code-No. | Type | A | B | C | E | F | G | M |
|----------|---------------|-----|-----|-----|-----|------|------|----|
| 030312 | EL 30 | 54 | 60 | 50 | 38 | 10 | 4,2 | 10 |
| 030412 | EL 40 | 72 | 80 | 66 | 50 | 13 | 6,4 | 14 |
| 030612 | EL/Q 60 | 96 | 120 | 100 | 75 | 18 | 8,5 | 20 |
| 030812 | EL 80/80S/Q80 | 120 | 160 | 140 | 100 | 23,5 | 10,5 | 20 |
| 030112 | EL/Q 100 | 144 | 200 | 170 | 120 | 30,5 | 10,5 | 30 |
| 030212 | EL 125 | 180 | 250 | 210 | 150 | 40 | 11 | 40 |

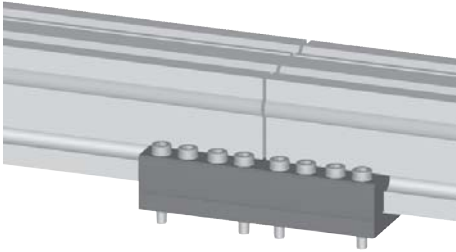


2.2

Accessories

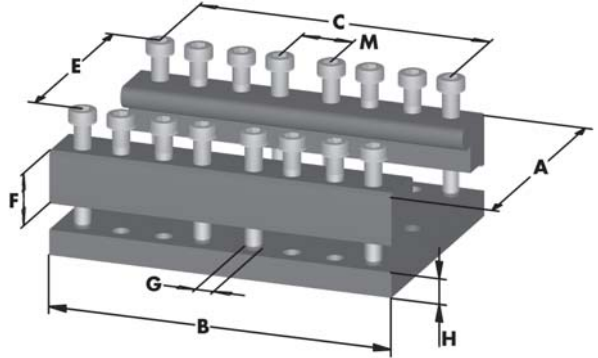
Mounting systems

Jointing profile EL/Q



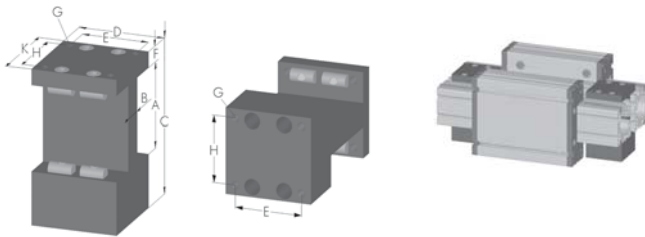
Black anodized aluminium, for jointing and mounting supporting long units. These components can be ready mounted on the units by us to customer's specification. Mounting can be clear or tapped holes and slide-nuts.

| Code-No. | Type | A | B | C | E | F | G | H | M |
|----------|-------------|-----|-----|-----|-----|------|------|------|----|
| 030311 | EL 30 | 54 | 60 | 50 | 38 | 10 | 4,2 | 6 | 10 |
| 030411 | EL 40 | 72 | 80 | 66 | 50 | 13 | 6,4 | 9 | 14 |
| 030611 | EL/Q 60 | 96 | 120 | 100 | 75 | 18 | 8,5 | 10,8 | 20 |
| 030811 | EL/Q 80/80S | 120 | 160 | 140 | 100 | 23,5 | 10,5 | 10,8 | 20 |
| 030111 | EL/Q 100 | 144 | 200 | 170 | 120 | 30,5 | 10,5 | 14,8 | 30 |
| 030211 | EL 125 | 180 | 250 | 210 | 150 | 40 | 11 | 20 | 40 |



Parallel mounting block EL

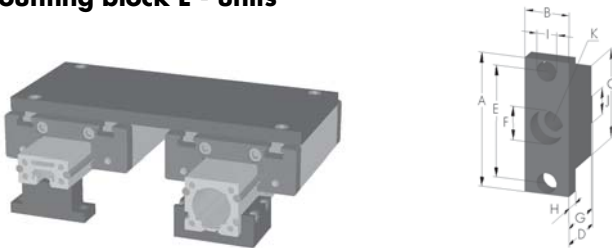
Black anodized aluminium. For parallel mounting of two units.



| Code-No. | Type | A | B | C | D | E | F | G | H | K |
|----------|------|-----|----|-----|-----|-----|------|-----|-----|-----|
| 03042 | 40 | 40 | 18 | 85 | 58 | 50 | 10 | M 6 | 50 | 58 |
| 03062 | 60 | 60 | 22 | 123 | 70 | 54 | 15 | M 8 | 54 | 70 |
| 03082 | 80 | 80 | 22 | 145 | 80 | 62 | 15 | M 8 | 62 | 80 |
| 03084 | 80S | 80 | 22 | 155 | 80 | 62 | 15 | M 8 | 62 | 80 |
| 03012 | 100 | 100 | 30 | 200 | 110 | 90 | 20 | M10 | 90 | 110 |
| 03022 | 125 | 125 | 40 | 253 | 135 | 115 | 22,5 | M12 | 115 | 135 |

Mounting block E - units

Black anodized aluminium. Support and mounting block for E40, 60, 80. By using this mounting block you will reach the same level of heights as EL-units with support. Assembling by through holes (frame) and slide-nuts (unit).

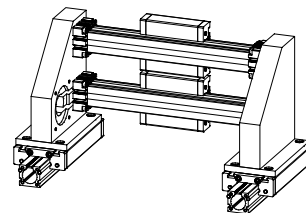
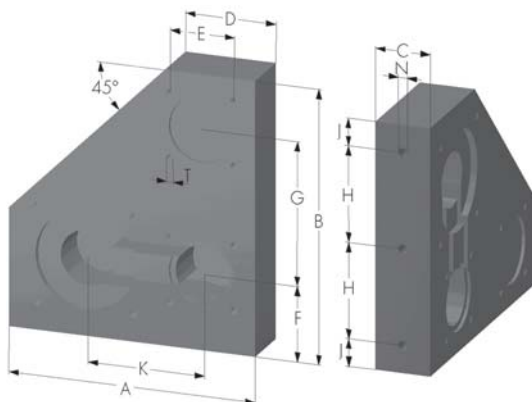


| Code-No. | Type | A | B | C | D | E | ØF | G | H | ØI | J | ØK |
|----------|------|-----|----|----|------|-----|----|------|----|------|----|----|
| 03048 | E 40 | 60 | 20 | 40 | 28 | 50 | 15 | 27 | 8 | 6,6 | 12 | 9 |
| 03068 | E 60 | 90 | 25 | 59 | 41,7 | 75 | 15 | 40,7 | 10 | 9 | 12 | 9 |
| 03088 | E 80 | 120 | 30 | | 51,8 | 100 | 15 | 50,8 | 15 | 10,5 | 12 | 9 |



Double mounting block with motor housing

Black anodized aluminium, including pulleys and belt for the drive. Ratio 1:1



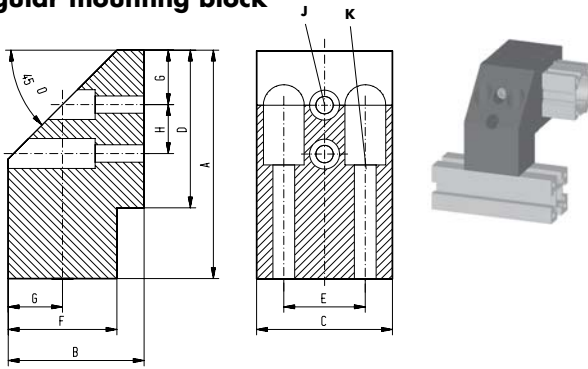
| Code-No. | Type | A | B | C | D | E | F | G | H | J | K | N | T |
|----------|------|-----|-----|----|----|--------|----|-----|------|----|-----|----|----|
| 03050 | 40 | 180 | 200 | 40 | 66 | □ 47 | 55 | 105 | 70 | 20 | 85 | M8 | M6 |
| 03051 | 60 | 205 | 304 | 50 | 74 | □ 68,6 | 80 | 164 | 87,5 | 15 | 125 | M8 | M8 |

Accessories

Mounting systems

Angular mounting block

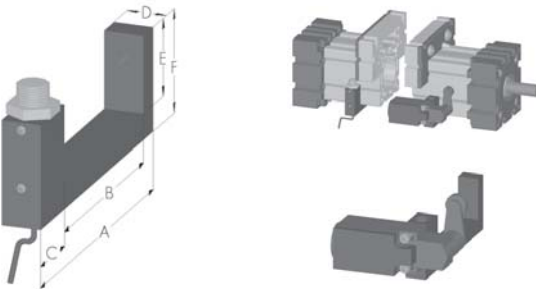
Black anodized aluminium.



| Code-No. | Type | A | B | C | D | E | F | G | H | J ∅ | K ∅ |
|----------|------|-----|----|----|----|----|----|----|----|--------|--------|
| 03055 | 40 | 84 | 50 | 50 | 58 | 30 | 40 | 20 | 18 | 6,4 | 8,4 |
| 03056 | 60 | 117 | 50 | 59 | 80 | 36 | 40 | 20 | 30 | 9 | 9 |

Proximity / limit switch holder EG

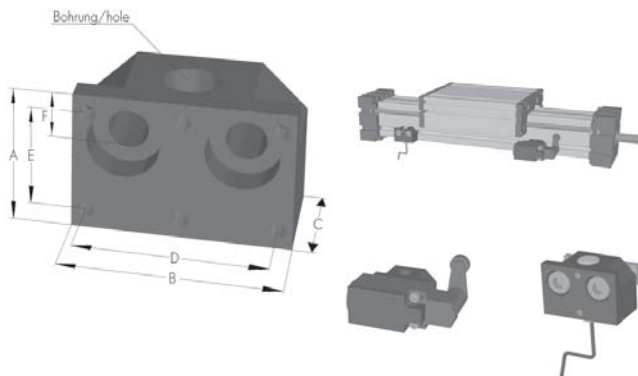
Black anodized aluminium bracket, fixed by grub screws. Position along the length of the units is adjustable. Fixing holes for proximity and limit switches are provided.



| Code-Nr. | Type | A | B | C | D | E | F | Drill hole |
|----------|-------|-----|----|----|----|----|----|------------|
| 01340 | EG 40 | 72 | 40 | 24 | 15 | 19 | 28 | 8,2 |
| 01360 | EG 60 | 92 | 60 | 24 | 15 | 26 | 35 | 12,2 |
| 01380 | EG 80 | 114 | 81 | 24 | 15 | 30 | 40 | 12,2 |

Proximity / limit switch holder EL

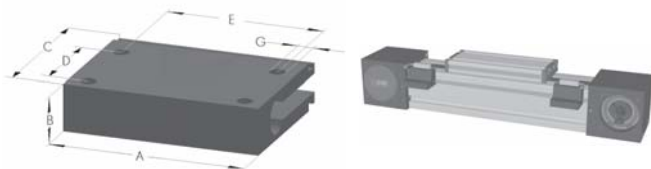
Black anodized aluminium bracket, fixed by screws into slide-nuts in the body T-slots, hence position axially adjustable. Fixing holes for proximity and limit switches are provided. Complete with screws and sliding nuts.



| Code-No. | Type | A | B | C | D | E | F | Drill hole |
|----------|----------|-----------------|----|-------------|----|----|------|------------|
| 01331 | EL 30 | 12 | 30 | 12 | - | - | 6 | 8,2 |
| 01341 | EL 40 | 28 | 32 | 25 | 26 | 22 | 8 | 8,2 |
| 01361 | EL 60 | 30 | 40 | 25 | 32 | 22 | 11 | 12,2 |
| 01381 | EL 80 | 30 | 45 | 25 | 39 | 22 | 10 | 12,2 |
| 01311 | EL 100 | 40 | 55 | 20 | 49 | 22 | 12 | 12,2 |
| 01321 | EL 125 | 45 | 60 | 25 | 52 | 22 | 12,5 | 12,2 |
| 01300 | EL60-125 | Reducing sleeve | | ∅ 12 to ∅ 8 | | | | |

Proximity / limit switch holder DL / DS - QL / QS

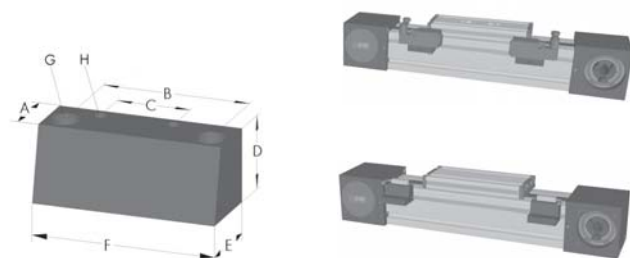
Black anodized aluminium bracket, fixed by screws into sliding nuts in the body T-slots, hence position self-centering and axially adjustable. Fixing holes for proximity and limit switches are provided.



| Code-No. | Type | A | B | C | D | E | G |
|----------|----------------|----|----|----|----|----|----|
| 01320 | DL/DS QL/QS | 50 | 12 | 38 | 22 | 40 | M4 |

Mounting block for proximity switch DL / DS - QL / QS

Black anodized aluminium bracket. Mounting by fillister head screws with connection element code No. 01362. Fixing holes for proximity switches are provided.



| Code-No. | Type | A | B | C | D | E | F | G for | H for |
|----------|----------------|------|----|----|----|----|----|-------|-------|
| 01324 | DL/DS QL/QS | 15,5 | 40 | 20 | 20 | 20 | 50 | M4 | M3 |

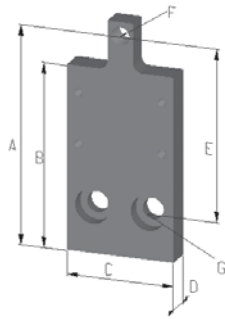


2.2

Accessories

Switches

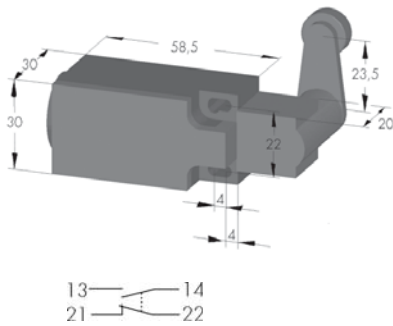
Switch mounting plate



Black anodized aluminium bracket, fixed by screws into sliding nuts in the body T-slots, hence position self-centering and axially adjustable. Fixing holes for proximity and limit switches are provided.

| Code-No. | Type | A | B | C | D | E | F | G for |
|----------|-----------|-----|-----|----|----|----|------|-------|
| 01320-3 | DL 120 | 70 | 59 | 50 | 12 | 56 | M8x1 | M 6 |
| 01320-33 | QL/QS 60 | | | | | 61 | | M 5 |
| 01320-2 | DL/DS 160 | 94 | 79 | 50 | 12 | 75 | M8x1 | M 8 |
| 01320-22 | QL/QS 80 | | | | | 84 | | M 8 |
| 01320-1 | DL/DS 200 | 115 | 101 | 50 | 12 | 77 | M8x1 | M 8 |
| 01320-11 | QL/QS 100 | | | | | 78 | | M 8 |

Limit switch



Fully insulated thermoplastic switch with adjustable operation lever. The operation device can be turned by 90°, the lever can be turned to engage by 360°.

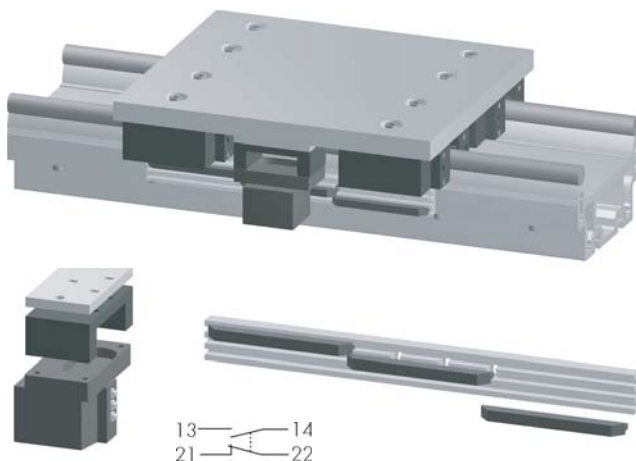
| | |
|--------------------------|---------------------|
| Max. voltage | 380 V |
| Max. constant current | 6 A |
| Max. current at make | 16 A |
| Duty classification | max.6000/h |
| Mechanical lifetime | 1 x 10 ⁷ |
| Operating repeatability | ± 0,01 |
| Transit time/snap switch | ca. 10 ms |
| Protection class | IP 65 (DIN 40050) |
| Working temperature | -30° C to +80° C |

| Code-No. | choice |
|----------|------------------|
| 01101 | standard |
| 01102 | PG13,5 connector |
| 01101ex | Version ATEX |

Limit switch



2.2



3 electromechanical switches in a row.

| | |
|--------------------------|-------------------|
| Nominal voltage | 250 V |
| Cont. current | 6 A |
| Switch rate | max.300/min. |
| Mech. Lifetime | >30 Mio. |
| Repeatability | ± 0,01 mm |
| Transit time/snap switch | ca. 10 ms |
| Protection class | IP 67 (DIN 60529) |
| Working temperature | -5° C bis +80° C |

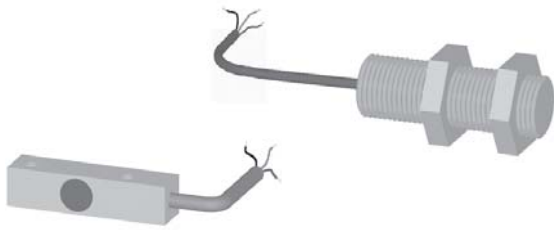
| Code-No. | choice |
|----------|-----------------|
| 01105 | switch system * |

* consisting of 2 cam ledges and 3 cams

Accessories

Switches

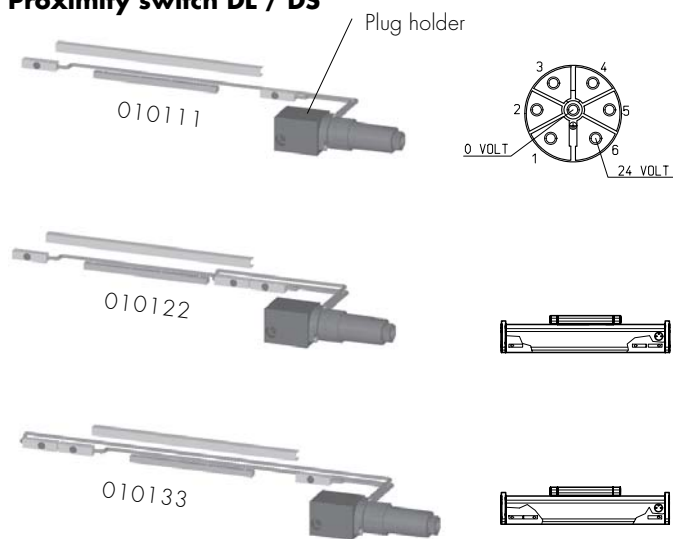
Proximity switch



Inductive proximity switch

| Code-No. | Type | Switch distance | Voltage | Output-current | Switching-function | Protection class |
|----------|------------|-----------------|-----------|----------------|--------------------|------------------|
| 01003 | 30, 40 M8 | 1 mm | 10 - 30 V | 200 mA | PNP brake contact | IP 67 |
| 01004 | 30, 40 M8 | 1 mm | 10 - 30 V | 200 mA | PNP make contact | IP 67 |
| 01001 | 60-125 M12 | 2 mm | 10 - 30 V | 200 mA | PNP brake contact | IP 67 |
| 01002 | 60-125 M12 | 2 mm | 10 - 30 V | 200 mA | PNP make contact | IP 67 |
| 010014 | Q 8x8 | 2 mm | 10 - 30 V | 200 mA | PNP brake contact | IP 67 |
| 010013 | Q 8x8 | 2 mm | 10 - 30 V | 200 mA | PNP make contact | IP 67 |

Proximity switch DL / DS

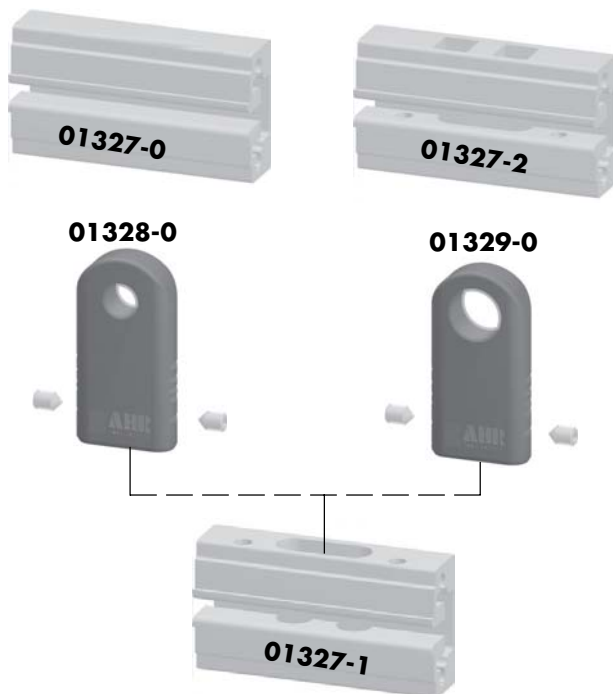


Inductive proximity switch, integrated in guide body profile DL. In standard version, limit switches are designed as break contacts, and reference switches are designed as make contacts

| Code-No. | Type |
|----------|---|
| 010111 | 2 integrated inductive proximity switches as limit switch |
| 010122 | 2 integrated inductive proximity switches as limit switch, 1 reference switch right |
| 010133 | 2 integrated inductive proximity switches as limit switch, 1 reference switch left |
| 01322 | Plug holder right |
| 01323 | Plug holder left |

Technical data for plug:
Working temperature -40° / +90°
Protection class IP65
inflammability UL-standard 94VO

Proximity / limit switch holder DL / DS / QL / QS



Proximity / limit switch holder for guide body profile DL./DS./QL./QS

| Code-Nr. | Type |
|----------|--|
| 01327-0 | Base holder for a limit switch |
| 01327-1 | Base holder for a proximity and a limit switch |
| 01327-2 | Base holder for a rectangular proximity and a limit switch |
| 01328-0 | plug in holder for a proximity switch M8x1 |
| 01329-0 | plug in holder for a proximity switch M12x1 |

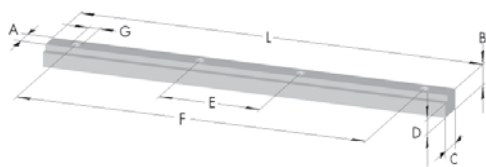
* Edelstahlgewindestifte



Accessories

Switches

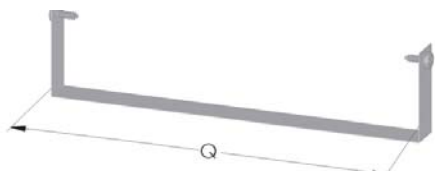
Activating strip DL / DS



For internal proximity switches.

| Code-No. | Type | A | B | C | D | E | F | G | L |
|----------|------------|-----|-----|---|-----|----|-----|-----|-----|
| 04870 | DL 120 | 2,9 | 8,5 | 7 | 5,9 | 46 | 99 | 3,5 | 120 |
| 04871 | DL/DS 160 | 6 | 6 | 8 | 4,3 | 30 | 104 | 3,5 | 120 |
| 04872 | DL /DS 200 | | | | | | | | |

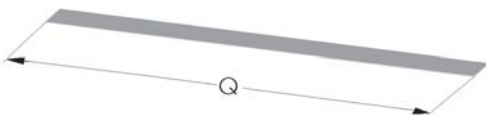
Activating sheet EL / EG



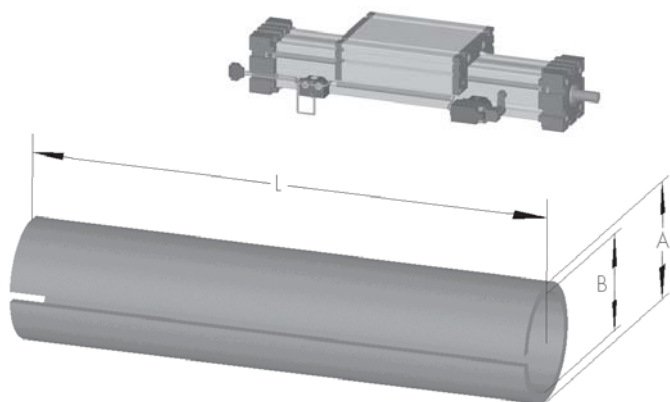
For external mounting proximity switches.

| Code-No. | Type | Q |
|----------|-----------|-----------------|
| 01000 | EL 30 | Carriage length |
| 01005 | EL 40 | Carriage length |
| 01006 | EL 60 | Carriage length |
| 01007 | EL 80 | Carriage length |
| 01010 | EL 80S | Carriage length |
| 01008 | EL 100 | Carriage length |
| 01009 | EL 125 | Carriage length |
| 01018 | DL 120 | Carriage length |
| 01017 | DL/DS 160 | Carriage length |
| 01016 | DL/DS 200 | Carriage length |
| 01030 | QL/QS 60 | Carriage length |
| 01031 | QL/QS 80 | Carriage length |
| 01032 | QL/QS 100 | Carriage length |

Activating sheet QL / QS - DL / DS



Cable conduit EL / QS



Slotted plastic tube for cabling directly onto body of linear unit. The tube can simply be pressed into the semicircular groove in the body and will be securely retained there.

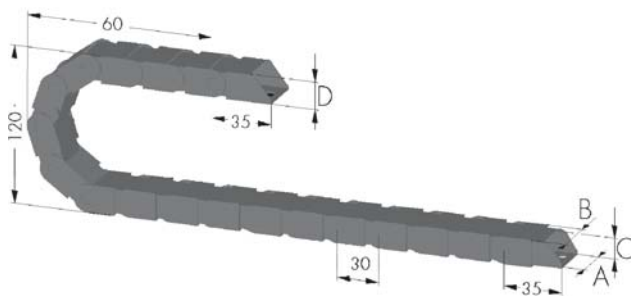
| Code-No. | Type | A | B | L |
|----------|----------------|----|-----|----------|
| 02806 | EL 40 | 6 | 4 | max. 50m |
| 02810 | EL 60 / Q 60 | 10 | 7,5 | max. 50m |
| 02812 | EL 80(S) / Q80 | 12 | 8,5 | max. 50m |
| 02816 | EL 100 / Q 100 | 16 | 12 | max. 50m |
| 02820 | EL 125 | 20 | 15 | max. 50m |

| | |
|-------|------|
| 02816 | 1000 |
|-------|------|

Sample ordering code:
Plastic tube for EL 100, 1000 mm long.



Cable chain



Black plastic, one floating and one fixed galvanized mounting bracket. The inner face opens like a zip, enabling cable to be inserted easily.

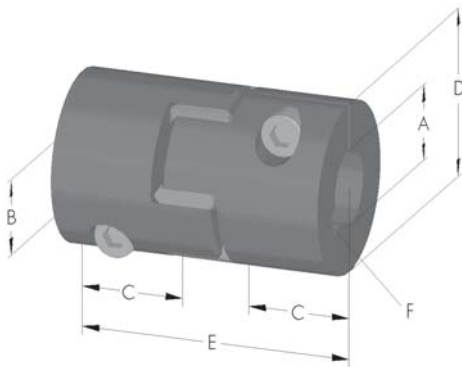
| Code-No. | Type | Name | A | B | C | D |
|----------|------|----------------------------|------|----|----|----|
| 02115 | 15 | Cable chain | 25,5 | 15 | 18 | 23 |
| 02125 | 25 | Cable chain | 35,5 | 25 | 18 | 23 |
| 02138 | 38 | Cable chain | 48 | 38 | 18 | 23 |
| 02150 | 50 | Cable chain | 60 | 50 | 18 | 23 |
| 02116 | 15 | fixing brackets (2 pieces) | | | | |
| 02126 | 25 | fixing brackets (2 pieces) | | | | |
| 02139 | 38 | fixing brackets (2 pieces) | | | | |
| 02151 | 50 | fixing brackets (2 pieces) | | | | |

Accessories

Coupling

Coupling

Torsionally elastic coupling with keyway and clamp. Light pre-load provides backlash-free torque transmission.



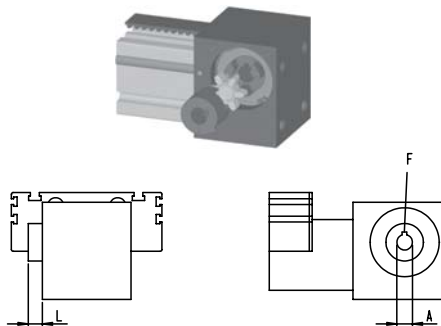
| Code-No. | Type | ØA/B (min/max) | C | D | E | F | Torque |
|----------|------|-----------------|----|----|-----|---------|--------|
| 01400- | 7 | 3 / 7 | 7 | 14 | 22 | DIN-key | 2 Nm |
| 01401- | 9 | 5 / 12 | 10 | 20 | 30 | | 6 Nm |
| 01410- | 14 | 5 / 16 | 11 | 30 | 35 | | 12 Nm |
| 01420- | 19 | 6 / 22 | 25 | 40 | 66 | | 17 Nm |
| 01430- | 24 | 10 / 28 | 30 | 55 | 78 | | 60 Nm |
| 01440- | 28 | 18 / 38 | 35 | 65 | 90 | | 160 Nm |
| 01450- | 38 | 30 / 45 | 45 | 80 | 114 | | 325 Nm |

01401- 08 10

Sample ordering code:
Coupling type 9, ØA = 8 mm, ØB = 10 mm

Coupling for toothed belt units

Torsionally elastic coupling with keyway and clamp. Light pre-load provides backlash-free torque transmission.



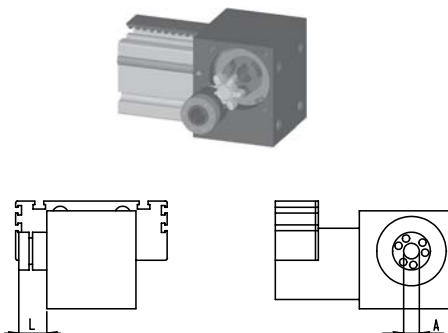
| Code-No. | Type | Ø A (min/max) | L | Size | F | Torque |
|----------|------|---------------|----|---------------------------------------|---------|--------|
| 03400- | 7 | 3 / 7 | 7 | EL 30 | DIN-key | 2 Nm |
| 03401- | 9 | 5 / 12 | 10 | EL 40 | | 6 Nm |
| 03410- | 14 | 5 / 16 | 11 | EL 60 DL 120 QL/QS 60 | | 12 Nm |
| 03420- | 19 | 6 / 22 | 25 | EL 80 (S) DL/DS 160 QL/QS 80 | | 17 Nm |
| 03430- | 24 | 10 / 28 | 30 | EL 100 QL/QS 100 DL 200 | | 60 Nm |
| 03440- | 28 | 18 / 38 | 35 | EL 125 | | 160 Nm |

03410- 12

Sample ordering code:
Coupling type 14, ØA = 12 mm

Coupling with tension ring

Coupling, to be clamped by tension ring.



| Code-No. | Type | Ø A | L | Size | Torque |
|----------|------|-------------------|----|---------------------------------------|--------|
| 03501- | 14 | 5, 10, 14 | 19 | EL 60 DL 120 QL/QS 60 | 12 Nm |
| 03510- | 19 | 10, 14, 16, 19 | 25 | EL 80 (S) DL/DS 160 QL/QS 80 | 17 Nm |
| 03520- | 24 | 19, 20, 22, 24 | 30 | EL 100 QL/QS 100 DL 200 | 60 Nm |
| 03530- | 28 | 38 | 35 | EL 125 | 160 Nm |

03510- 16

Sample ordering code:
Coupling type 19, ØA = 16 mm

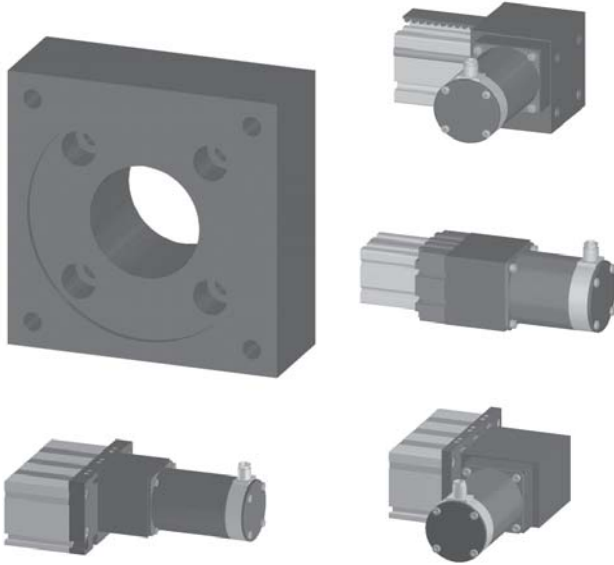


Accessories

**Adapter
Bellows**

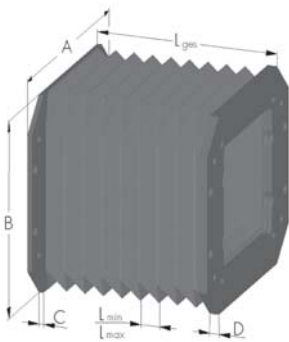
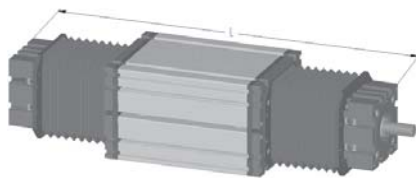
Motor adapter

Black anodized aluminium, can be constructed for any motor. Simple assembly, accurate alignment.



| Code-No. | Type |
|----------|--|
| 01531 | EL/EG 30 spindle |
| 01541 | EL/EG 40 spindle |
| 01561 | EL/EG 60 / DL 120 spindle |
| 01581 | EL/EG 80(S) / DL/DS 160 / QS 80 spindle |
| 01511 | EL 100 spindle |
| 01521 | EL 125 spindle |
| 01831 | EL 30 belt-drive |
| 01841 | EL 40 belt-drive |
| 01861 | EL 60 / DL 120 / QL/QS 60 belt-drive |
| 01881 | EL 80 / DL/DS 160 / QL/QS 80 belt-drive |
| 01811 | EL100 / QL/QS 100 / DL/DS 200 belt-drive |
| 01821 | EL125 belt-drive |

Complete bellows EL / EG



| Code-No. | Type | A | B | C | D | Fold | |
|----------|------------------------|-----|-----|---|----|------------------|------------------|
| | | | | | | L _{min} | L _{max} |
| 02940 | EL/EG 40 spindle | 73 | 69 | 5 | 10 | 3 | 15 |
| 02941 | EL/EG 40 belt drive | 73 | 75 | 5 | 10 | 3 | 15 |
| 02960 | EL/EG 60 spindle | 99 | 94 | 5 | 10 | 3 | 20 |
| 02961 | EL/EG 60 belt drive | 99 | 101 | 5 | 10 | 3 | 20 |
| 02980 | EL/EG 80(S) spindle | 130 | 124 | 5 | 10 | 3 | 25 |
| 02981 | EL/EG 80(S) belt drive | 130 | 138 | 5 | 10 | 3 | 25 |
| 02910 | EL 100 spindle | 165 | 155 | 5 | 10 | 3 | 30 |
| 02911 | EL 100 belt drive | 165 | 170 | 5 | 10 | 3 | 30 |

Bellow frame, zinc-plated plastic bellows with steel connection plates, max. 60° C.

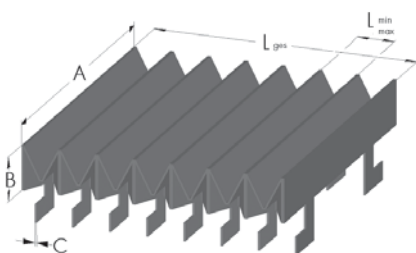
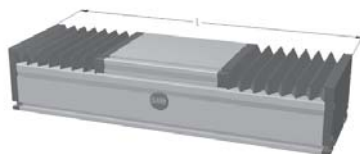
| | |
|-------|-----|
| 02980 | 500 |
|-------|-----|

Sample ordering code: Size 80 spindle, unit length L = 500 mm.

Bellow ERA7815, max. 120°, bellow frame PVC.



Complete bellows DL / DS



| Code-No. | Type | A | B | C | Fold | |
|----------|-----------|-----|----|---|------------------|------------------|
| | | | | | L _{min} | L _{max} |
| 02901 | DL 120 | 120 | 19 | 1 | 4 | 22 |
| 02902 | DL/DS160 | 160 | 24 | 1 | 4 | 31 |
| 02903 | DL/DS 200 | 200 | 28 | 1 | 4 | 28 |

| | |
|-------|-----|
| 02902 | 500 |
|-------|-----|

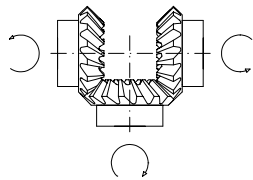
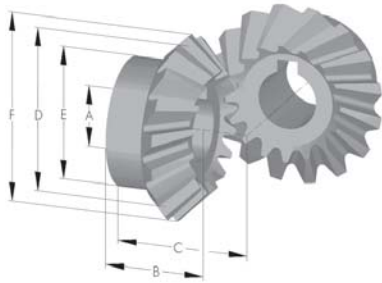
Sample ordering code: Size 160, unit length L = 500 mm.

2.2

Accessories

Angular gear box

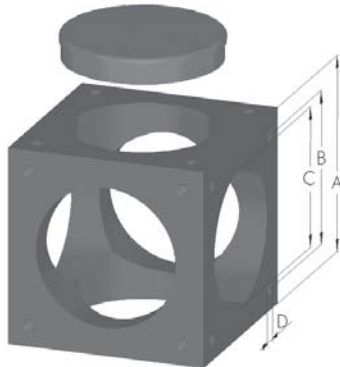
Bevel gear pair EL / EG



C 45 steel, helical gear, with keyway.

| Code-No. | Type | i | Modul | Number of teeth | A ₁₇ | B | C | D | E | F | max. rpm (min ⁻¹) |
|----------|------|-------|-------|-----------------|-----------------|------|----|----|----|------|-------------------------------|
| 00631 | 30 | 1:1 | 1 | 22 | 5 | 15 | 22 | 22 | 19 | 23,5 | 250 |
| 00641 | 40 | 1:1 | 2 | 16 | 10 | 13 | 28 | - | 22 | 35 | 560 |
| 00642 | 40 | 1:1,5 | 1,5 | 16 | 10 | 17 | 30 | 24 | 20 | 27 | 560 |
| | | | | 24 | | 17,5 | 27 | 36 | 26 | 38 | 840 |
| 00661 | 60 | 1:1 | 2,5 | 16 | 14 | 18,5 | 33 | - | 30 | 43 | 750 |
| 00662 | 60 | 1:1,5 | 2 | 16 | 14 | 21 | 38 | 32 | 26 | 36 | 560 |
| | | | | 24 | | 23 | 35 | 48 | 35 | 51 | 840 |
| 00681 | 80 | 1:1 | 3 | 16 | 18 | 23 | 40 | - | 35 | 51,5 | 750 |
| 00682 | 80 | 1:1,5 | 3 | 16 | 18 | 28 | 54 | 48 | 40 | 53 | 560 |
| | | | | 24 | | 30 | 49 | 72 | 50 | 76 | 840 |
| 00611 | 100 | 1:1 | 4 | 16 | 22 | 35,5 | 54 | - | 45 | 69,7 | 750 |
| 00612 | 100 | 1:1,5 | 3 | 16 | 22 | 27,7 | 50 | 48 | 34 | 53 | 560 |
| | | | | 24 | | 31 | 44 | 72 | 38 | 76 | 840 |

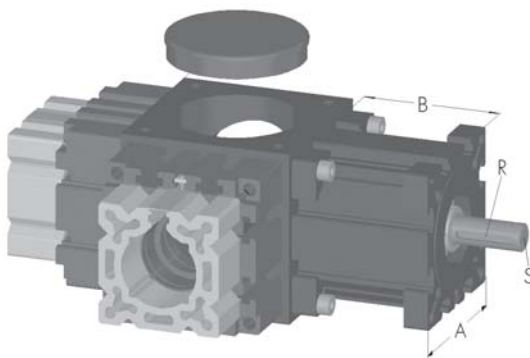
Combination cube EL / EG Cover caps



Black anodized aluminium. Used for connecting modules at right angles or in line.

| Combination cube | | | | | |
|------------------|------|---|-----|-----|-----|
| Code-No. | Type | A | B | C | D |
| 00830 | 30 | 52 | 35 | 40 | M 4 |
| 00840 | 40 | 66 | 47 | 48 | M 6 |
| 00860 | 60 | 92 | 69 | 62 | M 8 |
| 00880 | 80 | 112 | 88 | 80 | M 8 |
| 00810 | 100 | 148 | 112 | 110 | M10 |
| Cover caps | | | | | |
| 01830 | 30 | Black plastic. To cover empty cube sides. | | | |
| 01840 | 40 | | | | |
| 01860 | 60 | | | | |
| 01880 | 80 | | | | |
| 01810 | 100 | | | | |

Angular gear box EL / EG



Complete self-centering gear. Can easily be retrofitted to any EG or EL unit. Packed with grease for lubrication.

| Code No. | Type | i | m | A | B | R | S Ø x l | Torque | max. rpm (min ⁻¹) |
|----------|------|-------|-----|-----|-----|-----|------------|--------|-------------------------------|
| 00731 | 30 | 1:1 | 1 | 42 | 37 | 2x2 | 5x15 | 2 Nm | 250 |
| 00741 | 40 | 1:1 | 2 | 58 | 50 | 3x3 | 10x27 | 5 Nm | 560 |
| 00742 | 40 | 1:1,5 | 1,5 | 58 | 50 | 3x3 | 10x27 | 5 Nm | 560 |
| | | | | | | | | | 840 |
| 00761 | 60 | 1:1 | 2,5 | 82 | 70 | 5x5 | 14x35 | 15 Nm | 750 |
| 00762 | 60 | 1:1,5 | 2 | 82 | 70 | 5x5 | 14x35 | 15 Nm | 560 |
| | | | | | | | | | 840 |
| 00781 | 80 | 1:1 | 3 | 102 | 90 | 6x6 | 18x45 | 25 Nm | 750 |
| 00782 | 80 | 1:1,5 | 3 | 102 | 90 | 6x6 | 18x45 | 25 Nm | 560 |
| | | | | | | | | | 840 |
| 00711 | 100 | 1:1 | 4 | 130 | 110 | 6x6 | 22x45 | 30 Nm | 750 |
| 00712 | 100 | 1:1,5 | 3 | 130 | 110 | 6x6 | 22x45 | 30 Nm | 560 |
| | | | | | | | | | 840 |



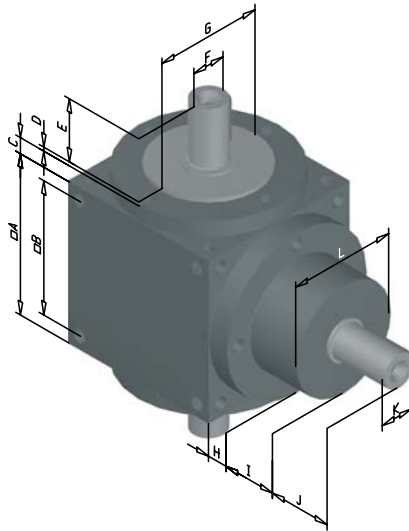
2.2



Accessories

**Angular gear box
Parallel transfer**

Bevel gear box E / D / Q - series



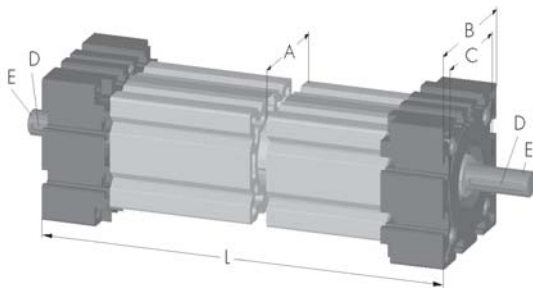
Application for driving two parallel spindle units, one side with hollow shaft for the spindle unit, one side with journal for splined shaft, two sides with journal for splined shaft and motor, max. 3000 rpm.

V065 = for Size E 40, 60 D 120, 160 Q 60, 80
 V090 = for Size E 60, 80(S) D 160, 200 Q 80, 100
 V120 = for Size E 80(S), 100, 125 D 160, 200 Q 80, 100

| Code-No. | Type | A | B | C | D | E | F | G | H | I | J | K | L | i |
|----------|-----------------|-----|-----|-----|---|----|------------------|------------------|-----|----|----|------------------|------------------|-----|
| 00783 | V065 - 1 Shaft | 65 | 45 | 9,5 | 2 | 28 | 12 _{h7} | 44 _{f7} | 9,5 | 30 | 28 | 12 _{h7} | 44 _{f7} | 1:1 |
| 00784 | V065 - 2 Shafts | | | | | | | | | | | | | 1:2 |
| 00785 | V090 - 1 Shaft | 90 | 70 | 10 | 2 | 38 | 18 _{h7} | 60 _{f7} | 10 | 30 | 37 | 18 _{h7} | 60 _{f7} | 1:1 |
| 00786 | V090 - 2 Shafts | | | | | | | | | | | | | 1:2 |
| 00787 | V120 - 1 Shaft | 120 | 100 | 12 | 3 | 47 | 25 _{h7} | 80 _{f7} | 15 | 40 | 47 | 25 _{h7} | 80 _{f7} | 1:1 |
| 00788 | V120 - 2 Shafts | | | | | | | | | | | | | 1:2 |

00784 Sample order code: Angular gear box size 60 with 2 journals

Transmission unit EL / EG



A shaft carried on ball bearings in an aluminium hollow section can be used to transmit torque or as a joining element for combining parallel linear units or as an individual element in angular operation.

| Code-No. | Type | A | B | C | D | E | L _{min} | L _{max} |
|----------|-----------------|-----|-----|----------|-------|---------|------------------|------------------|
| 01931 | 30 | 30 | 42 | 40 x 0,7 | 2 x 2 | 5 x 15 | 38 | 3.000 |
| 01932 | 30 no shaft | 30 | 42 | 40 x 0,7 | - | - | 38 | 3.000 |
| 01941 | 40 | 40 | 58 | 48 x 1 | 3 x 3 | 10 x 27 | 50 | 6.000 |
| 01942 | 40 no shaft | 40 | 58 | 48 x 1 | - | - | 50 | 6.000 |
| 01961 | 60 | 60 | 82 | 62 x 1 | 5 x 5 | 14 x 35 | 70 | 6.000 |
| 01962 | 60 no shaft | 60 | 82 | 62 x 1 | - | - | 70 | 6.000 |
| 01981 | 80 | 80 | 102 | 80 x 1 | 6 x 6 | 18 x 45 | 90 | 6.000 |
| 01982 | 80 no shaft | 80 | 102 | 80 x 1 | - | - | 90 | 6.000 |
| 01911 | 100 | 100 | 130 | 110 x 1 | 6 x 6 | 22 x 45 | 110 | 6.000 |
| 01912 | 100 no shaft | 100 | 130 | 110 x 1 | - | - | 110 | 6.000 |

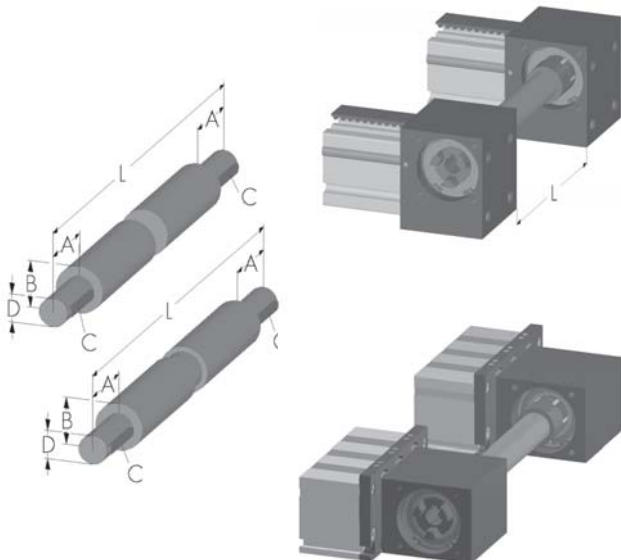
01941 0750

Sample order code:
Size 40, length L = 750 mm

Splined shaft EL / EG - DL / DS



2.2



Galvanized steel, for torque transfer between two parallel drives. Shafts longer than 1200 mm are hollow shafts with welded journals.

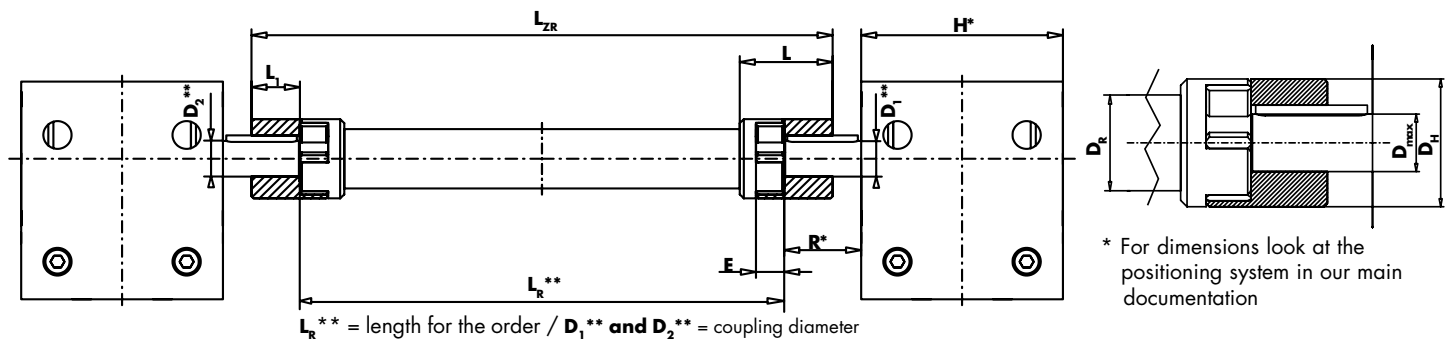
| Code-No. | Type | A | B | C | D | L _{max} |
|----------|----------------------------------|----|----|--------|------------------|------------------|
| 02230 | EL/EG 30 | 15 | 12 | 2x2x12 | 6 _{h7} | 1.500 |
| 02240 | EL/EG 40 | 27 | 20 | 3x3x25 | 10 _{h7} | 3.000 |
| 02260 | EL/EG 60 QL/QS 60 DL 120 | 35 | 24 | 5x5x28 | 14 _{h7} | 3.000 |
| 02280 | EL/EG 80 QL/QS 80 DL/DS160 | 45 | 30 | 6x6x40 | 18 _{h7} | 3.000 |
| 02210 | EL 100 QL/QS 100 DL/DS 200 | 55 | 40 | 6x6x50 | 22 _{h7} | 4.500 |
| 02220 | EL 125 | 55 | 50 | 8x7x50 | 30 _{h7} | 5.000 |

02240 0500

Sample order code:
Size 40, length L = 500 mm

Accessories

Synchronous transmission shaft Rotex® GS



| Code-No. | Type of unit | Type | with / without keyway | D _H | D _{max} | D _R | E | L _{ZRmin} | L _{ZRmax} | L | L ₁ | T _{Kmax} |
|----------|---|------|-----------------------|----------------|------------------|----------------|----|--------------------|--------------------|------|----------------|-------------------|
| 02282 | EL/EG 60 QL/QS 60-80 EL/EG 80 DL 120-160 DS 160 | 19 | with | 40 | 20 | 40 | 16 | 133 | 3.000 | 49,0 | 25 | 20 Nm |
| 02283 | EL/EG 60 QL/QS 60-80 EL/EG 80 DL 120-160 DS 160 | 19 | without | 40 | 20 | 40 | 16 | 133 | 3.000 | 49,0 | 25 | 20 Nm |
| 02211 | QL/QS 100 EL 100 DL/DS 200 | 24 | with | 55 | 28 | 50 | 18 | 157 | 3.500 | 59,0 | 30 | 60 Nm |
| 02212 | QL/QS 100 EL 100 DL/DS 200 | 24 | without | 55 | 28 | 50 | 18 | 157 | 3.500 | 59,0 | 30 | 60 Nm |
| 02222 | EL125 | 28 | with | 65 | 38 | 60 | 20 | 181 | 4.000 | 67,0 | 35 | 160 Nm |
| 02223 | EL125 | 28 | without | 65 | 38 | 60 | 20 | 181 | 4.000 | 67,0 | 35 | 160 Nm |

- Synchronous transmission shaft made of seamless drawn aluminium tube
- Use with lifting machines, in handling units, robotic palletisers etc.
- Easy, radial coupling assembly because of split coupling hub
- Exchange of spider without displacing the drive and driven side
- Standard lengths are possible up to 4 m without intermediate bearing depending on speed and size
- Positive and frictionally engaged torque transmission
- Low mass moment of inertia due to use of aluminium
- Can be combined with other hub forms (clamping or clamping ring hubs)
- Finish bore according to ISO fit H7, keyway according to DIN 6885 sheet 1 - JS9

Sample ordering code:

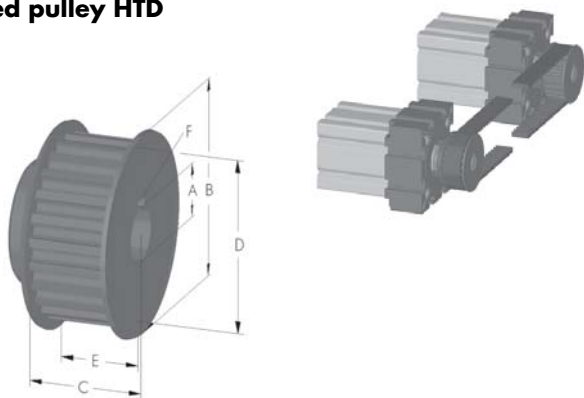
| Code-No. | L _R | D ₁ | D ₂ |
|----------|----------------|----------------|----------------|
| 02211 | 2000 | 22 | 22 |

Synchronous transmission shaft for EL/QL/QS 100 and DL/DS 200 with keyway, length 2000 mm, coupling diameter D₁=22 / D₂=22

Accessories

Belt Pulley Incremental encoder

Toothed pulley HTD



Material St 50, secured with key.

| Code-No. | Type | A | B | C | D | E | F | Number of teeth | Spacing |
|----------|----------------------|----|----|----|------|----|-----|-----------------|---------|
| 00450 | EL/EG 30 | 6 | 23 | 26 | 18,3 | 15 | 2x2 | 20 | 3x15 |
| 00451 | EL/EG 40 | 10 | 36 | 26 | 30,7 | 15 | 3x3 | 20 | 5x15 |
| 00452 | EL/EG 60 DL120 | 14 | 44 | 38 | 40,2 | 25 | 5x5 | 26 | 5x25 |
| 00453 | EL/EG 80 DL/DS160 | 18 | 54 | 38 | 49,8 | 25 | 6x6 | 32 | 5x25 |
| 00454 | EL100 | 22 | 66 | 48 | 61,1 | 38 | 6x6 | 24 | 8x30 |

Toothed belt endless HTD



| Code-No. | Type | Belt | Tensile force |
|----------|----------|------|---------------|
| 00550 | EL/EG 30 | 3M15 | 200 N |
| 00551 | EL/EG 40 | 5M15 | 390 N |
| 00556 | EL/EG 40 | 5M09 | 298 N |
| 00552 | EL/EG60 | 5M25 | 894 N |
| 00553 | EL/EG80 | 5M25 | 894 N |
| 00554 | EL100 | 8M30 | 1070 N |
| 00555 | EL100 | 8M20 | 980 N |

| | |
|-------|------|
| 00551 | 0700 |
|-------|------|

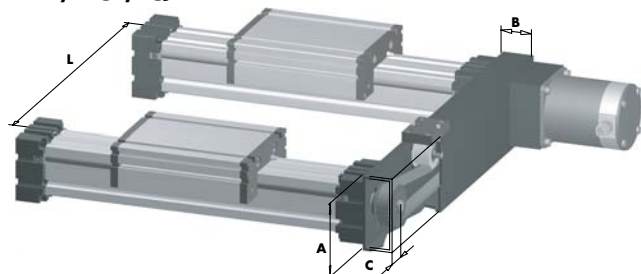
Sample order code:
Belt 5M15 perimeter: 700 mm

Parallel transfer unit for spindle drives

DL / DS



EL / EG / Q



Black anodized aluminium tube with plastic end caps, pulleys fixed with keys or tension rings. Spindle centers are multiples of 5 or 8 mm, according to belt pitch.

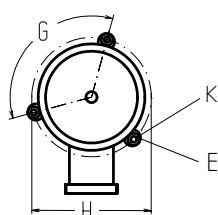
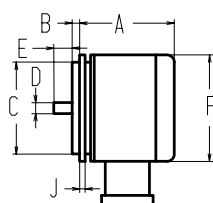
| Code-No. | Type | A | B | C | L _{max} | Belt |
|----------|------------|-----|----|----|------------------|-------|
| T13030 | EL/EG 30 | 50 | 25 | 25 | 1.200 | 5M-9 |
| T13040 | EL/EG 40 | 80 | 40 | 30 | 1.500 | 5M-15 |
| T13060 | EL/EG/Q 60 | 100 | 50 | 42 | 2.000 | 5M-25 |
| T13061 | DL 120 | 60 | 40 | | 2.000 | 5M-25 |
| T13080 | EL/EG/Q 80 | 120 | 50 | 52 | 2.000 | 5M25 |
| T13081 | DL/DS 160 | 80 | 50 | | 2.000 | 5M-25 |
| T13010 | EL/Q 100 | 160 | 80 | 66 | 3.000 | 8M-30 |
| T13020 | EL 125 | | | | | |

| | |
|--------|-----|
| T13060 | 500 |
|--------|-----|

Sample ordering code: Center-distance of axis L = 500 mm
For center-distances higher than 800mm you have to use an additional tensioning device code-number 04099.

2.2

Incremental encoder



Eccentric for assembly

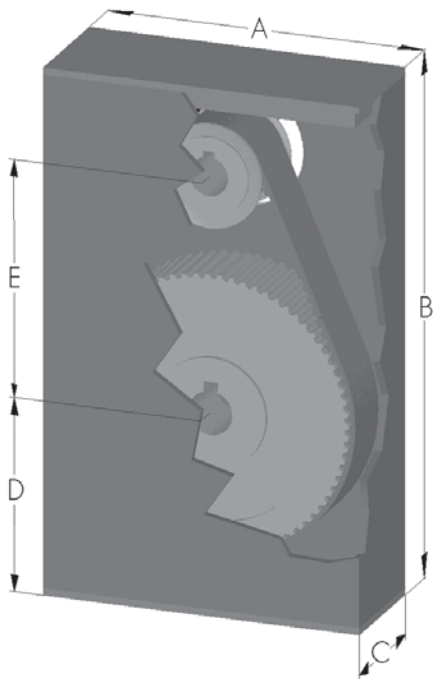
With flange and coupling, ready for assembly to any linear unit. 500 increments per revolution. Other resolutions on request.

| Code-No. | A | B | C | D | E | F | G | H | J | K for |
|----------|------|---|------------------|-----------------|----|------|------|----|---|-------|
| E 05500 | 57,5 | 4 | 50 _{h7} | 6 _{h9} | 10 | 58,5 | 120° | 65 | 3 | M3 |

Accessories

Toothed belt gear

Toothed belt gear



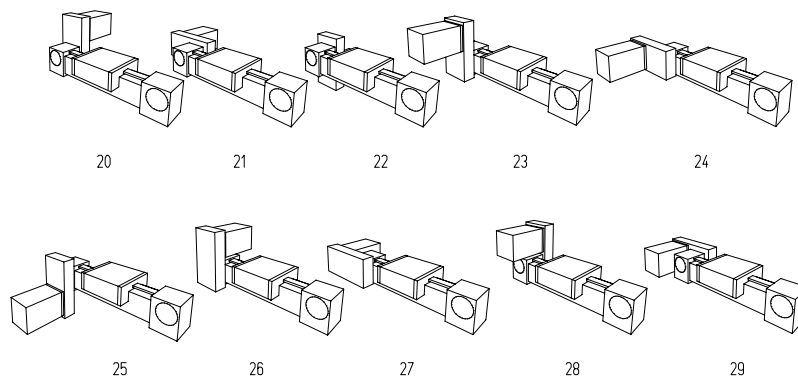
Rectangular aluminium tubular housing, ends covered with plastic end caps. Toothed pulley fitted to motor shaft with key or tension ring. Mounting can be adapted for any motor.

Dimensions in the table are examples. In general dimensions depend on motor-shaft, flange and ratio.

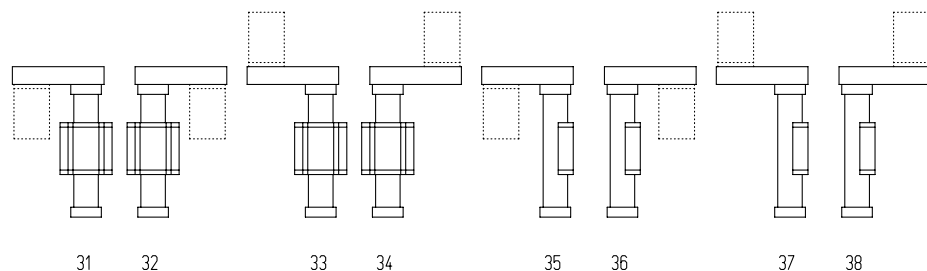
*depends on motor shaft diameter

| Code-No. | Type | A | B | C | D | E | Belt | Ratio * | Driving torque |
|----------|------|-----|-----|----|----|-----|-------|-------------------|----------------|
| T1-30- | 30 | 60 | 117 | 30 | 22 | 60 | 3M15 | 1:1 | max. 2 Nm |
| T1-40- | 40 | 100 | 190 | 40 | 55 | 87 | 5M-15 | 2:1 | max. 4 Nm |
| T1-60- | 60 | 100 | 190 | 50 | 55 | 87 | 5M25 | 2,4:1 | max. 8 Nm |
| T1-80- | 80 | 120 | 220 | 54 | 54 | 107 | 5M25 | 3:1 | max. 12 Nm |
| T1-10- | 100 | 180 | 340 | 60 | 80 | 163 | 8M30 | others on request | max. 20 Nm |
| T1-12- | 125 | | | | | | | | |

Motor mounting with belt reducing gear for belt driven units



Motor mounting with belt reducing gear for spindle drives



T1- 22 40- 2,4

Sample order code:
Size 40, for belt drive units, motor mounting 22, ratio 2,4:1.

Motor mounting

Ratio

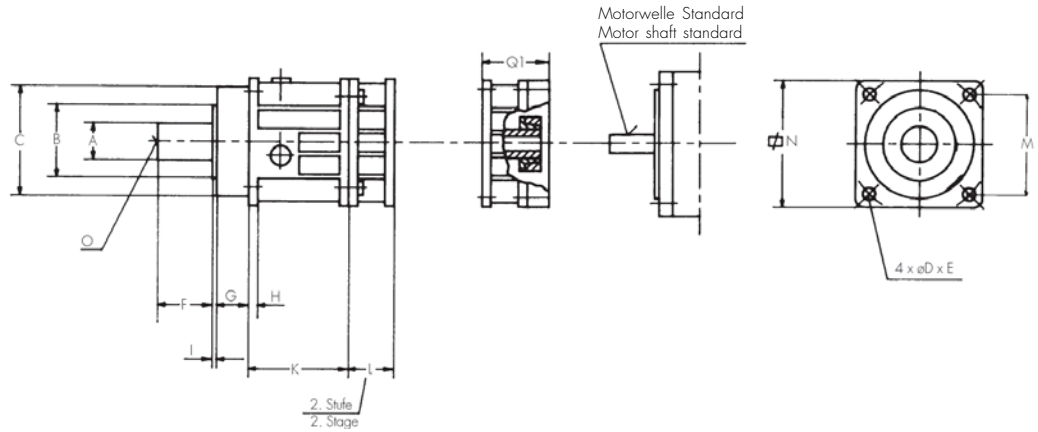


2.2

Accessories

Planetary gear box

Planetary gear box, single- or two-stage for servo motors



| Type | A _{1,6} *** | B | C _{g6} | D | E | F | G | H | I | K | L | M | N | O | Q ₁ ** |
|-------|----------------------|----|-----------------|-----|-----|----|----|----|---|------|----|----|-----|---------|---|
| PSF 2 | 16 | 35 | 60 | 5,5 | 68 | 28 | 18 | 6 | 2 | 49 | 24 | 48 | 61 | M5x12,5 | 57 (11x23) (14x30) (19x40) |
| PSF 3 | 22 | 36 | 70 | 6,6 | 85 | 36 | 18 | 7 | 2 | 59 | 25 | 60 | 76 | M8 x 19 | 57 (11x23) (14x30) (19x40) (24x50) |
| PSF 5 | 32 | 50 | 90 | 9 | 120 | 58 | 29 | 10 | 1 | 66,5 | 39 | 85 | 105 | M12 x28 | 53,5 (≤24x50) |

** = in brackets; motor shaft diameter x length
*** = drive shaft a x f standard without keyway

| Code-No. | Type | Driving torque | Moment of inertia about input in kgcm ² | | Forces on output shaft at n ₂ =300min ⁻¹ | | Input rpm | Weight |
|----------|---------|--------------------|--|------------|--|--------|------------------------|--------|
| | | T ₂ max | for i=5 | for i=9 | radial | axial | N ₁ max | |
| T10 11- | PSF 221 | 55 Nm | 0,461 (14) | 0,450 (14) | 1010 N | 1000 N | 6000 min ⁻¹ | 2,2 kg |
| T10 12- | PSF 321 | 110 Nm | 0,553 (14) | 0,482 (14) | 1175 N | 1100 N | 6000 min ⁻¹ | 3,3 kg |
| T10 13- | PSF 521 | 300 Nm | 2,485 (19) | 2,187 (19) | 6500 N | 2500 N | 4500 min ⁻¹ | 7,0 kg |
| T10 14- | PSF 222 | 55 Nm | 0,454 (14) | 0,437 (14) | 1700 N | 1700 N | 6000 min ⁻¹ | 2,6 kg |
| T10 15- | PSF 322 | 110 Nm | 0,474 (14) | 0,440 (14) | 1800 N | 1880 N | 6000 min ⁻¹ | 4,1 kg |
| T10 16- | PSF 522 | 300 Nm | 2,244 (19) | 2,043 (19) | 7180 N | 5400 N | 4500 min ⁻¹ | 8,0 kg |

() = Motor shaft diameter

Gear reduction:

Single stage: i= 3, 4, 5, 7, 10 (i=10, torque is reduced by 8%)
Two-stage: i= 16, 20, 25, 28, 35, 40, 49, 70, 100

Circumferential backlash:

α < 6 angular minutes } single-stage gear box
α < 3 angular minutes }
α < 10 angular minutes } two-stage gear box
α < 5 angular minutes }



2.2

04

- 1
- 2
- 3
- 4

T10- 1 11- 04

Sample order code:
Type PSF 221 i=4 α < 6 angular minutes

