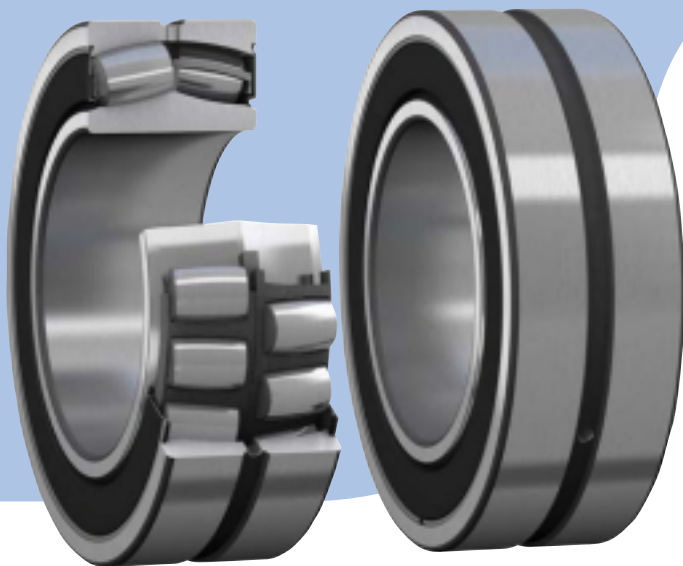


Why SKF?

Sealed SKF Explorer spherical roller bearings



By design, SKF spherical roller bearings can accommodate very heavy radial and heavy axial loads in applications prone to misalignment or shaft deflections.

Sealed spherical roller bearings have the same features and internal design as basic design spherical roller bearings, but are equipped with contact seals fitted in recesses in the outer ring.

The bearings are supplied lubricated with a high-performance SKF grease. For many application conditions, the bearings do not require relubrication and can be considered virtually maintenance-free.

The effective contact seals keep lubricant in and contaminants out of the bearing, to significantly increase service life in applications where there are high levels of contamination.

Upgraded SKF Explorer spherical roller bearings

All SKF Explorer spherical roller bearings have been upgraded to a new level of performance, featuring a combination of high-quality steel and an improved heat treatment. The result: improved performance under poor lubrication conditions resulting from slow speeds or high temperatures.

Product features

- Made of super-clean and tough upgraded steel
- Highly effective double-lip seals
- Can accommodate up to 0.5° of misalignment

Common applications

- Elevators, escalators
- Electric motors
- Mining and construction equipment
- Fluid machinery
- Marine industry machinery
- Food processing machinery
- Steel manufacturing equipment
- Conveyors
- Cranes

User benefits

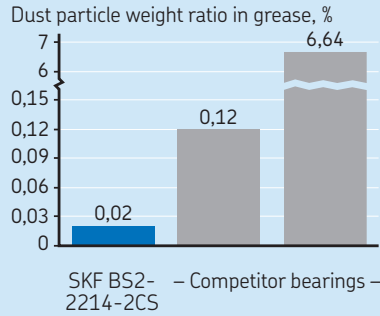
- Increased service life in contaminated environments
- Grease and seal simplify assembly
- Minimum lubricant consumption
- Reduced maintenance and operating costs
- Reduced noise and vibration levels
- Space saving
- Reduced environmental impact

Proven seal performance

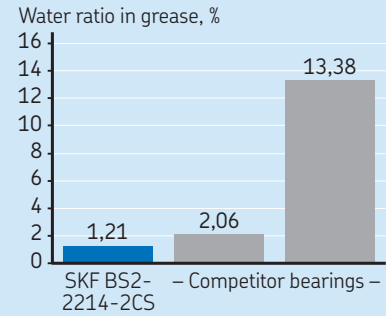
The double-lip seals provide optimum protection against solid contaminants and moisture.



Arizona dust test



Water spray test



A wide range of sealed bearings for many applications

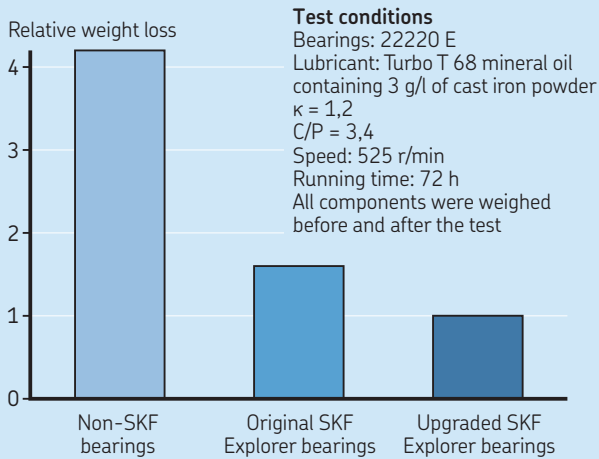
SKF offers the industry's widest range of sealed spherical roller bearings. Bore diameters range from 25 to 400 mm. Certain bearings in the 222- and 223-series are slightly wider to accommodate the seals.

SKF sealed spherical roller bearing range

Bore [mm]	Series	213	222	223	230	231	232	239	240	241	Size
25		↔									05
30		↔									06
35		↔									07
40		↔	↔								08
45		↔	↔								09
50		↔	↔								10
55		↔	↔								11
60		↔	↔								12
65		↔	↔								13
70		↔	↔								14
75		↔	↔								15
80		↔	↔								16
85		↔									17
90		↔	↔								18
95		↔									19
100		↔									20
110		↔									22
120		↔									24
130		↔									26
140											28
150											30
160											32
170											34
180											36
190											38
200											40
220											44
240											48
260											52
280											56
300											60
320											64
340											68
360											72
380											76
400											80

- = Total spherical roller bearings assortment
- = Sealed spherical roller bearings
- ↔ = Sealed spherical roller bearings slightly wider than standard bearing

Relative wear for different bearing steels



For more information about upgraded SKF Explorer spherical roller bearings, go to skf.com/upgrade

© SKF and SKF EXPLORER are registered trademarks of the SKF Group.

© SKF Group 2013
 The contents of this publication are the copyright of the publisher and may not be reproduced (even extracts) unless permission is granted. Every care has been taken to ensure the accuracy of the information contained in this publication but no liability can be accepted for any loss or damage whether direct, indirect or consequential arising out of the use of the information contained herein.

PUB BU/P9 06546/1 EN · November 2013

