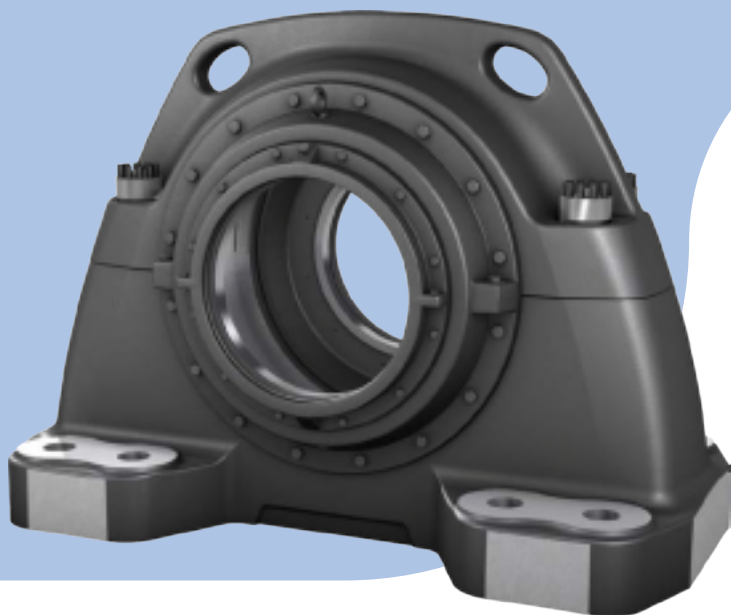


Why SKF?

SED bearing housings



SKF SED housings have a stiff and robust design and are accurately machined to protect and support the SKF bearings fitted in them. Combining minimal deflection under load with good lubricant retention and high resistance to the ingress of contaminants, these housings optimize the performance and extend the service life of the bearing. SED housings are intended for loads acting towards the support surface, within an angle of $\pm 55^\circ$ to the perpendicular. They are available for shaft diameters ranging from 430 to 900 mm and for spherical roller bearings in the 30, 31, 32 and 39 series. Standard housings are suitable for grease lubrication. Oil circulation systems require housings with an RT suffix. Standard paint protects the housing in accordance to ISO 12944-2, corrosivity category C3.

Product features

- Stiff and robust design made of spheroidal graphite cast iron
- Machined to tight tolerances
- The standard multi-seal combines a radial shaft seal and a three stage labyrinth ring. It is designed to work effectively with both circulating oil and grease lubrication.
- Housing cap and base held together by four Superbolt® multi-jack tensioners
- Machined base ends
- Housing designed for good heat dissipation
- All housing components above 20 kgs. have provisions to attach suitable lifting devices
- Identification marks on caps and bases help to prevent mismatches during assembly
- Drilled holes for grease lubrication, of bearing and seals, fittings supplied
- Housing designed to be easily adapted to non-standard bearings
- Housing optimized for SKF bearings

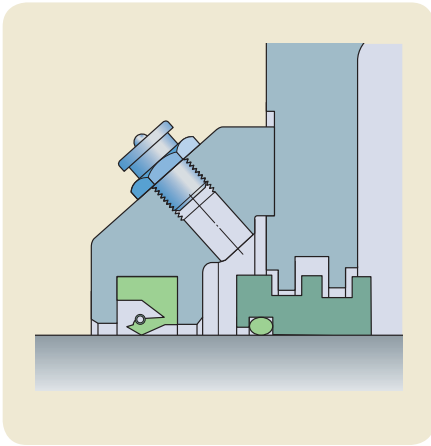
User benefits

- Optimize the performance and extend the service life of the bearing
- Low maintenance costs
- Same seals suitable for both oil circulation and grease lubrication
- Easy mounting
- The Superbolts that retain the cap can be easily installed by one person using a torque wrench
- Good heat dissipation reduces operating temperatures
- Long relubrication intervals
- Easy to connect suitable lifting devices
- Reduced risk of mixing caps and bases during mounting
- Easy relubrication of bearing and seals
- Can be easily adapted to accommodate non-standard bearings
- Possible to purchase all items from one supplier

Common applications

- Conveyors
- Mills
- Crushers
- Mining applications like elevators or kiln support for large shafts

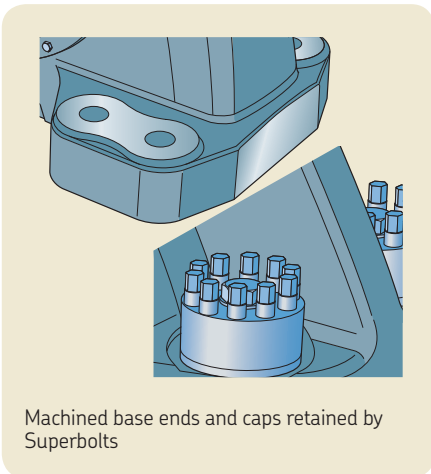




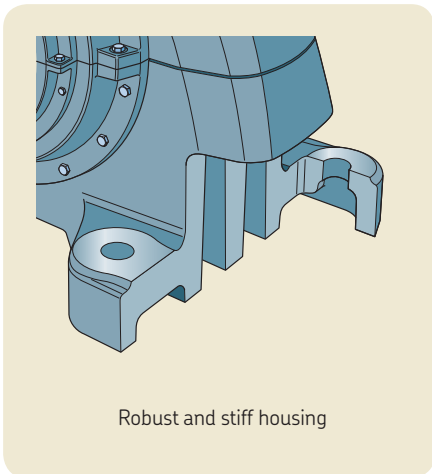
Multi-seal

The multi-seal is a combination of a labyrinth seal and a radial shaft seal and is designed for both grease and circulating oil lubrication. SED housings with an RT suffix can be used for circulating oil lubrication systems and have a threaded oil outlet in each cover.

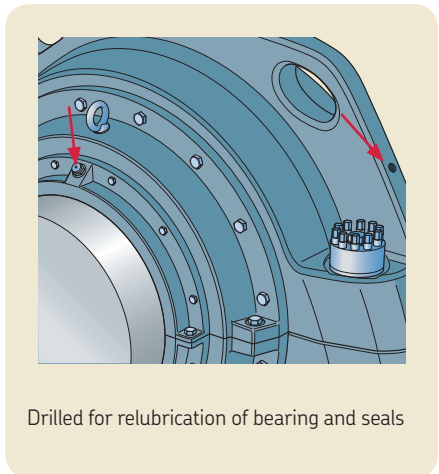
New housing design for easier installation and maintenance



Machined base ends and caps retained by Superbolts



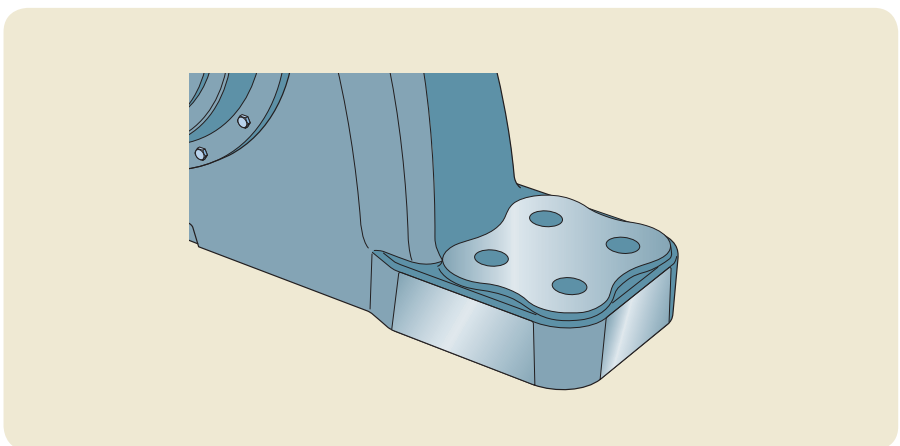
Robust and stiff housing



Drilled for relubrication of bearing and seals

Variant with narrow base

When space is limited SED housings are available in a variant with a narrower base and differently positioned attachment bolts. Contact SKF for more information.



© SKF is a registered trademark of the SKF Group.

Superbolt is a registered trademark of the Nord-Lock Group.

© SKF Group 2014

The contents of this publication are the copyright of the publisher and may not be reproduced (even extracts) unless prior written permission is granted. Every care has been taken to ensure the accuracy of the information contained in this publication but no liability can be accepted for any loss or damage whether direct, indirect or consequential arising out of the use of the information contained herein.

PUB BU/S7 14424 EN · May 2014

