

**SCHNEEBERGER**  
LINEAR TECHNOLOGY



Positioning Linear Stages  
NFM 7 / 9 / 12

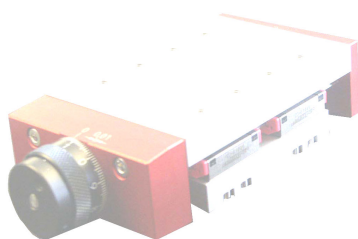


**SCHNEEBERGER**  
LINEAR TECHNOLOGY

> **Positioning Linear Stages NFM 7 / 9 / 12**

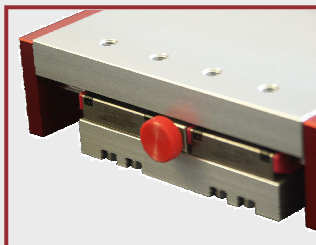
Single axis manual driven stages with SCHNEEBERGER MINIRAIL – guideways.

Manual positioning by a precision lead-screw, with anti-backlash nut and graduated drum, that can be set to zero position. Reading accuracy 0.01mm, strokes from 25mm to 150mm. NFM is a modular system with options for table base and top plate lengths, to give strokes between 25 and 150mm. Table parts made in aluminium anodised, MINIRAIL linear guideways and lead screw in corrosion resistant steel. Stage can be integrated in any plane. Special sizes and/or special attaching holes available on request. Optional clamping device that clamps onto rail, (except L1 = 50mm) or directly on the lead screw (L dimension increased by 7mm). The clamping device can be mounted on either side of the stage. Optional hand crank also available (Size 9/12 only).

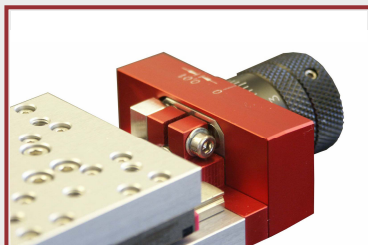


**Options:**

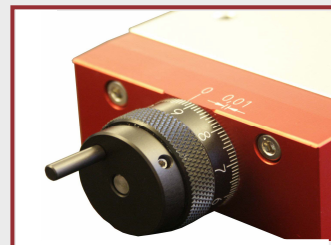
clamping on rail



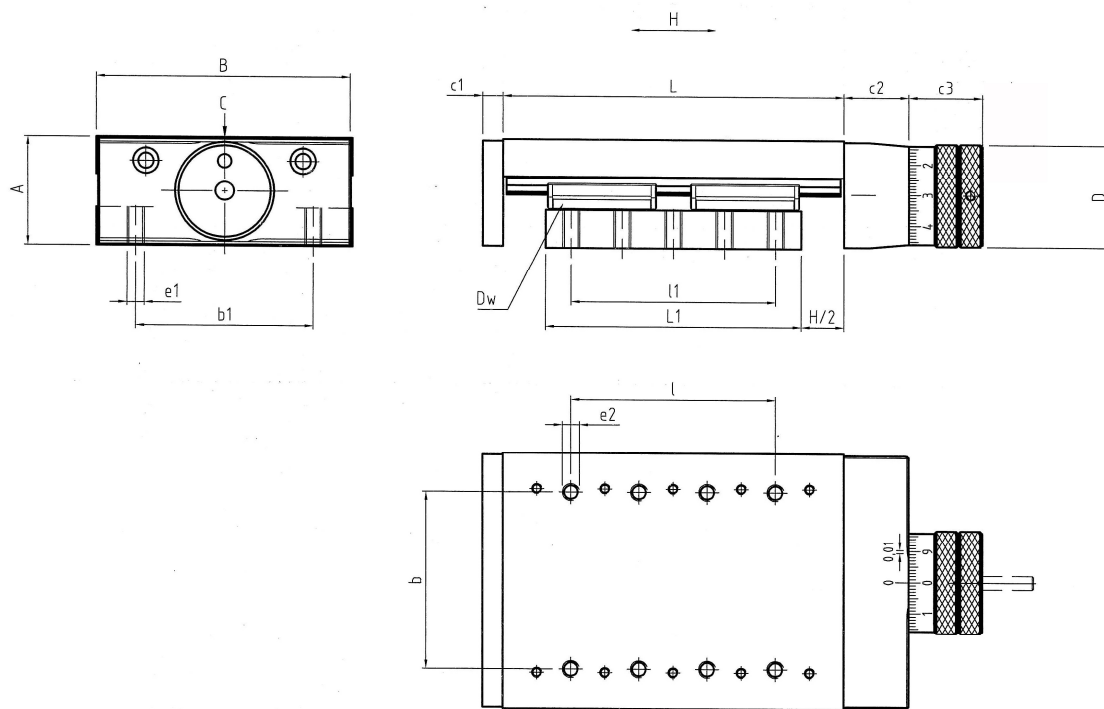
clamping on lead screw



hand crank



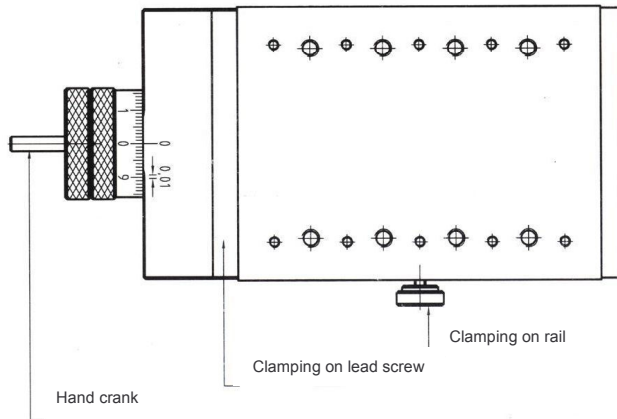
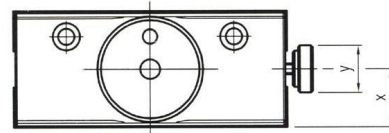
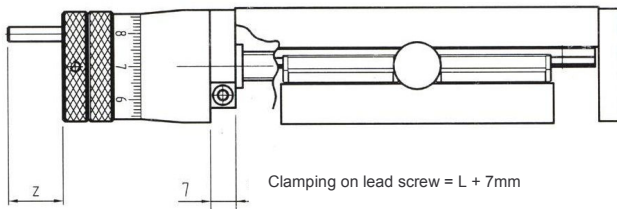
Typ	A	B	H	Dw	L	L1	l	l1	e1	e2	b	b1	c1	c2	c3	D	vis
NFM 7- 75/50			25		75	50	3x15	2x15									
NFM 7-100/50			50		100	50	5x15	2x15									
NFM 7-125/50	25	50	75	MNN 7	125	50	3x30	2x15	M4/8	M4/8	30	30	5	14	20	Ø24	M5x0.5
NFM 7-100/75			25		100	75	5x15	4x15									
NFM 7-125/75			50		125	75	3x30	4x15									
NFM 7-150/75			75		150	75	4x30	4x15									
Typ	A	B	H	Dw	L	L1	l	l1	e1	e2	b	b1	c1	c2	c3	D	t
NFM 9-100/75			25		100	75	3x20	3x20									
NFM 9-125/75			50		125	75	4x20	3x20									
NFM 9-150/75			75		150	75	5x20	3x20									
NFM 9-175/75			100		175	75	7x20	3x20									
NFM 9-200/75	32	75	125	MNN 9	200	75	8x20	3x20	M5/11	M5/11	52	52	6	19	22	Ø30	M8x1
NFM 9-125/100			25		125	100	4x20	4x20									
NFM 9-150/100			50		150	100	5x20	4x20									
NFM 9-175/100			75		175	100	7x20	4x20									
NFM 9-200/100			100		200	100	8x20	4x20									
Typ	A	B	H	Dw	L	L1	l	l1	e1	e2	b	b1	c1	c2	c3	D	t
NFM 12-150/100			50		150	100	4x25	3x25									
NFM 12-200/100	36	100	100	MNN 12	200	100	6x25	3x25	M5/11	M5/11	75	75	7	19	22	Ø34	M8x1
NFM 12-250/100			150		250	100	4x50	3x25									





**SCHNEEBERGER**  
LINEAR TECHNOLOGY

**Options:**



Typ	X	Y	Z
NFM 7 --/--	12.4	Ø 10	--
NFM 9 --/--	16	Ø 13	15
NFM 12 --/--	17.5	Ø 13	15

**> SCHNEEBERGER – Essentials for the best!**

**SCHNEEBERGER COMPANIES**

**SWITZERLAND**  
SCHNEEBERGER AG  
St. Urbanstrasse 12  
4914 Roggwil/BE  
Phone +41 62 918 41 11  
Fax +41 62 918 41 00  
E-Mail:  
info-ch@schneeberger.com  
www.schneeberger.com

**GERMANY**  
SCHNEEBERGER GmbH  
Gräfenau, Postfach 70  
75339 Höfen/Enz  
Phone +49 7081 782 0  
Fax +49 7081 782 124  
E-Mail:  
info-d@schneeberger.com

**ITALY**  
SCHNEEBERGER S.p.A.  
Via S. Gottardo, 10  
21021 Angera VA  
Phone +39 0331 93 2010  
Fax +39 0331 93 1655  
E-Mail:  
info-i@schneeberger.com

**USA**  
SCHNEEBERGER Inc.  
11 DeAngelo Drive  
Bedford, MA 01730  
Phone +1 781 271 0140  
Fax +1 781 275 4749  
E-Mail:  
info-usa@schneeberger.com

**CHINA**  
SCHNEEBERGER (Shanghai) Co., Ltd.  
Denghui Lu 1128, Minhand District  
Shanghai 201108, China  
Phone +86 21 6209 0037 / 27  
Fax +86 21 6209 0102  
E-Mail:  
info-cn@schneeberger.com

**JAPAN**  
Nippon SCHNEEBERGER KK  
1-49-12 Shimouma, Setagaya-ku  
Tokyo 154-0002  
Phone +81 3 5779 7339  
Fax +81 3 3487 6010  
E-Mail:  
info-j@schneeberger.com