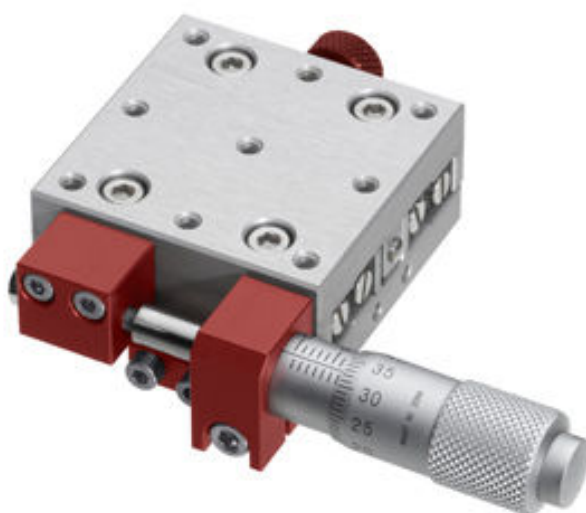


SCHNEEBERGER
LINEAR TECHNOLOGY



Positioning Tables

NH 2-40-40-AL

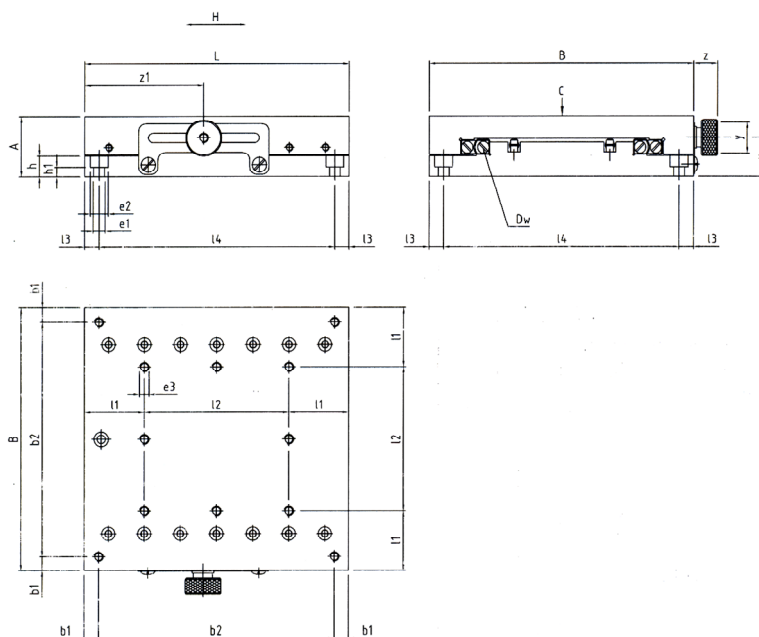
NH 2-65-65-AL

NH 2-110-110-AL

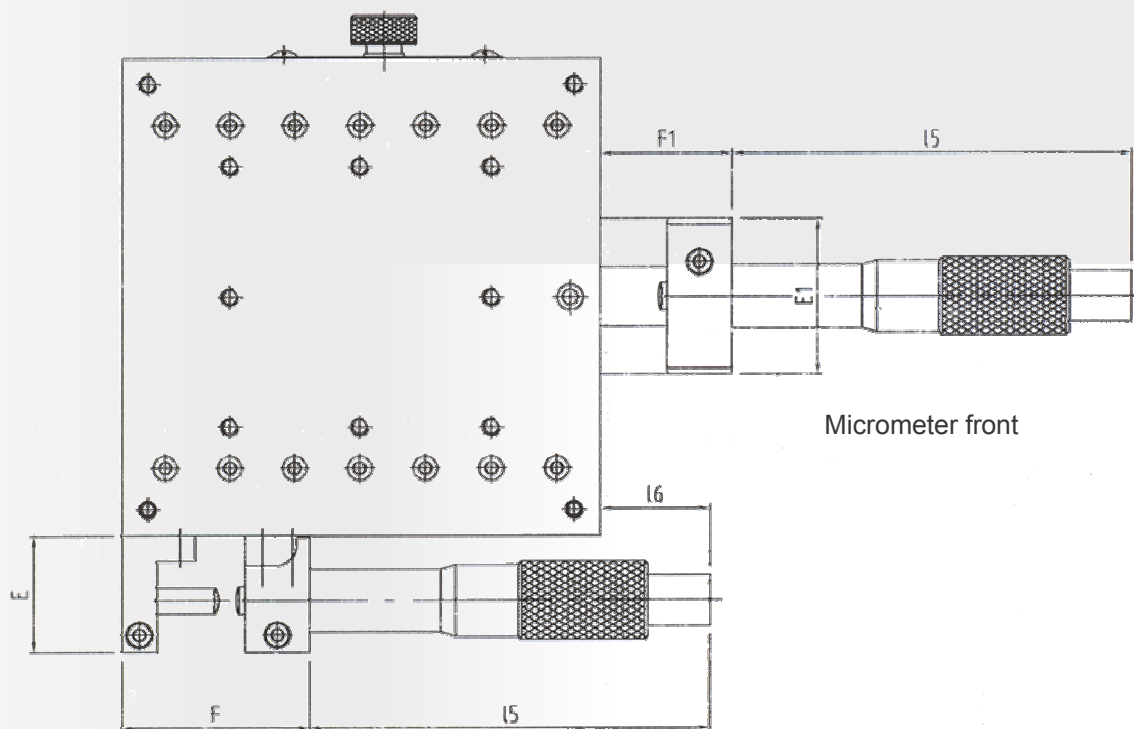


> Positioning Tables NH2-40-40-AL, NH2-65-65-AL, NH2-110-110-AL

Single axis stages with SCHNEEBERGER linear guideways Type R 2. Manual positioning with micrometer, reading accuracy 0.01mm. Table parts are lightly loaded onto the micrometer screw by a tension spring. Design is available with or without micrometer. Micrometer fastening on the side or front of the stage. Tables of the same size can easily be assembled into 2 axis configuration. Standard strokes 13/13 and 25/(40)mm. Special hole patterns or strokes on request. All designs with a clamping system on the side of the stage. Table parts in aluminium anodised. Linear guideways in corrosion resistant steel. Tables can be integrated in any plane (micrometer below stage in vertical orientation!).



TYPE	A	B	H	Dw	L	l1	l2	l3	l4	b 1	b 2	h	h 1	e1	e2	e 3	x	y	z	z1
NH2 40-40 AL	19	40	13	R2	40	4	2x16	4	32	-	-	6	2.5	ø3.5	ø6	M3/6	13	ø10	8	20
NH2-65-65 AL	20	65	13	R2	65	17.5	2x15	3.5	58	3.5	58	6.5	3	ø3.5	ø6	M3/6	13	ø10	8	32.5
NH2-110-110 AL	25	110	40	R2	110	25	2x30	6	98	6	98	8.5	4	ø4.5	ø7.5	M4/8	16	ø15	10	49.5



Micrometer side

TYP	E	F	E1	F1	I5	I6
NH2 40-40-AL	14	39.5	21	21.5	45	44
NH2-65-65-AL	18.5	39	21	21.5	45	18.5
NH2-110-110-AL	27	43.5	26	30.5	92	25.5





SCHNEEBERGER
LINEAR TECHNOLOGY

> **SCHNEEBERGER – Essentials for the best!**

SCHNEEBERGER COMPANIES

SWITZERLAND

SCHNEEBERGER AG
St. Urbanstrasse 12
4914 Roggwil/BE
Phone +41 62 918 41 11
Fax +41 62 918 41 00
E-Mail:
info-ch@schneeberger.com
www.schneeberger.com

GERMANY

SCHNEEBERGER GmbH
Gräfenau, Postfach 70
75339 Höfen/Enz
Phone +49 7081 782 0
Fax +49 7081 782 124
E-Mail:
info-d@schneeberger.com

ITALY

SCHNEEBERGER S.p.A.
Via S. Gottardo, 10
21021 Angera VA
Phone +39 0331 93 2010
Fax +39 0331 93 1655
E-Mail:
info-i@schneeberger.com

USA

SCHNEEBERGER Inc.
11 DeAngelo Drive
Bedford, MA 01730
Phone +1 781 271 0140
Fax +1 781 275 4749
E-Mail:
info-usa@schneeberger.com

CHINA

SCHNEEBERGER (Shanghai) Co., Ltd.
Denghui Lu 1128, Minhand District
Shanghai 201108, China
Phone +86 21 6209 0037 / 27
Fax +86 21 6209 0102
E-Mail:
info-cn@schneeberger.com

JAPAN

Nippon SCHNEEBERGER KK
1-49-12 Shimouma, Setagaya-ku
Tokyo 154-0002
Phone +81 3 5779 7339
Fax +81 3 3487 6010
E-Mail:
info-j@schneeberger.com