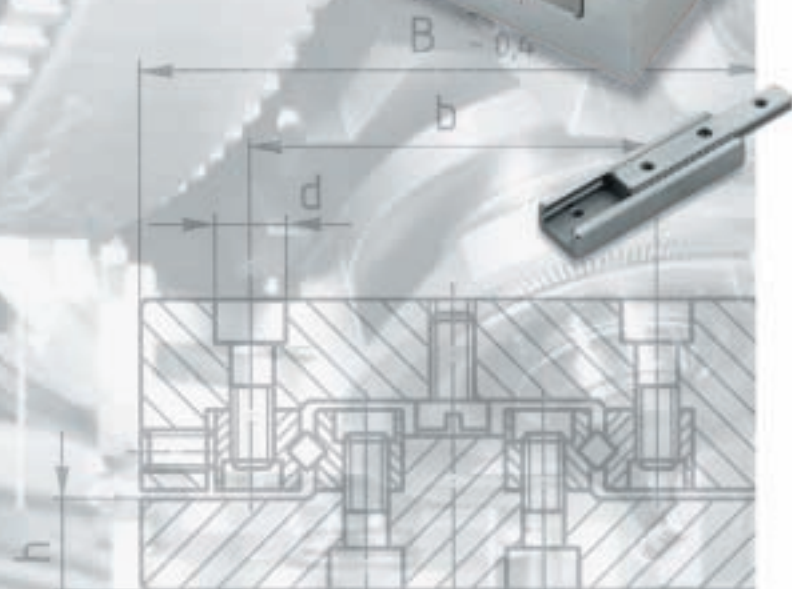


**SCHNEEBERGER**  
LINEAR TECHNOLOGY



**SLIDES**  
Dynamic and Precise





**Table of Contents**

|   |        |
|---|--------|
| <b>1 Product Overview</b>                       | S ● 4  |
| <b>2 Applications</b>                           |        |
| 2.1 Die Attach System with ND 1                 | S ● 6  |
| 2.2 Multimode Fusion Splicer with NK 1 Tables   | S ● 7  |
| 2.3 Printed Circuit Board Assembly with NDN 1   | S ● 8  |
| 2.4 Laser Measuring Device with ND 1            | S ● 9  |
| <b>3 Frictionless Tables Type NK</b>            |        |
| 3.1 Frictionless Tables Type NK                 | S ● 11 |
| 3.2 Material                                    | S ● 11 |
| 3.3 Standard Model                              | S ● 11 |
| 3.4 Special Models                              | S ● 11 |
| 3.5 Specifications                              | S ● 12 |
| 3.6 Accessories                                 | S ● 16 |
| <b>4 Frictionless Tables Type NKL</b>           |        |
| 4.1 Frictionless Tables Type NKL                | S ● 17 |
| 4.2 Material                                    | S ● 17 |
| 4.3 Standard Model                              | S ● 17 |
| 4.4 Special Model                               | S ● 17 |
| 4.5 Specifications                              | S ● 18 |
| <b>5 Micro Frictionless Tables Type ND</b>      |        |
| 5.1 Micro Frictionless Tables Type ND           | S ● 23 |
| 5.2 Material                                    | S ● 23 |
| 5.3 Standard Model                              | S ● 23 |
| 5.4 Special Model                               | S ● 23 |
| 5.5 Specifications                              | S ● 24 |
| <b>6 Micro Frictionless Tables Type NDN</b>     |        |
| 6.1 Micro Frictionless Tables Type NDN          | S ● 27 |
| 6.2 Material                                    | S ● 27 |
| 6.3 Standard Model                              | S ● 27 |
| 6.4 Specifications                              | S ● 28 |
| <b>7 Technical Information</b>                  |        |
| 7.1 Acceptance Tolerances                       | S ● 30 |
| 7.2 Accuracy                                    | S ● 30 |
| 7.3 Materials                                   | S ● 32 |
| 7.4 Permissible Operating Temperatures          | S ● 32 |
| 7.5 Lubrication                                 | S ● 32 |
| 7.6 Permissible Velocities and Accelerations    | S ● 32 |
| 7.7 Friction, Running Accuracy and Smoothness   | S ● 32 |
| <b>8 Design and Fitting Guidelines</b>          |        |
| 8.1 Horizontal and Vertical Fitting             | S ● 33 |
| 8.2 Attaching Frictionless Tables               | S ● 33 |
| 8.3 Preloading Frictionless Tables              | S ● 33 |
| 8.4 Design of Base Unit                         | S ● 33 |
| 8.5 Accessories for Frictionless Tables         | S ● 33 |
| <b>9 Dimensioning Frictionless Tables</b>       |        |
| 9.1 Load Carrying Capacity and Operational Life | S ● 34 |
| 9.2 Moment Loading                              | S ● 35 |





|   |        |
|---|--------|
| <b>1 Product Overview</b>                 | Yellow |
| <b>2 Applications</b>                     | Grey   |
| <b>3 Frictionless Tables Type NK</b>      | Yellow |
| <b>4 Frictionless Tables Type NKL</b>     | Grey   |
| <b>5 Frictionless Tables Type ND</b>      | Yellow |
| <b>6 Frictionless Tables Type NDN</b>     | Grey   |
| <b>7 Technical Information</b>            | Yellow |
| <b>8 Design and Fitting Guidelines</b>    | Grey   |
| <b>9 Dimensioning Frictionless Tables</b> | Yellow |

## Product Overview

### Frictionless Tables Type NK

- Single axis model in steel or cast-iron depending on the size
- With roller cages
- 5 sizes
- Lengths from 25 to 510 mm
- Strokes from 10 to 450 mm
- Supports a variety of applications due to the many different sizes
- For highest accuracy requirements
- For highest accelerations available with FORMULA-S



### Frictionless Tables Type NKL

- Single axis model
- Light design, table components in aluminum
- 4 sizes
- With roller cages
- Lengths from 25 to 410 mm
- Strokes from 10 to 280 mm
- For highest accelerations available with FORMULA-S



**Micro Frictionless Tables Type ND**

- Single axis model in steel
- 3 sizes
- With roller cages
- Lengths from 25 to 155 mm
- Strokes from 12 to 90 mm
- Low friction force
- For highest accuracy requirements



**Micro Frictionless Tables Type NDN**

- Single axis model in corrosion resistant steel
- 3 sizes
- With ball cage in brass
- Cage centering mechanism which helps to avoid cage creep
- Length from 10 to 80 mm
- Strokes from 5 to 70 mm
- For highest accuracy requirements
- Suitable for high speed applications

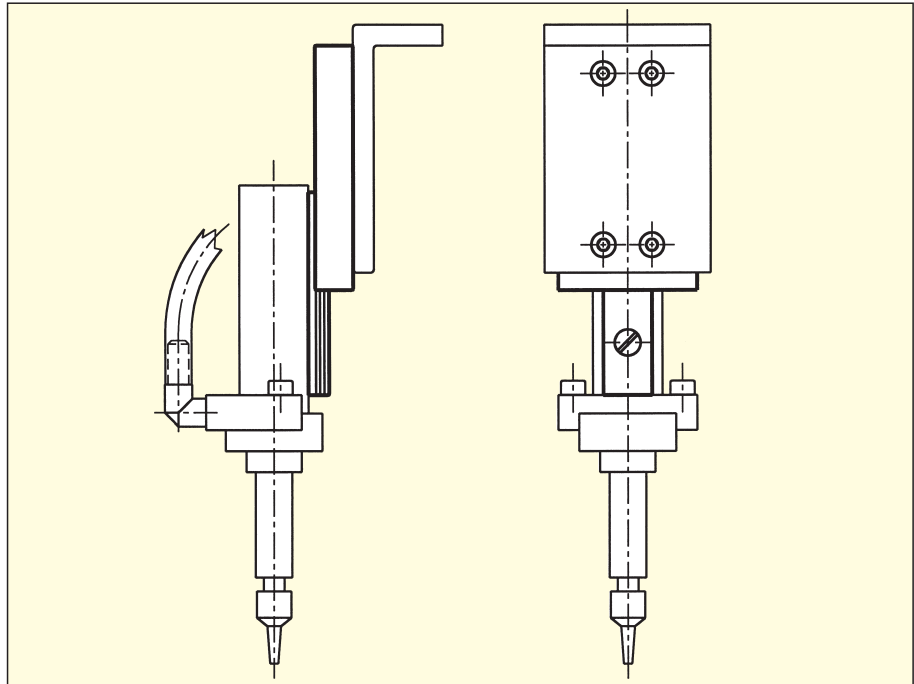


## Applications

### 2.1 Die Attach System with ND 1

One of the ideal applications for the ND 1 table is in Die Attach equipment. Die Attach is one of the central steps in the manufacture of integrated circuits (IC's). In the first step, a wafer full of IC's is sliced up with a diamond dicing saw. After sawing, the individual IC's or «die» are picked off of the sawed wafer and placed onto a metal lead frame in the die attach operation. The lead frame has been prepared with an epoxy adhesive, which secures the die to the leadframe. In subsequent operations the metal pads on the die are connected to the metal leads of the frame providing an electrical connection to the printed circuit board to which the completed IC will eventually be attached. The high speed Z-axis of the die attach machine carries out the actual «pick and place» operation. The individual die are picked from a wafer and placed on the lead frame in a specific location. A machine vision system is used to accurately locate the independent positions, of both the die on the wafer and the leadframe where it will be placed. The accuracy of the joining of the two components is critical to the success of subsequent operations.

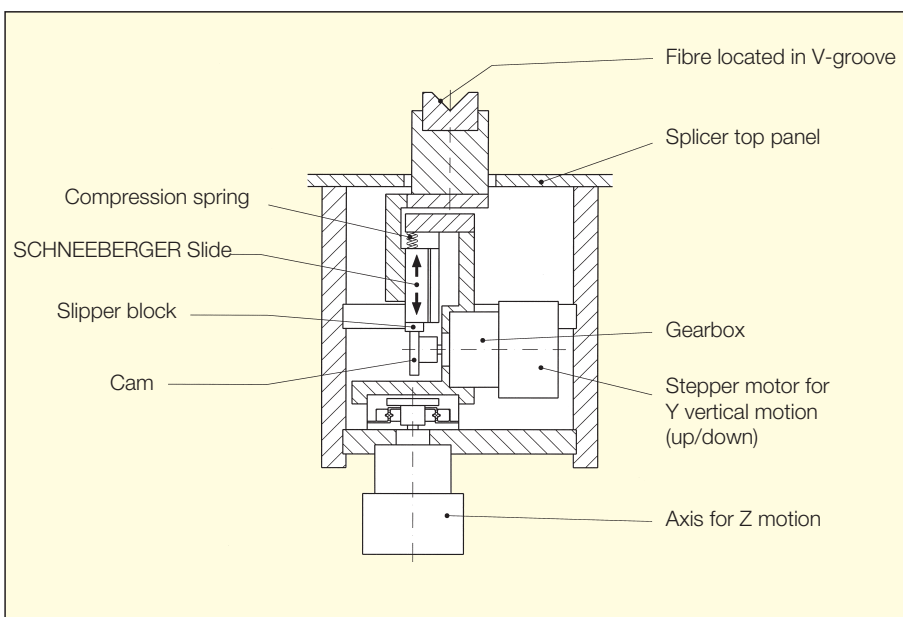
| Product                             | ND 1                |
|-------------------------------------|---------------------|
| Stroke                              | 25 mm               |
| Nominal stroke                      | 15 mm               |
| Operating orientation               | vertical            |
| Position accuracy                   | ± 0.05 mm           |
| Acceleration                        | 30 m/s <sup>2</sup> |
| Straightness and Flatness of travel | 0.004 mm            |



**2.2 Multimode Fusion Splicer with NK 1 Tables**

Multimode Fusion Splicers are portable optical fibre jointing machines weighing approximately 10 kg. These are used in the field for the installation of optical fibre systems, for example for LAN's (Local Area Networks). Using a high precision process, two optical fibres are fusion joined together. Great accuracy is required so that the transmission quality of the optical fibre is not significantly reduced. Two clamping devices, one for each fibre, accurately locate and hold the two optical fibres and are guided by SCHNEEBERGER NK 1 roller tables. Prior to splicing, the fibre ends are precisely aligned to each other to sub-micron accuracy in three mutually orthogonal axes. This adjustment is effected using SCHNEEBERGER NK 1 tables driven by stepper motors. The accuracy of adjustment is monitored on a built-in LCD screen via an integral CCD camera system and controlled manually by means of a simple handwheel. Thereupon the fusion process takes place to produce a high quality, low-loss joint. This whole process takes on average one minute. Finally, the completed splice is protected by a heat shrink sleeve which is applied using the fusion splicer's integral heatoven.

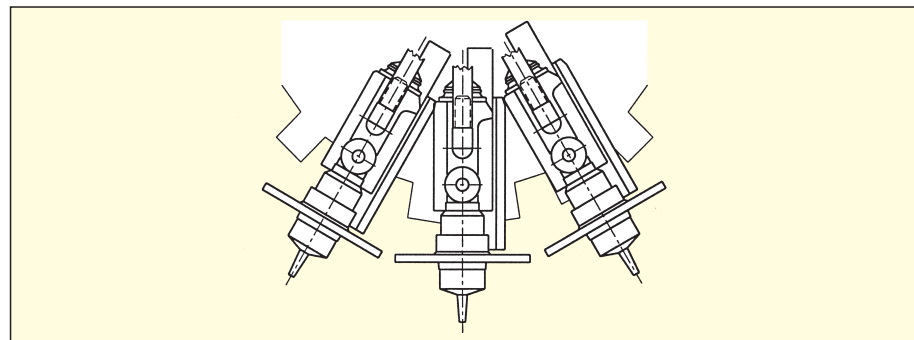
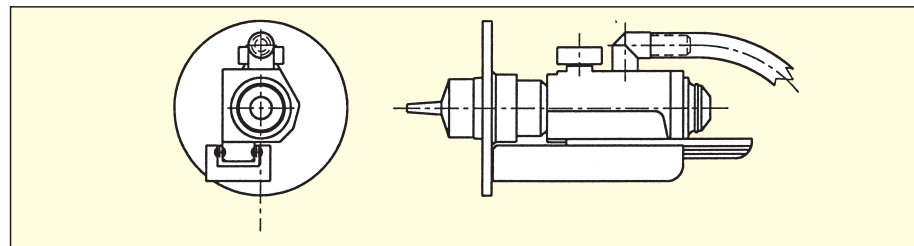
| Product                             | NK 1                |
|-------------------------------------|---------------------|
| Stroke                              | 12 mm               |
| Nominal stroke                      | 10 mm               |
| Operating orientation               | vertical/horizontal |
| Position accuracy                   | 0.001 mm            |
| Acceleration                        | low                 |
| Straightness and Flatness of travel | 0.002 mm            |



**2.3 Printed Circuit Board Assembly with NDN 1**

In this application, NDN 1 micro frictionless tables are utilized for placing electronic components such as resistors, capacitors, coils and integrated circuits on printed circuit boards. With a gripper installed on the top of the SCHNEEBERGER NDN 1 micro frictionless table, the components are picked from a large hopper. The parts are then placed on a specific position on the printed circuit board with a Z-stroke of the table. In this case, the NDN 1 table is driven by a synchronous toothed belt. The SCHNEEBERGER NDN 1 distinguishes itself particularly by its constant precision under the extra demands on service life and accuracy imposed by the high dynamic loading found in this application.

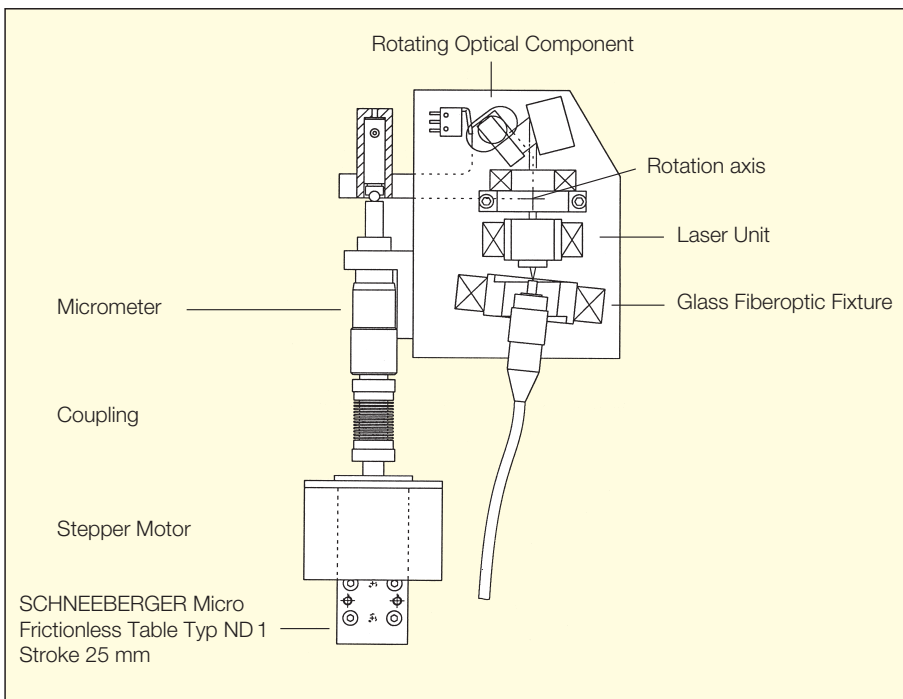
| Product                             | NDN 1                     |
|-------------------------------------|---------------------------|
| Stroke                              | 20 mm                     |
| Nominal stroke                      | 15 mm                     |
| Operating orientation               | vertical                  |
| Position accuracy                   | 0.03 mm                   |
| Acceleration                        | up to 15 m/s <sup>2</sup> |
| Straightness and Flatness of travel | 0.003 mm                  |



**2.4 Laser Measuring Device with ND 1**

In section 2.2 Multimode Fusion Splicer, the connecting of glass fibres in the field was described. This application involves the measurement of glass fibre connections. The measuring procedure is based on the angle change of a reflector, in which the wave length of the laser beam is changed and evaluated. The mechanical rotation of the reflector is controlled through a stepping motor drive with a micrometer spindle. The stepping motor is installed on a roller table ND 1, in order to compensate for the longitudinal movement of the micrometer screw. This makes exceptionally high demands on the running characteristics of the roller table, since this has a direct influence on the measurement results.

| Product                             | ND 1                    |
|-------------------------------------|-------------------------|
| Stroke                              | 32 mm                   |
| Nominal stroke                      | 25 mm                   |
| Operating orientation               | horizontal              |
| Position accuracy                   | no special requirements |
| Acceleration                        | low                     |
| Straightness and Flatness of travel | 0.004 mm                |

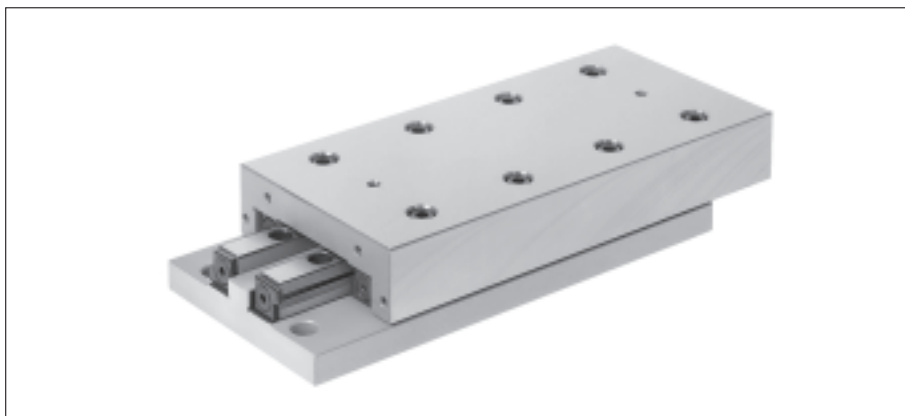




## Frictionless Tables Type NK

**SCHNEEBERGER**  
LINEAR TECHNOLOGY

### 3.1 Frictionless Tables Type NK



- Single axis model in steel or cast-iron depending on the size
- With roller cages
- 5 sizes
- Lengths from 25 to 510 mm
- Strokes from 10 to 450 mm
- Supports a variety of applications due to the many different sizes
- For highest accuracy requirements
- For highest accelerations available with FORMULA-S

### 3.2 Material

Sizes NK 1 and 2 = Steel  
Sizes NK 3, 6 and 9 = Cast-iron

### 3.3 Standard Model

Type NK frictionless tables consist of equal length upper and lower sections and type R linear bearings. All tables are equipped with type AC roller cages and type GB endpieces and can be mounted vertically or horizontally. The lower section includes standardized attaching holes. The sides opposite to the setscrews in the upper and lower sections can be used for mounting purposes. For the standard model stroke limiting is made by means of two screws in the upper section and one screw in the lower section. These screws can withstand only small forces or impacts in the direction of motion and should not be used as stops. With FORMULA-S these screws are no more necessary due to the cage assist system.

### 3.4 Special Models

#### Standard Attaching Holes (-B)

In the upper section (other hole configurations on request)

#### Roller Cages Type EE (-EE)

Plastic material, only available for sizes 6 and 9. Provides sealing against dirt and dust; therefore somewhat stiffer motion

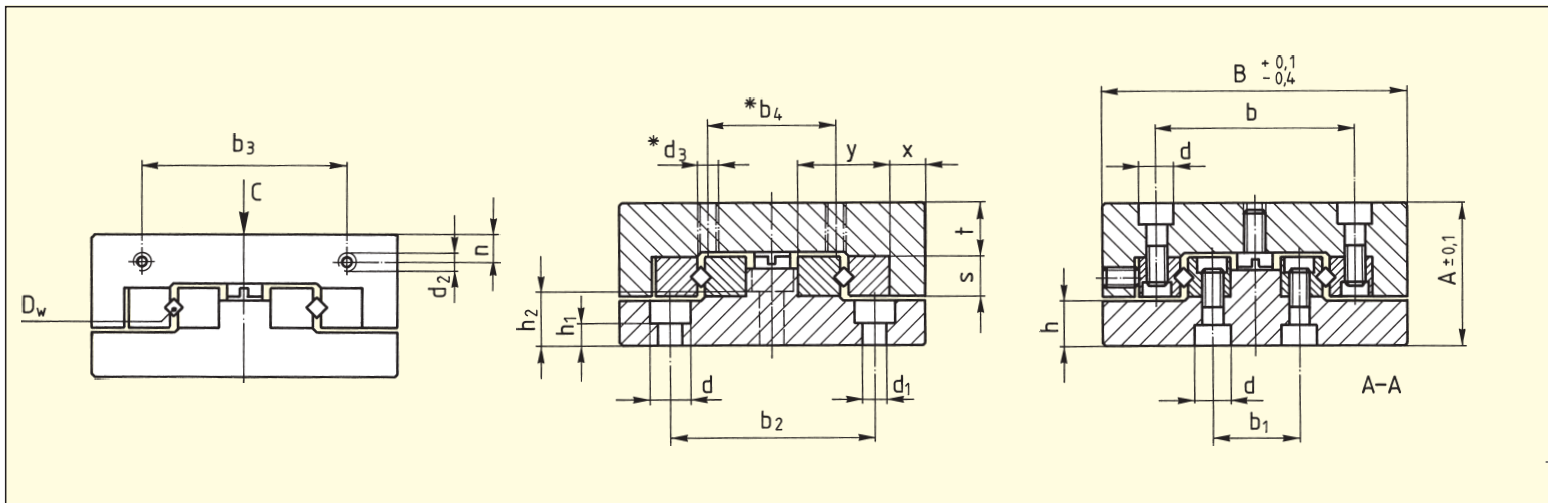
#### Ball Cages Type AK (-AK)

For reduced sensitivity to dirt. Lower load carrying capacity

#### Cage assist integrated (-KS)

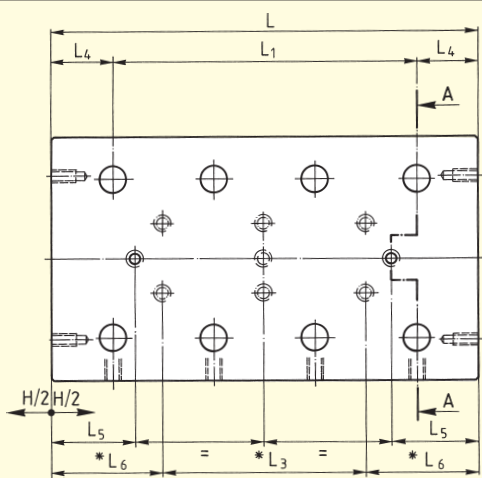
for high dynamics and all assembly orientations for sizes 3 and 6

### 3.5 Specifications



| Order No. | Dimensions (mm) |    |                |     | L   | L <sub>1</sub> | L <sub>2</sub> | *L <sub>3</sub> | L <sub>4</sub> | L <sub>5</sub> | *L <sub>6</sub> | L <sub>7</sub> | b    | b <sub>1</sub> | b <sub>2</sub> | b <sub>3</sub> | *b <sub>4</sub> | d   | d <sub>1</sub> |  |
|-----------|-----------------|----|----------------|-----|-----|----------------|----------------|-----------------|----------------|----------------|-----------------|----------------|------|----------------|----------------|----------------|-----------------|-----|----------------|--|
|           | A               | B  | D <sub>w</sub> | H   |     |                |                |                 |                |                |                 |                |      |                |                |                |                 |     |                |  |
| NK 1-25   |                 |    |                | 10  | 25  | 1×10           | –              |                 |                | 3.0            |                 |                |      |                |                |                |                 |     |                |  |
| NK 1-35   |                 |    |                | 18  | 35  | 2×10           |                | 1×10            |                | 4.5            |                 |                |      |                |                |                |                 |     |                |  |
| NK 1-45   |                 |    |                | 25  | 45  | 3×10           |                | 2×10            |                | 6              |                 |                |      |                |                |                |                 |     |                |  |
| NK 1-55   | 17              | 30 | 1.5            | 32  | 55  | 4×10           | 10             | 3×10            | 7.5            | 7.5            | 12.5            | 3.5            | 18.4 | 8.6            | 22             | 12             | 10              | 4.1 | 2.55           |  |
| NK 1-65   |                 |    |                | 40  | 65  | 5×10           |                | 4×10            |                | 8.5            |                 |                |      |                |                |                |                 |     |                |  |
| NK 1-75   |                 |    |                | 45  | 75  | 6×10           |                | 5×10            |                | 11             |                 |                |      |                |                |                |                 |     |                |  |
| NK 1-85   |                 |    |                | 50  | 85  | 7×10           |                | 6×10            |                | 13.5           |                 |                |      |                |                |                |                 |     |                |  |
| NK 2-35   |                 |    |                | 18  | 35  | 1×15           | –              |                 |                | 3              |                 |                |      |                |                |                |                 |     |                |  |
| NK 2-50   |                 |    |                | 30  | 50  | 2×15           |                | 1×15            |                | 4.5            |                 |                |      |                |                |                |                 |     |                |  |
| NK 2-65   |                 |    |                | 40  | 65  | 3×15           |                | 2×15            |                | 7              |                 |                |      |                |                |                |                 |     |                |  |
| NK 2-80   | 21              | 40 | 2              | 50  | 80  | 4×15           | 15             | 3×15            | 10             | 9.5            | 17.5            | 5              | 25   | 11             | 30             | 16             | 15              | 6   | 3.5            |  |
| NK 2-95   |                 |    |                | 60  | 95  | 5×15           |                | 4×15            |                | 12             |                 |                |      |                |                |                |                 |     |                |  |
| NK 2-110  |                 |    |                | 70  | 110 | 6×15           |                | 5×15            |                | 14.5           |                 |                |      |                |                |                |                 |     |                |  |
| NK 2-125  |                 |    |                | 80  | 125 | 7×15           |                | 6×15            |                | 17             |                 |                |      |                |                |                |                 |     |                |  |
| NK 3-55   |                 |    |                | 30  | 55  | 1×25           | –              |                 |                | 5.5            |                 |                |      |                |                |                |                 |     |                |  |
| NK 3-80   |                 |    |                | 45  | 80  | 2×25           |                | 1×25            |                | 10.5           |                 |                |      |                |                |                |                 |     |                |  |
| NK 3-105  |                 |    |                | 60  | 105 | 3×25           |                | 2×25            |                | 15.5           |                 |                |      |                |                |                |                 |     |                |  |
| NK 3-130  | 28              | 60 | 3              | 75  | 130 | 4×25           | 25             | 3×25            | 15             | 20.5           | 27.5            | 10             | 39   | 17             | 40             | 40             | 25              | 7.5 | 4.5            |  |
| NK 3-155  |                 |    |                | 90  | 155 | 5×25           |                | 4×25            |                | 25.5           |                 |                |      |                |                |                |                 |     |                |  |
| NK 3-180  |                 |    |                | 105 | 180 | 6×25           |                | 5×25            |                | 30.5           |                 |                |      |                |                |                |                 |     |                |  |
| NK 3-205  |                 |    |                | 130 | 205 | 7×25           |                | 6×25            |                | 30.5           |                 |                |      |                |                |                |                 |     |                |  |

\* Only with special model B



Layout of the standard attaching holes in the lower section

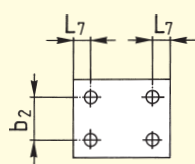


Fig. 1

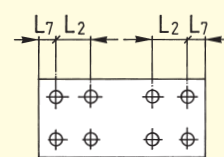


Fig. 2

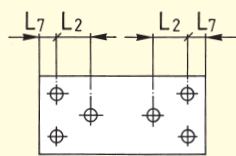


Fig. 3

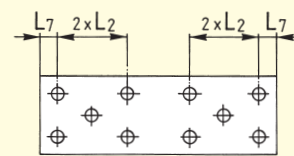
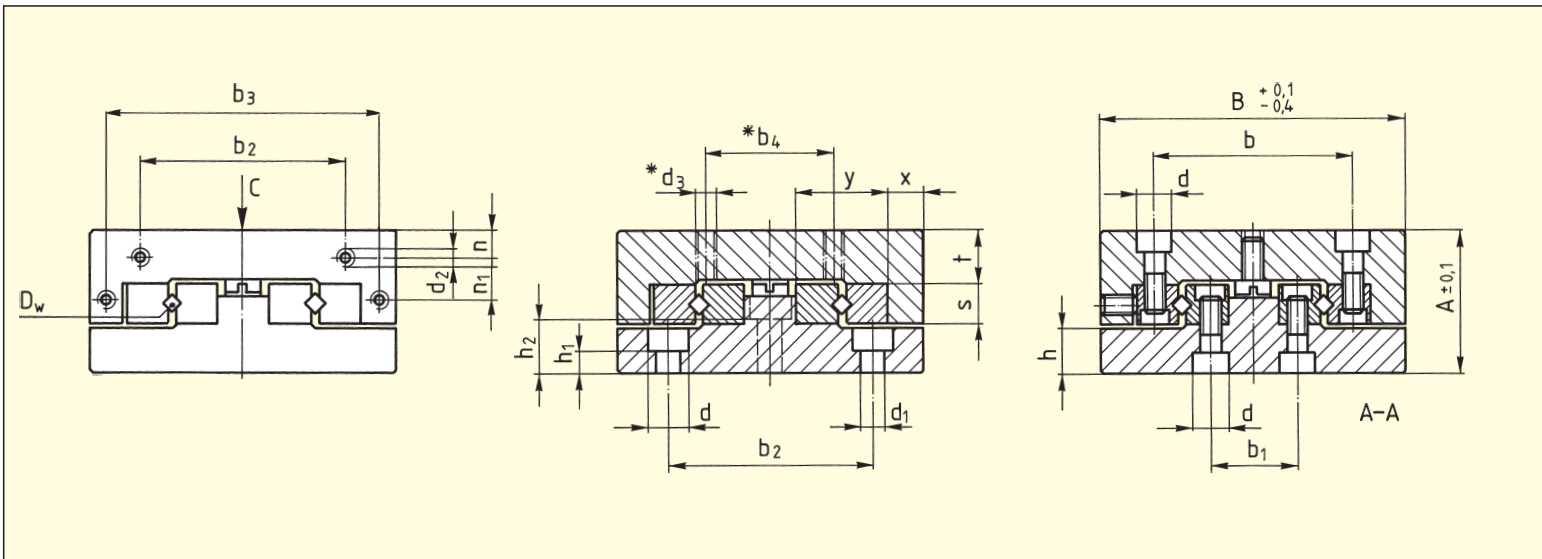


Fig. 4

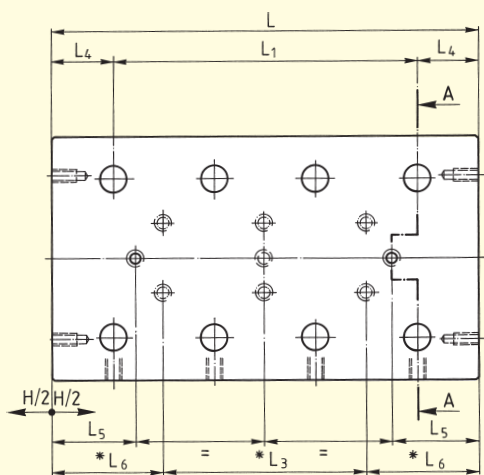
| $d_2$ | $*d_3$ | $h$   | $h_1$ | $h_2$ | $n$ | $s$ | $t$  | $x$ | $y$ | $C$ in N | $M_L$ in Nm | $M_Q$ in Nm | Weight in kg | Fig. |
|-------|--------|-------|-------|-------|-----|-----|------|-----|-----|----------|-------------|-------------|--------------|------|
| M2    | M2     | 5.5   | 3     | -     | 2.5 | 4   | 7    | 4   | 8.5 | 250      | 1.20        | 1.69        | 0.08         | 1    |
|       |        |       |       |       |     |     |      |     |     | 350      | 1.80        | 2.36        | 0.112        | 1    |
|       |        |       |       |       |     |     |      |     |     | 450      | 2.40        | 3.04        | 0.144        | 1    |
|       |        |       |       |       |     |     |      |     |     | 550      | 3.00        | 3.71        | 0.176        | 2    |
|       |        |       |       |       |     |     |      |     |     | 650      | 3.60        | 4.39        | 0.208        | 2    |
|       |        |       |       |       |     |     |      |     |     | 750      | 4.20        | 5.06        | 0.24         | 2    |
| M2    | M3     | 6.5   | 3     | -     | 3.4 | 6   | 8    | 5   | 12  | 900      | 5.10        | 6.08        | 0.277        | 2    |
|       |        |       |       |       |     |     |      |     |     | 425      | 2.72        | 3.83        | 0.18         | 1    |
|       |        |       |       |       |     |     |      |     |     | 595      | 4.08        | 5.36        | 0.26         | 1    |
|       |        |       |       |       |     |     |      |     |     | 850      | 6.12        | 7.65        | 0.34         | 1    |
|       |        |       |       |       |     |     |      |     |     | 1020     | 7.48        | 9.18        | 0.42         | 2    |
|       |        |       |       |       |     |     |      |     |     | 1275     | 9.52        | 11.48       | 0.5          | 2    |
|       |        |       |       |       |     |     |      |     |     | 1445     | 10.88       | 13.01       | 0.58         | 2    |
| 1700  | 12.92  | 15.30 | 0.68  | 2     |     |     |      |     |     |          |             |             |              |      |
| M3    | M4     | 9     | 4.5   | 10    | 5.5 | 8   | 10.5 | 7   | 18  | 910      | 7.80        | 12.74       | 0.57         | 1    |
|       |        |       |       |       |     |     |      |     |     | 1300     | 11.70       | 18.20       | 0.8          | 1    |
|       |        |       |       |       |     |     |      |     |     | 1820     | 16.90       | 25.48       | 1.03         | 1    |
|       |        |       |       |       |     |     |      |     |     | 2210     | 20.80       | 30.94       | 1.26         | 1    |
|       |        |       |       |       |     |     |      |     |     | 2730     | 26.00       | 38.22       | 1.49         | 3    |
|       |        |       |       |       |     |     |      |     |     | 3120     | 29.90       | 43.68       | 1.72         | 3    |
| 3510  | 33.80  | 49.14 | 1.95  | 4     |     |     |      |     |     |          |             |             |              |      |

Ordering example: 1 Frictionless table NK 3-105 or 1 Frictionless table NK 3-105-B

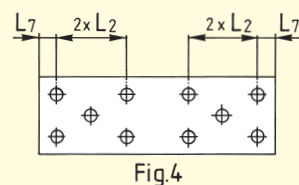
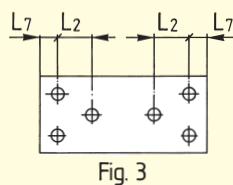
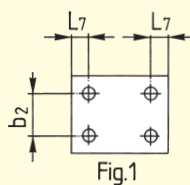


| Order No.       | Dimensions (mm) |            |       |            |     |         |       |         |       |       |         |       |    |       |       |       |         |    |       |  |
|-----------------|-----------------|------------|-------|------------|-----|---------|-------|---------|-------|-------|---------|-------|----|-------|-------|-------|---------|----|-------|--|
|                 | A               | B          | $D_w$ | H          | L   | $L_1$   | $L_2$ | * $L_3$ | $L_4$ | $L_5$ | * $L_6$ | $L_7$ | b  | $b_1$ | $b_2$ | $b_3$ | * $b_4$ | d  | $d_1$ |  |
| <b>NK 6-110</b> |                 |            |       | <b>60</b>  | 110 | 1 × 50  |       | -       |       | 16.5  |         |       |    |       |       |       |         |    |       |  |
| <b>NK 6-160</b> |                 |            |       | <b>95</b>  | 160 | 2 × 50  |       | 1 × 50  |       | 24    |         |       |    |       |       |       |         |    |       |  |
| <b>NK 6-210</b> |                 |            |       | <b>130</b> | 210 | 3 × 50  |       | 2 × 50  |       | 31.5  |         |       |    |       |       |       |         |    |       |  |
| <b>NK 6-260</b> | <b>45</b>       | <b>100</b> | 6     | <b>165</b> | 260 | 4 × 50  | 50    | 3 × 50  | 30    | 39    | 55      | 10    | 64 | 26    | 60    | 92    | 50      | 11 | 7     |  |
| <b>NK 6-310</b> |                 |            |       | <b>200</b> | 310 | 5 × 50  |       | 4 × 50  |       | 46.5  |         |       |    |       |       |       |         |    |       |  |
| <b>NK 6-360</b> |                 |            |       | <b>235</b> | 360 | 6 × 50  |       | 5 × 50  |       | 54    |         |       |    |       |       |       |         |    |       |  |
| <b>NK 6-410</b> |                 |            |       | <b>265</b> | 410 | 7 × 50  |       | 6 × 50  |       | 64    |         |       |    |       |       |       |         |    |       |  |
| <b>NK 9-210</b> |                 |            |       | <b>130</b> | 210 | 1 × 100 |       | -       |       | 27    |         |       |    |       |       |       |         |    |       |  |
| <b>NK 9-310</b> | <b>60</b>       | <b>145</b> | 9     | <b>180</b> | 310 | 2 × 100 | 100   | 1 × 100 | 55    | 52    | 105     | 55    | 98 | 46    | 90    | 135   | 80      | 15 | 9     |  |
| <b>NK 9-410</b> |                 |            |       | <b>350</b> | 410 | 3 × 100 |       | 2 × 100 |       | 17    |         |       |    |       |       |       |         |    |       |  |
| <b>NK 9-510</b> |                 |            |       | <b>450</b> | 510 | 4 × 100 |       | 3 × 100 |       | 17    |         |       |    |       |       |       |         |    |       |  |

\* Only with special model B



Layout of the standard attaching holes in the lower section



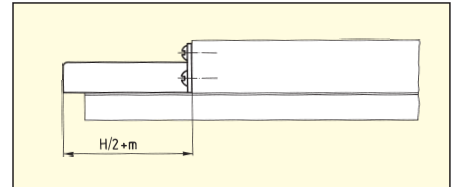
| $d_2$ | $*d_3$ | $h$ | $h_1$ | $h_2$ | $n$ | $n_1$ | $s$ | $t$ | $x$  | $y$ | C in N | $M_L$ in Nm | $M_O$ in Nm | Weight in kg | Fig. |
|-------|--------|-----|-------|-------|-----|-------|-----|-----|------|-----|--------|-------------|-------------|--------------|------|
|       |        |     |       |       |     |       |     |     |      |     | 3710   | 57.24       | 83.48       | 3.07         | 1    |
|       |        |     |       |       |     |       |     |     |      |     | 5830   | 95.40       | 131.18      | 4.46         | 1    |
|       |        |     |       |       |     |       |     |     |      |     | 7420   | 124.02      | 166.95      | 5.85         | 3    |
| M4    | M6     | 13  | 6     | 15    | 8   | 15    | 15  | 16  | 12   | 31  | 9540   | 162.18      | 214.65      | 7.24         | 3    |
|       |        |     |       |       |     |       |     |     |      |     | 11660  | 200.34      | 262.35      | 8.63         | 3    |
|       |        |     |       |       |     |       |     |     |      |     | 13250  | 228.96      | 298.13      | 10.02        | 4    |
|       |        |     |       |       |     |       |     |     |      |     | 15370  | 267.12      | 345.83      | 11.41        | 4    |
|       |        |     |       |       |     |       |     |     |      |     | 11700  | 291.20      | 421.20      | 11.8         | 1    |
| M4    | M8     | 16  | 7     | 20    | 11  | 20    | 22  | 21  | 14.5 | 44  | 18200  | 473.20      | 655.20      | 17.3         | 1    |
|       |        |     |       |       |     |       |     |     |      |     | 20800  | 546.00      | 748.80      | 22.8         | 3    |
|       |        |     |       |       |     |       |     |     |      |     | 24700  | 655.20      | 889.20      | 28.3         | 3    |

Ordering example: 1 Frictionless table NK 6-160 or 1 Frictionless table NK 6-160-B

### 3.6 Accessories

#### Simple Guards (-A)

against the ingress of dirt from above

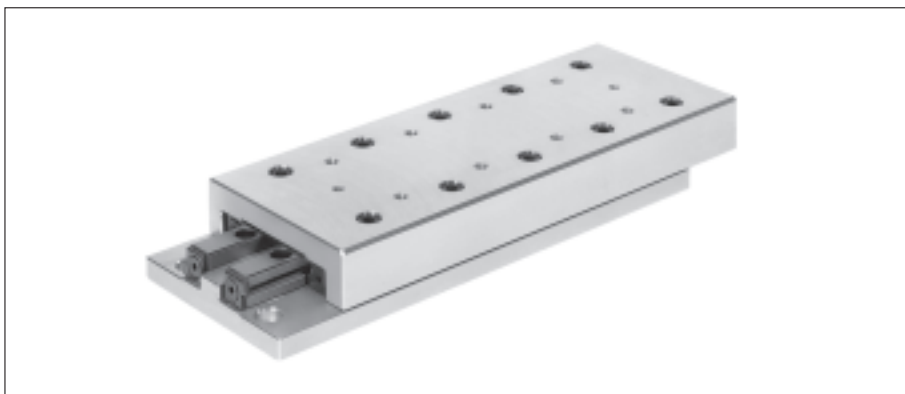


|      |   |   |   |   |      |
|------|---|---|---|---|------|
| Size | 1 | 2 | 3 | 6 | 9    |
| m    | 2 | 3 | 4 | 6 | 11.5 |

## Frictionless Tables Type NKL

**SCHNEEBERGER**  
LINEAR TECHNOLOGY

### 4.1 Frictionless Tables Type NKL



- Single axis model
- Light design, table components in aluminum
- 4 sizes
- With roller cages
- Lengths from 25 to 410 mm
- Strokes from 10 to 280 mm
- For highest accelerations available with FORMULA-S

### 4.2 Material

Aluminum

### 4.3 Standard Model

Type NKL frictionless tables consist of equal length upper and lower sections and type R linear bearings. All tables are equipped with type AC roller cages and type GB endpieces and can be mounted vertically or horizontally. In the upper and lower sections there are standardized attaching holes. The sides opposite to the setscrews in the upper and lower sections can be used for mounting purposes. For the standard model stroke limiting is made by means of two screws in the upper section and one screw in the lower section. These screws can withstand only small forces or impacts in the direction of motion and should not be used as stops.

With FORMULA-S these screws are no more necessary due to the cage assist system.

### 4.4 Special Model

#### **Ball Cages Type AK (-AK)**

For reduced sensitivity to dirt. Lower load carrying capacity

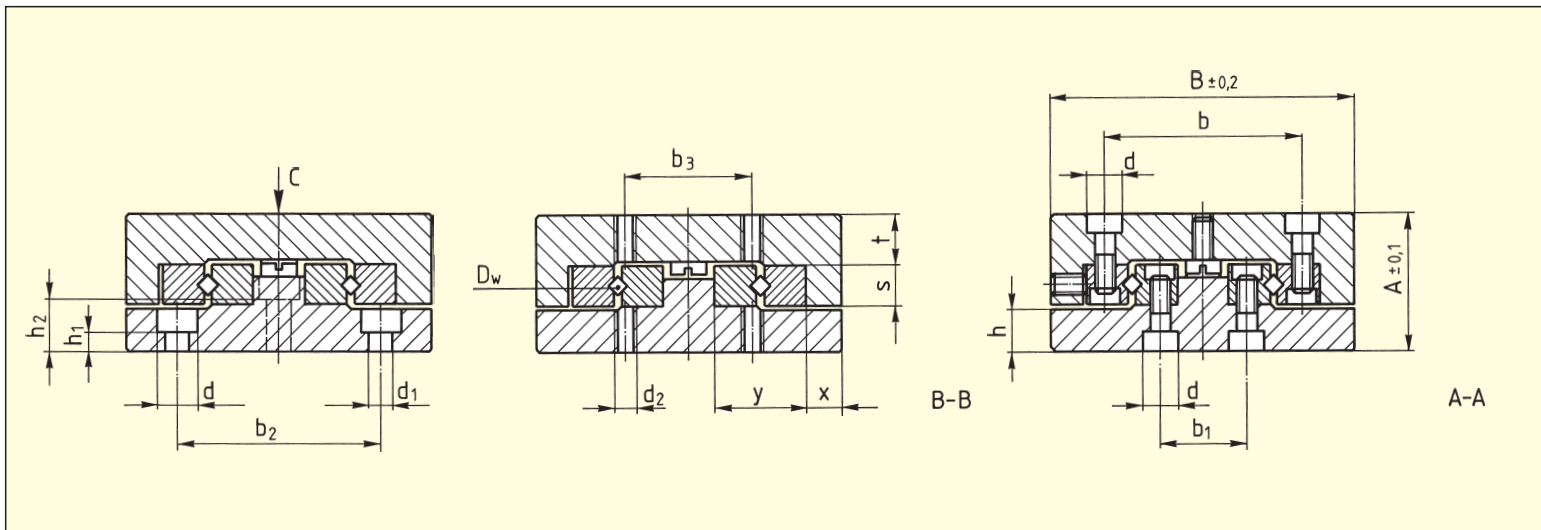
#### **Roller Cages Type EE (-EE)**

Plastic material, only available for size 6. Provides sealing against dirt and dust. Somewhat stiffer motion

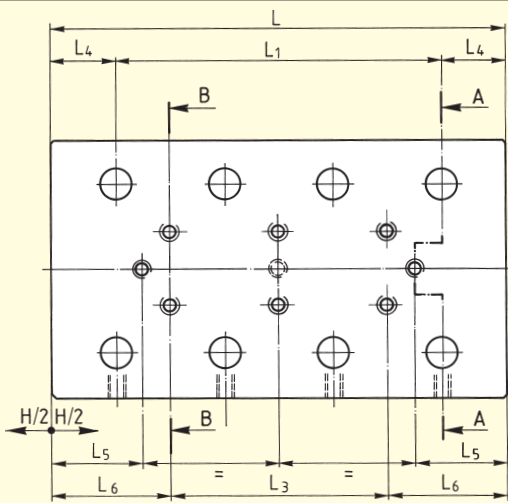
#### **Cage assist integrated (-KS)**

for high dynamics and all assembly orientations for size 3 and 6

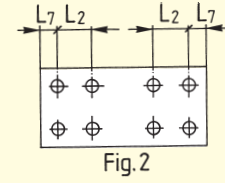
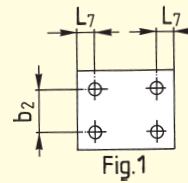
4.5 Specifications



| Order No. | Dimensions (mm) |    |                |    | L   | L <sub>1</sub> | L <sub>2</sub> | L <sub>3</sub> | L <sub>4</sub> | L <sub>5</sub> | L <sub>6</sub> | L <sub>7</sub> | b    | b <sub>1</sub> | b <sub>2</sub> | b <sub>3</sub> | d   |  |
|-----------|-----------------|----|----------------|----|-----|----------------|----------------|----------------|----------------|----------------|----------------|----------------|------|----------------|----------------|----------------|-----|--|
|           | A               | B  | D <sub>w</sub> | H  |     |                |                |                |                |                |                |                |      |                |                |                |     |  |
| NKL 1-25  |                 |    |                | 10 | 25  | 1×10           | —              |                |                | 3.0            |                |                |      |                |                |                |     |  |
| NKL 1-35  |                 |    |                | 18 | 35  | 2×10           |                | 1×10           |                | 4.5            |                |                |      |                |                |                |     |  |
| NKL 1-45  |                 |    |                | 25 | 45  | 3×10           |                | 2×10           |                | 6              |                |                |      |                |                |                |     |  |
| NKL 1-55  | 13              | 30 | 1.5            | 32 | 55  | 4×10           | 10             | 3×10           | 7.5            | 7.5            | 12.5           | 3.5            | 18.4 | 8.6            | 22             | 10             | 4.1 |  |
| NKL 1-65  |                 |    |                | 40 | 65  | 5×10           |                | 4×10           |                | 8.5            |                |                |      |                |                |                |     |  |
| NKL 1-75  |                 |    |                | 45 | 75  | 6×10           |                | 5×10           |                | 11             |                |                |      |                |                |                |     |  |
| NKL 1-85  |                 |    |                | 50 | 85  | 7×10           |                | 6×10           |                | 13.5           |                |                |      |                |                |                |     |  |
| NKL 2-35  |                 |    |                | 18 | 35  | 1×15           |                |                |                | 3              |                |                |      |                |                |                |     |  |
| NKL 2-50  |                 |    |                | 30 | 50  | 2×15           |                | 1×15           |                | 4.5            |                |                |      |                |                |                |     |  |
| NKL 2-65  |                 |    |                | 40 | 65  | 3×15           |                | 2×15           |                | 7              |                |                |      |                |                |                |     |  |
| NKL 2-80  | 21              | 40 | 2              | 50 | 80  | 4×15           | 15             | 3×15           | 10             | 9.5            | 17.5           | 5              | 25   | 11             | 30             | 15             | 6   |  |
| NKL 2-95  |                 |    |                | 60 | 95  | 5×15           |                | 4×15           |                | 12             |                |                |      |                |                |                |     |  |
| NKL 2-110 |                 |    |                | 70 | 110 | 6×15           |                | 5×15           |                | 14.5           |                |                |      |                |                |                |     |  |
| NKL 2-125 |                 |    |                | 80 | 125 | 7×15           |                | 6×15           |                | 17             |                |                |      |                |                |                |     |  |

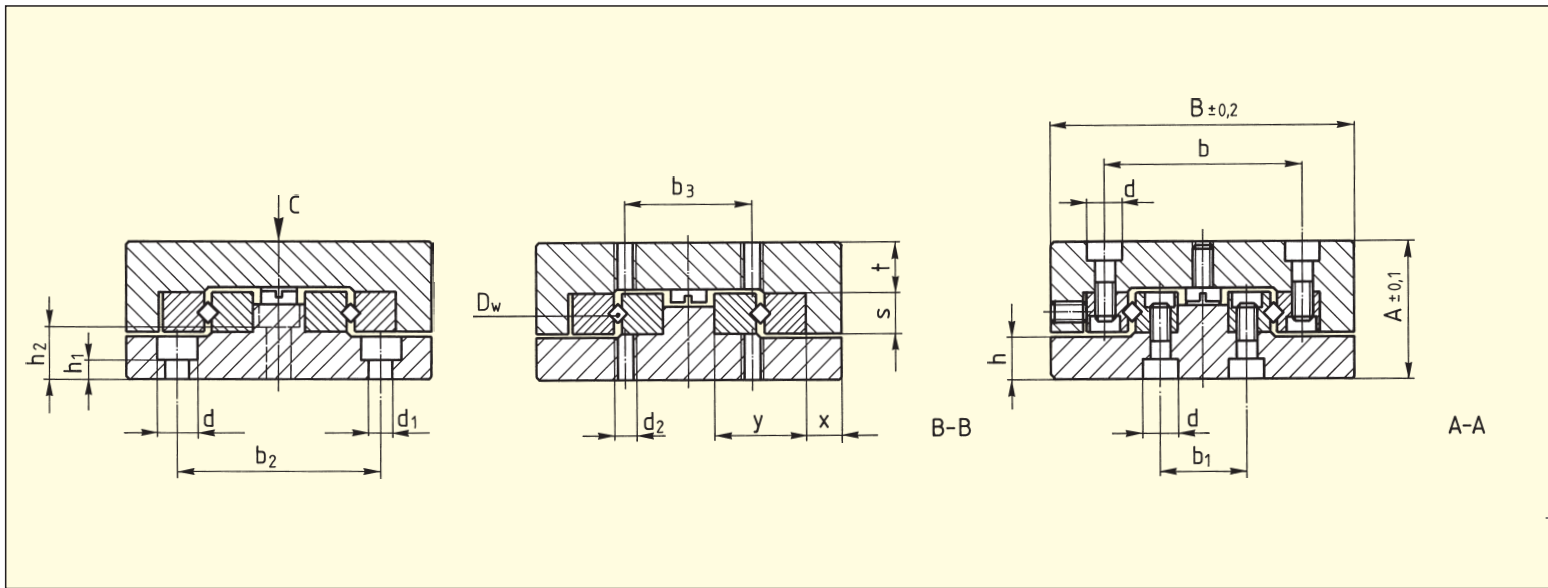


Layout of the standard attaching holes in the lower section

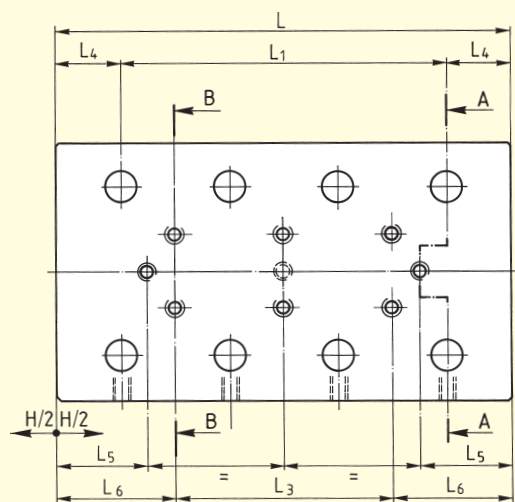


| $d_1$ | $d_2$ | $h$ | $h_1$ | $h_2$ | $s$ | $t$ | $x$ | $y$ | $C$ in N | $M_L$ in Nm | $M_Q$ in Nm | Weight in kg | Fig. |
|-------|-------|-----|-------|-------|-----|-----|-----|-----|----------|-------------|-------------|--------------|------|
| 2.55  | M2    | 4.1 | 1.6   | -     | 4   | 4.5 | 4   | 8.5 | 250      | 1.20        | 1.69        | 0.04         | 1    |
|       |       |     |       |       |     |     |     |     | 350      | 1.80        | 2.36        | 0.05         | 1    |
|       |       |     |       |       |     |     |     |     | 450      | 2.40        | 3.04        | 0.06         | 1    |
|       |       |     |       |       |     |     |     |     | 550      | 3.00        | 3.71        | 0.075        | 2    |
|       |       |     |       |       |     |     |     |     | 650      | 3.60        | 4.39        | 0.09         | 2    |
|       |       |     |       |       |     |     |     |     | 750      | 4.20        | 5.06        | 0.105        | 2    |
|       |       |     |       |       |     |     |     |     | 900      | 5.10        | 6.08        | 0.12         | 2    |
| 3.5   | M3    | 6.7 | 3.2   | -     | 6   | 8   | 5   | 12  | 425      | 2.72        | 3.83        | 0.11         | 1    |
|       |       |     |       |       |     |     |     |     | 595      | 4.08        | 5.36        | 0.15         | 1    |
|       |       |     |       |       |     |     |     |     | 850      | 6.12        | 7.65        | 0.19         | 1    |
|       |       |     |       |       |     |     |     |     | 1020     | 7.48        | 9.18        | 0.23         | 2    |
|       |       |     |       |       |     |     |     |     | 1275     | 9.52        | 11.48       | 0.27         | 2    |
|       |       |     |       |       |     |     |     |     | 1445     | 10.88       | 13.01       | 0.31         | 2    |
|       |       |     |       |       |     |     |     |     | 1700     | 12.92       | 15.30       | 0.35         | 2    |

Ordering example: 1 Frictionless table NKL 2-65



| Order No. | Dimensions (mm) |     |                |     | L   | L <sub>1</sub> | L <sub>2</sub> | L <sub>3</sub> | L <sub>4</sub> | L <sub>5</sub> | L <sub>6</sub> | L <sub>7</sub> | b  | b <sub>1</sub> | b <sub>2</sub> |  |
|-----------|-----------------|-----|----------------|-----|-----|----------------|----------------|----------------|----------------|----------------|----------------|----------------|----|----------------|----------------|--|
|           | A               | B   | D <sub>w</sub> | H   |     |                |                |                |                |                |                |                |    |                |                |  |
| NKL 3-55  |                 |     |                | 30  | 55  | 1 × 25         |                |                |                | 5.5            |                |                |    |                |                |  |
| NKL 3-80  |                 |     |                | 45  | 80  | 2 × 25         |                | 1 × 25         |                | 10.5           |                |                |    |                |                |  |
| NKL 3-105 |                 |     |                | 60  | 105 | 3 × 25         |                | 2 × 25         |                | 15.5           |                |                |    |                |                |  |
| NKL 3-130 |                 |     |                | 75  | 130 | 4 × 25         |                | 3 × 25         |                | 20.5           |                |                |    |                |                |  |
| NKL 3-155 |                 |     |                | 90  | 155 | 5 × 25         |                | 4 × 25         |                | 25.5           |                |                |    |                |                |  |
| NKL 3-180 | 25              | 60  | 3              | 105 | 180 | 6 × 25         | 25             | 5 × 25         | 15             | 30.5           | 27.5           | 10             | 39 | 17             | 40             |  |
| NKL 3-205 |                 |     |                | 130 | 205 | 7 × 25         |                | 6 × 25         |                | 30.5           |                |                |    |                |                |  |
| NKL 3-230 |                 |     |                | 155 | 230 | 8 × 25         |                | 7 × 25         |                | 30.5           |                |                |    |                |                |  |
| NKL 3-255 |                 |     |                | 180 | 255 | 9 × 25         |                | 8 × 25         |                | 30.5           |                |                |    |                |                |  |
| NKL 6-110 |                 |     |                | 60  | 110 | 1 × 50         |                |                |                | 16             |                |                |    |                |                |  |
| NKL 6-160 |                 |     |                | 95  | 160 | 2 × 50         |                | 1 × 50         |                | 23.5           |                |                |    |                |                |  |
| NKL 6-210 |                 |     |                | 130 | 210 | 3 × 50         |                | 2 × 50         |                | 31             |                |                |    |                |                |  |
| NKL 6-260 | 40              | 100 | 6              | 165 | 260 | 4 × 50         | 50             | 3 × 50         | 30             | 38.5           | 55             | 10             | 64 | 26             | 60             |  |
| NKL 6-310 |                 |     |                | 200 | 310 | 5 × 50         |                | 4 × 50         |                | 46             |                |                |    |                |                |  |
| NKL 6-360 |                 |     |                | 265 | 360 | 6 × 50         |                | 5 × 50         |                | 38.5           |                |                |    |                |                |  |
| NKL 6-410 |                 |     |                | 280 | 410 | 7 × 50         |                | 6 × 50         |                | 56             |                |                |    |                |                |  |



Layout of the standard attaching holes in the lower section

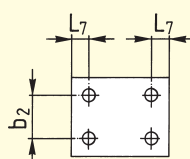


Fig.1

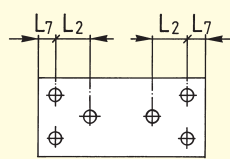


Fig.3

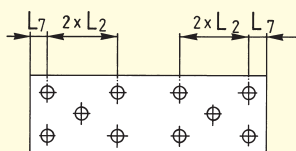


Fig.4

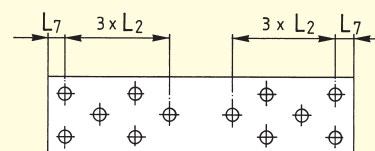


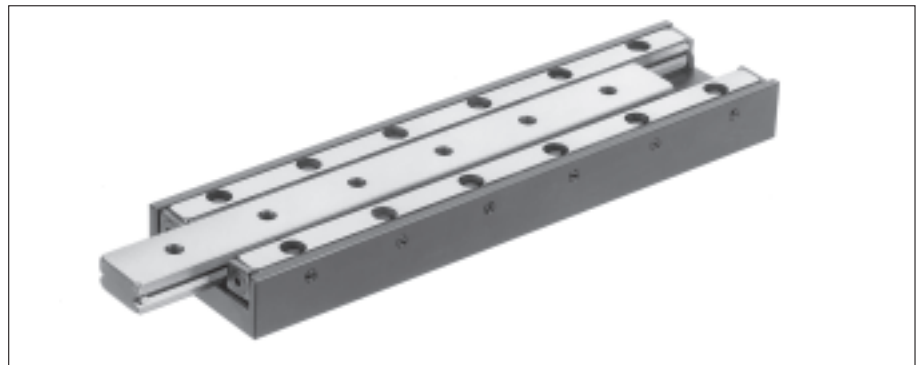
Fig.5

| $b_3$ | $d$ | $d_1$ | $d_2$ | $h$  | $h_1$ | $h_2$ | $s$ | $t$ | $x$ | $y$ | C in N | $M_L$ in Nm | $M_Q$ in Nm | Weight in kg | Fig. |
|-------|-----|-------|-------|------|-------|-------|-----|-----|-----|-----|--------|-------------|-------------|--------------|------|
|       |     |       |       |      |       |       |     |     |     |     | 910    | 7.80        | 12.74       | 0.29         | 1    |
|       |     |       |       |      |       |       |     |     |     |     | 1300   | 11.70       | 18.20       | 0.42         | 1    |
|       |     |       |       |      |       |       |     |     |     |     | 1820   | 16.90       | 25.48       | 0.55         | 1    |
|       |     |       |       |      |       |       |     |     |     |     | 2210   | 20.80       | 30.94       | 0.68         | 1    |
| 25    | 7.5 | 4.5   | M4    | 8.2  | 3.2   | 7.5   | 8   | 8.5 | 7   | 18  | 2730   | 26.00       | 38.22       | 0.81         | 3    |
|       |     |       |       |      |       |       |     |     |     |     | 3120   | 29.90       | 43.68       | 0.94         | 3    |
|       |     |       |       |      |       |       |     |     |     |     | 3510   | 33.80       | 49.14       | 1.07         | 4    |
|       |     |       |       |      |       |       |     |     |     |     | 3770   | 36.40       | 52.78       | 1.2          | 4    |
|       |     |       |       |      |       |       |     |     |     |     | 4160   | 40.30       | 58.24       | 1.33         | 5    |
|       |     |       |       |      |       |       |     |     |     |     | 3710   | 57.24       | 83.48       | 1.5          | 1    |
|       |     |       |       |      |       |       |     |     |     |     | 5830   | 95.40       | 131.18      | 2.25         | 1    |
|       |     |       |       |      |       |       |     |     |     |     | 7420   | 124.02      | 166.95      | 3            | 3    |
| 50    | 11  | 7     | M6    | 11.5 | 4.5   | 12.5  | 15  | 13  | 12  | 31  | 9540   | 162.18      | 214.65      | 3.75         | 3    |
|       |     |       |       |      |       |       |     |     |     |     | 11660  | 200.34      | 262.35      | 4.5          | 3    |
|       |     |       |       |      |       |       |     |     |     |     | 12720  | 219.42      | 286.20      | 5.25         | 3    |
|       |     |       |       |      |       |       |     |     |     |     | 14840  | 257.58      | 333.90      | 6            | 3    |

Ordering example: 1 Frictionless table NKL 6-260



**5.1 Micro Frictionless Tables Type ND**



- Single axis model in steel
- 3 sizes
- With roller cages
- Lengths from 25 to 155 mm
- Strokes from 12 to 90 mm
- Low friction force
- For highest accuracy requirements

**5.2 Material**

Steel

**5.3 Standard Model**

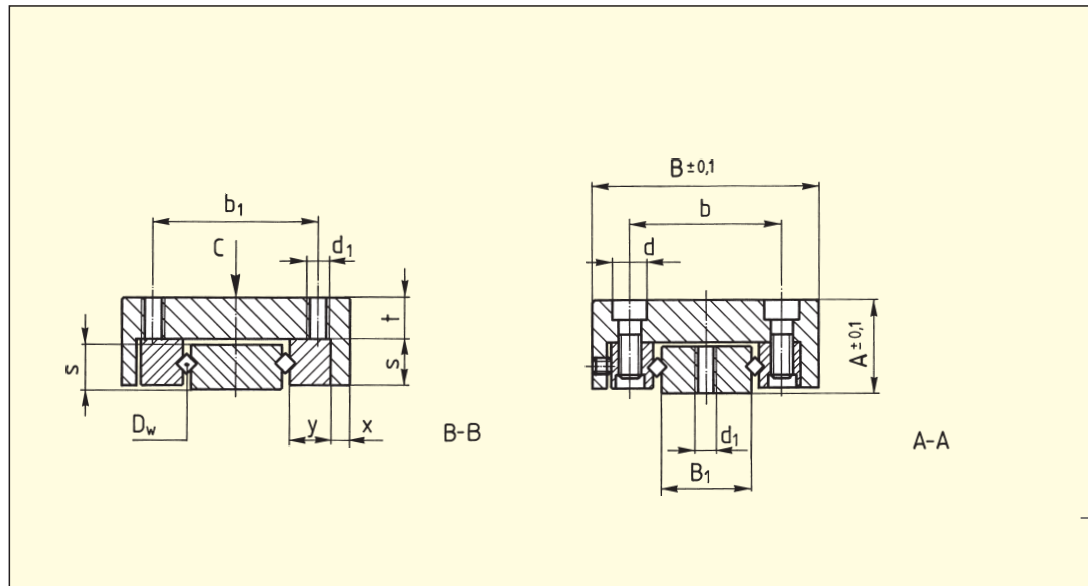
Type ND micro frictionless tables consist of equal length upper and lower sections. The double V-shaped lower section is through hardened. All sizes are equipped with type AC roller cages and can be mounted horizontally or vertically. In the upper and lower sections there are standardized attaching holes.

**5.4 Special Model**

**Ball Cages Type AK (-AK)**

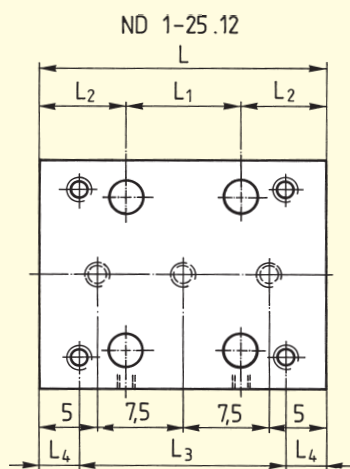
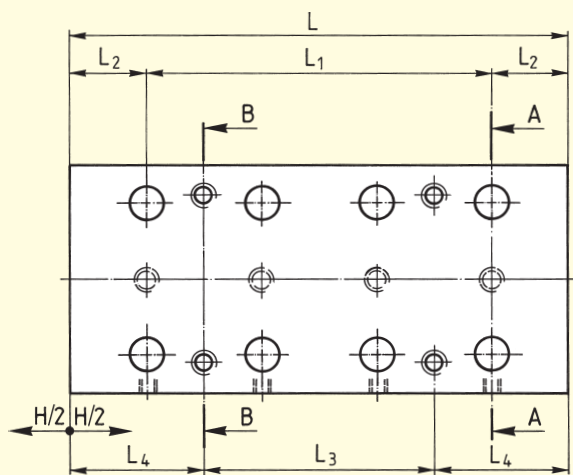
For reduced sensitivity to dirt. Lower load carrying capacity

5.5 Specifications



| Order No.          | Dimensions (mm) |           |                |                |           |     |                |                |                |
|--------------------|-----------------|-----------|----------------|----------------|-----------|-----|----------------|----------------|----------------|
|                    | A               | B         | B <sub>1</sub> | D <sub>w</sub> | H         | L   | L <sub>1</sub> | L <sub>2</sub> | L <sub>3</sub> |
| <b>ND 1-25.12</b>  |                 |           |                |                | <b>12</b> | 25  | 1 × 10         |                | 1 × 18         |
| <b>ND 1-35.18</b>  |                 |           |                |                | <b>18</b> | 35  | 2 × 10         | 7.5            | 1 × 28         |
| <b>ND 1-45.25</b>  | <b>8</b>        | <b>20</b> | 7              | 1.5            | <b>25</b> | 45  | 3 × 10         |                | 1 × 20         |
| <b>ND 1-55.32</b>  |                 |           |                |                | <b>32</b> | 55  | 4 × 10         |                | 1 × 30         |
| <b>ND 2-65.40</b>  |                 |           |                |                | <b>40</b> | 65  | 3 × 15         |                | 1 × 30         |
| <b>ND 2-80.50</b>  | <b>12</b>       | <b>30</b> | 12             | 2              | <b>50</b> | 80  | 4 × 15         | 10             | 1 × 45         |
| <b>ND 2-95.60</b>  |                 |           |                |                | <b>60</b> | 95  | 5 × 15         |                | 2 × 30         |
| <b>ND 3-105.60</b> |                 |           |                |                | <b>60</b> | 105 | 3 × 25         |                | 1 × 50         |
| <b>ND 3-130.75</b> | <b>16</b>       | <b>40</b> | 15             | 3              | <b>75</b> | 130 | 4 × 25         | 15             | 1 × 75         |
| <b>ND 3-155.90</b> |                 |           |                |                | <b>90</b> | 155 | 5 × 25         |                | 2 × 50         |

Layout of the standard attaching holes



| $L_4$ | b    | $b_1$ | d   | $d_1$ | s | t   | x    | y   | C in N | $M_L$ in Nm | $M_Q$ in Nm | Weight in kg |      |
|-------|------|-------|-----|-------|---|-----|------|-----|--------|-------------|-------------|--------------|------|
| 3.5   |      |       |     |       |   |     |      |     | 200    | 0.90        | 0.80        | 0.02         |      |
| 3.5   | 12.4 | 14    | 4.2 | M 2.5 | 4 | 3.5 | 1.95 | 3.9 | 300    | 1.50        | 1.20        | 0.03         |      |
| 12.5  |      |       |     |       |   |     |      |     | 400    | 2.10        | 1.60        | 0.04         |      |
| 12.5  |      |       |     |       |   |     |      |     | 550    | 3.00        | 2.20        | 0.05         |      |
|       |      |       |     |       |   |     |      |     | 765    | 5.44        | 5.16        | 0.16         |      |
| 17.5  | 20   | 22    | 6   | M 3   | 6 | 5.5 | 2.3  | 5.5 | 1020   | 7.48        | 6.89        | 0.19         |      |
|       |      |       |     |       |   |     |      |     | 1190   | 8.84        | 8.03        | 0.24         |      |
|       |      |       |     |       |   |     |      |     | 1690   | 15.60       | 13.52       | 0.47         |      |
| 27.5  | 27   | 30    | 7.5 | M 4   | 8 | 7.5 | 2.5  | 8.3 | 2210   | 20.80       | 17.68       | 0.59         |      |
|       |      |       |     |       |   |     |      |     |        | 2730        | 26.00       | 21.84        | 0.70 |
|       |      |       |     |       |   |     |      |     |        |             |             |              |      |

Ordering example: 1 Micro frictionless table ND 2-80.50



**6.1 Micro Frictionless Tables Type NDN**



- Single axis model in corrosion resistant steel
- 3 sizes
- With ball cage in brass
- Cage centering mechanism which helps to avoid cage creep
- Length from 10 to 80 mm
- Strokes from 5 to 70 mm
- For highest accuracy requirements
- Suitable for high speed applications

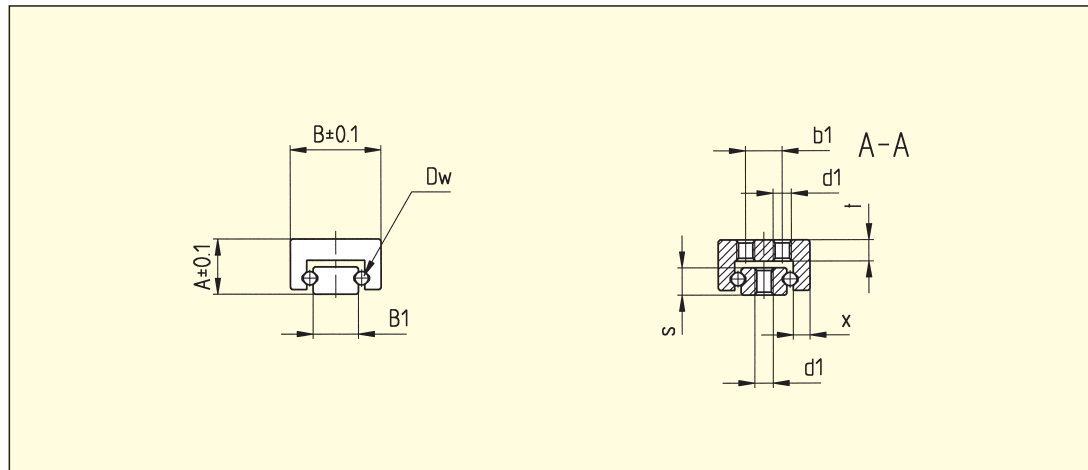
**6.2 Material**

Corrosion resistant steel

**6.3 Standard Model**

The micro frictionless tables NDN consist of upper and lower parts of the same length and can be utilized horizontally or vertically. They consist of only four components; the lower and the upper part made of stainless steel, the brass cage and the stainless steel rolling elements. The U-shaped cage joins the two guideways together. As a result, the susceptibility to cage drift is essentially eliminated. NDN micro frictionless tables, preloaded in assembly to eliminate play, exhibit extremely low push force. NDN products fulfill high speed requirements with great precision and long service life.

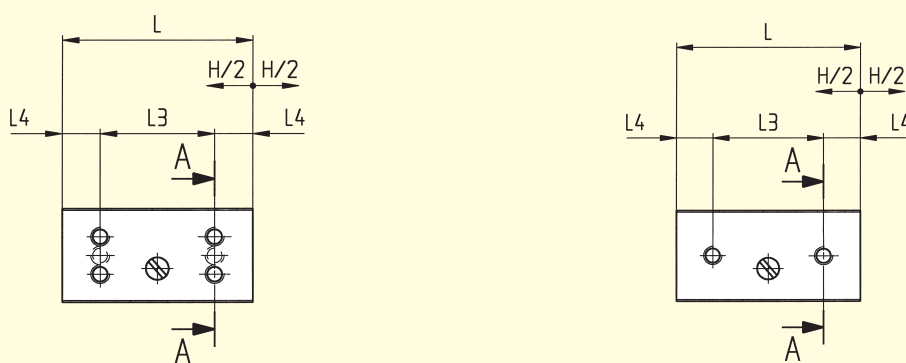
6.4 Specifications



| Order No.           | Dimensions (mm) |           | B <sub>1</sub> | D <sub>w</sub> | H         | L  |
|---------------------|-----------------|-----------|----------------|----------------|-----------|----|
|                     | A               | B         |                |                |           |    |
| <b>NDN 05-10.05</b> |                 |           |                |                | <b>5</b>  | 10 |
| <b>NDN 05-15.10</b> | <b>4</b>        | <b>7</b>  | 4              | 1              | <b>10</b> | 15 |
| <b>NDN 05-20.15</b> |                 |           |                |                | <b>15</b> | 20 |
| <b>NDN 05-25.20</b> |                 |           |                |                | <b>20</b> | 25 |
| <b>NDN 1-15.05</b>  |                 |           |                |                | <b>5</b>  | 15 |
| <b>NDN 1-20.10</b>  |                 |           |                |                | <b>10</b> | 20 |
| <b>NDN 1-25.15</b>  |                 |           |                |                | <b>15</b> | 25 |
| <b>NDN 1-30.20</b>  | <b>6</b>        | <b>10</b> | 5              | 1.5            | <b>20</b> | 30 |
| <b>NDN 1-35.25</b>  |                 |           |                |                | <b>25</b> | 35 |
| <b>NDN 1-40.30</b>  |                 |           |                |                | <b>30</b> | 40 |
| <b>NDN 1-45.35</b>  |                 |           |                |                | <b>35</b> | 45 |
| <b>NDN 1-50.40</b>  |                 |           |                |                | <b>40</b> | 50 |
| <b>NDN 2-30.20</b>  |                 |           |                |                | <b>20</b> | 30 |
| <b>NDN 2-40.30</b>  |                 |           |                |                | <b>30</b> | 40 |
| <b>NDN 2-50.40</b>  | <b>8</b>        | <b>15</b> | 8              | 2.5            | <b>40</b> | 50 |
| <b>NDN 2-60.50</b>  |                 |           |                |                | <b>50</b> | 60 |
| <b>NDN 2-70.60</b>  |                 |           |                |                | <b>60</b> | 70 |
| <b>NDN 2-80.70</b>  |                 |           |                |                | <b>70</b> | 80 |

\* The calculation of the carrying capacity for NDN tables has been performed according DIN 636 part 3. A static reliability factor of 3 is taken into consideration.

Layout of the standard attaching holes in the lower- and upper section  
NDN 05



| L <sub>3</sub> | L <sub>4</sub> | b <sub>1</sub> | d <sub>1</sub> | s   | t   | x   | *C in N | M <sub>L</sub> in Ncm | M <sub>Q</sub> in Ncm | Weight in g |
|----------------|----------------|----------------|----------------|-----|-----|-----|---------|-----------------------|-----------------------|-------------|
| 1 × 5          | 2.5            |                |                |     |     |     | 23      | 1.5                   | 3                     | 2           |
| 1 × 8          | 3.5            | -              | M 1.6          | 2.1 | 1.5 | 1.1 | 27      | 2.2                   | 3.6                   | 3           |
| 1 × 12         | 4              |                |                |     |     |     | 36      | 2.8                   | 4.8                   | 4           |
| 1 × 16         | 4.5            |                |                |     |     |     | 45      | 3.5                   | 6                     | 5           |
| 1 × 8          | 3.5            |                |                |     |     |     | 50      | 9                     | 14                    | 5           |
| 1 × 12         | 4              |                |                |     |     |     | 60      | 11                    | 17                    | 7           |
| 1 × 16         | 4.5            |                |                |     |     |     | 70      | 14                    | 20                    | 10          |
| 1 × 20         | 5              | 4              | M 2            | 3   | 2.3 | 1.8 | 80      | 16                    | 23                    | 12          |
| 1 × 24         | 5.5            |                |                |     |     |     | 90      | 19                    | 26                    | 14          |
| 1 × 28         | 6              |                |                |     |     |     | 100     | 21                    | 28                    | 17          |
| 1 × 32         | 6.5            |                |                |     |     |     | 110     | 24                    | 31                    | 19          |
| 1 × 36         | 7              |                |                |     |     |     | 120     | 26                    | 34                    | 21          |
| 1 × 20         | 5              |                |                |     |     |     | 140     | 40                    | 55                    | 28          |
| 1 × 28         | 6              |                |                |     |     |     | 170     | 50                    | 65                    | 36          |
| 1 × 36         | 7              | 7              | M 2.5          | 4.5 | 2.5 | 2.7 | 200     | 60                    | 75                    | 45          |
| 3 × 15         | 7.5            |                |                |     |     |     | 250     | 80                    | 100                   | 54          |
| 3 × 18         | 8              |                |                |     |     |     | 310     | 100                   | 120                   | 64          |
| 3 × 20         | 10             |                |                |     |     |     | 370     | 120                   | 140                   | 73          |

Ordering example: 1 Frictionless Table NDN 1-30.20

**Technical Information**

**7.1 Acceptance Tolerances**

All SCHNEEBERGER frictionless tables are manufactured as standard with the accuracies indicated in the tables. Measurement is in the unloaded state on a flat surface. The tolerance figures in the tables are for single axis.



| Type       | L       |
|------------|---------|
| <b>NK</b>  | 25-50   |
|            | 55-100  |
|            | 105-160 |
|            | 165-310 |
|            | 315-510 |
| <b>NKL</b> | 25-50   |
|            | 55-100  |
|            | 105-160 |
|            | 165-310 |
|            | 315-410 |
| <b>ND</b>  | 25-50   |
|            | 55-100  |
|            | 105-155 |
| <b>NDN</b> | 15-30   |
|            | 35-50   |
|            | 60-80   |

**7.2 Accuracy**

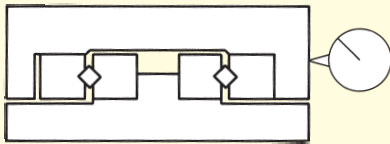
**Straightness and Flatness**

The tolerance for Straightness and Flatness of travel is dependent on the various frictionless table models, the size, the length etc. This tolerance is shown above in chapter 7.1. Closer tolerances can be supplied on request.

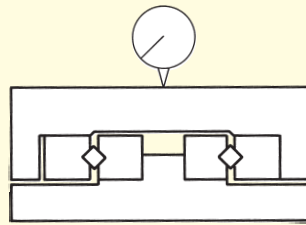
**Parallelism**

The tolerances shown in the tables are achieved by measuring the frictionless tables in the middle position. For this purpose the frictionless tables are placed unloaded on a flat surface.

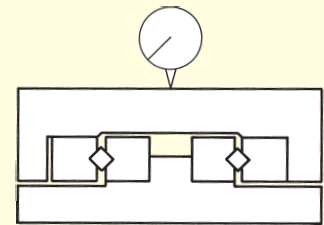
Straightness of Travel in  $\mu\text{m}$   
over Stroke Length; Laterally



Flatness of Travel in  $\mu\text{m}$   
over Stroke Length; at Top



Parallelism in  $\mu\text{m}$  of Table Surfaces;  
in Middle Position



2  
3  
3  
4  
4  
4  
4  
4  
6  
6  
8  
4  
5  
6  
2  
3  
4

2  
2  
3  
3  
4  
4  
4  
6  
6  
8  
4  
5  
6  
2  
3  
4

5  
10  
15  
20  
25  
10  
20  
30  
40  
50  
15  
20  
25  
5  
5  
8

**Height Tolerance**

The height tolerance is  $\pm 0,1$  mm.  
On request, most types can be supplied in  
matched pairs to  $\pm 0,01$  mm.

### 7.3 Materials

#### Linear Bearings and Rolling Elements

Where no contrary specifications are agreed the following are valid:

- Linear bearings material No. 1.2510 or 1.2842
- Rolling elements material No. 1.3505
- NDN material No. 1.4034

#### Table Bodies

Manufactured according to details under each frictionless table type.

### 7.4 Permissible Operating Temperatures

SCHNEEBERGER frictionless tables can be used at operating temperatures of  $-40^{\circ}$  to  $+80^{\circ}\text{C}$ . In cases of doubt, please consult us. Please also note that temperature fluctuations in operation can have an enormous influence when positioning in the micrometer range.

### 7.5 Lubrication

SCHNEEBERGER frictionless tables are lubricated to protect them against corrosion and wear. The initial factory lubrication can, depending on the operating conditions, suffice for years.

Generally, bearing grease on a lithium saponified base (bearing grease KP2K per DIN 51502 respectively DIN 51825) should be used. Drip feed oiling, occasional oiling or lubricating by means of overspill oil are sufficient. To achieve the lowest rolling friction resistance, mineral base oils are recommended (CLP or HLP; viscosities of ISO VG 15 to 100 per DIN 51519). Soluble oil or coolant emulsions should, on the other hand, be kept away from the guides as they dilute or wash away the lubricant. In addition coolant emulsions tend to dry out and become tacky. Lubricants with solid base additives are also unsuitable. Lubrication intervals depend on various factors such as the loading, ambient conditions etc. Experience has shown that lubricating 2–5 times at equal intervals during the calculated operational life suffices.

### 7.6 Permissible Velocities and Accelerations

Under normal conditions SCHNEEBERGER frictionless tables with linear bearings with roller or ball cages can be used at velocities of up to 50 m/min.

The permissible acceleration is, in general,  $50\text{ m/s}^2$ . These figures can, however, be influenced substantially through the selection of the drive, the load and the length etc. In cases of doubt please consult us.

#### With FORMULA-S

The cage remains centered during accelerations up to  $150\text{ m/s}^2$  (15g) and oscillation frequencies up to 25 Hz.

### 7.7 Friction, Running Accuracy and Smoothness

For SCHNEEBERGER frictionless tables with roller or ball cages coefficients of friction range from 0.0005 to 0.003.

In the manufacture of SCHNEEBERGER frictionless tables the requisites for perfect running smoothness are created. SCHNEEBERGER plastic and plastic composite cages also play a large part. For successful application special care must be taken with the mounting of the frictionless tables on an adequately machined, low-deformation base.

You will find further details in the following section.

- 8.1 Horizontal and Vertical Fitting** All applications where the direction of motion is horizontal are designated horizontal fitting. All applications where the direction of motion deviates from the horizontal are designated vertical fitting. All SCHNEEBERGER frictionless tables have preloaded anti-friction guideways and can, therefore, accept moments and forces in any direction (see also 9.2). FORMULA-S allows all mounting orientations with no cage creep anymore.
- 8.2 Attaching Frictionless Tables** SCHNEEBERGER frictionless tables are normally attached to the base structure with standardized through holes in the base. Various models have, additionally, threaded holes which permit alternate mounting.
- 8.3 Preloading Frictionless Tables** All SCHNEEBERGER frictionless tables have playfree, preloaded antifriction guideways and can, therefore, be used without any additional measures accomplished. Preloading is by means of adjusting screws or ball selection by diameter and needs no readjustment.
- 8.4 Design of Base Unit** The advantages of SCHNEEBERGER frictionless tables are best exploited on a rigid, low-deformation, accurately machined construction. The surface quality of the supporting surfaces has no direct influence on the operation and run-out behavior of the frictionless tables. We recommend however, that they should be manufactured with a surface roughness of between N5 and N7, in order to achieve the desired planeness and parallelism tolerances.
- 8.5 Accessories for Frictionless Tables** According to the type, SCHNEEBERGER frictionless tables type NK can be supplied with accessories. You can find the relative information under the respective frictionless table types. Should the standard accessories not meet your series production requirements, we are in a position to supply customized components.

## 9 Dimensioning Frictionless Tables

### 9.1 Load Carrying Capacity and Operational Life

In applying frictionless tables, the primary consideration is the relationship of the applied load to the load carrying capacity. The elastic deformation (rigidity) must also be evaluated. The load carrying capacities of the individual frictionless tables are based on the fundamentals established by ISO and DIN for the calculation of roller bearings (ISO 281, for NDN DIN 636, part 3). The load carrying capacity  $C$  is the load with which a nominal operational life of 100 000 m travel is achieved, given that the size and direction of the load remain unchanged and the line of application is vertical onto the frictionless table surface.

By definition, the latest research results have shown that the static load should not be greater than the dynamic load. The reason for this lies in the fatigue behavior which is always initiated at the highest loaded point. In the case of an absolutely constant load during standstill and in operation, the fatigue process will start at that point where the static load is present longest. The  $C$ -values given are used in the operational life equation to calculate the operational life resulting with a given load.

The operational life is the travel in metres which is made by a frictionless table before the first signs of metal fatigue appear on any of the anti-friction guideway components. The  $B_{10}$  operational life is achieved when 90% of a statistical sample of frictionless tables meet or exceed the prescribed amount of travel.

#### Dynamic loading capacity $C$

As previously mentioned, the load carrying capacity  $C$  is based on an operational life of 100 000 m. Some manufacturers use, for various reasons, a larger load carrying capacity with 50 000 metres operational life. The  $C_{50}$  values for SCHNEEBERGER frictionless tables are calculated as follows:

$$C_{50} = C \cdot 1.23 \text{ for frictionless tables with rollers}$$

$$C_{50} = C \cdot 1.26 \text{ for frictionless tables with balls}$$

#### Life Expectancy

According to the DIN and ISO standards, the load carrying capacities for roller bearings are given in such a manner that from the operational life equation a value results which, with 90% probability, will be exceeded. Should this probability not suffice, then the operational life must be shortened with the  $a_1$  factor per the following tables:

| Life Expectancy % | 90 | 95   | 96   | 97   | 98   | 99   |
|-------------------|----|------|------|------|------|------|
| $a_1$             | 1  | 0.62 | 0.53 | 0.44 | 0.33 | 0.21 |

**SCHNEEBERGER REPRESENTATIVES**

**AUSTRALIA**

RJM Engineering Supplies  
Tamar Street 13  
VIC 3134 Ringwood  
Phone +61 398 79 4881  
Fax +61 398 79 3700  
E-Mail: rjmeng@rjmeng.com.au

**BRAZIL**

IBATECH Tecnologia.Ltda.  
Av. Amazonas, 974  
90240-542 Porto Alegre-RS  
Phone +55 51 3337 1481  
Fax +55 51 3337 5265  
E-Mail: ibacorp@iba-corp.com

**CHINA**

Servo Dynamics Co., Ltd.  
12#-2-1 Chuangye Building  
No. 125 Binhe Road,  
Suzhou New District  
215011 Jiangsu  
Phone +86 (512) 6809 7576  
Fax +86 (512) 6809 7690  
E-Mail: info@servodynamics.com.cn

**DENMARK**

HERSTAD + PIPER A/S  
Jernholmen 48c  
2650 Hvidovre  
Phone +45 36 77 4000  
Fax +45 36 77 7740  
E-Mail: mail@herstad-piper.dk

**FINLAND**

EIE Maskin Oy  
PL, 80 Asematie 1  
10601 Tammissaari  
Phone +358 19 223 9100  
Fax +358 19 223 9199

**INDIA**

NRB Bearings Limited Agency Division  
405'A' Wing, Mittal Towers  
47 (6) M.G. Road  
560 001 Bangalore  
Phone 080-2558 6911 / 2559 6089 /  
2558 6995  
Fax 080-2559 6091  
E-Mail: maheshwari@nrbbearings.co.in

NRB Bearings Limited Agency Division  
Office Mumbai  
Dhannur, 15 Sir P M Road, Fort  
400 001 Mumbai  
Phone 022-2266 4160 / 2266 4998  
Fax 022-2266 0412 / 2267 9850  
E-Mail: k.mohan@nrbbearings.co.in

Office:

Mr. Bevin Sequeira Palmyra  
Plot 593-B, 21st Road  
400 050 Bandra, Mumbai  
Phone +91 022 2604 8831  
E-Mail: bfsequeira@yahoo.co.uk

**NETHERLANDS**

Office:  
Mr. Maurice Bastings  
Beekenweg 65  
NL-6235CB Ulestraten  
Phone +31 (0)43 365 4532  
Fax +31 (0)43 365 3579  
E-Mail: info-nl@schneeberger.com

**POLAND**

TECHNIKA LINIOWA  
ROLLICO Rolling Components  
Ul. PCK 24  
42-700 Lubliniec  
Phone +48 34 353 0838  
Fax +48 34 351 0431  
E-Mail: info@rollico.com

**REPUBLIC OF KOREA**

Office:  
Mr. Ki-Ho Kim  
Kodeok 2 danji Jukong APT.261-402  
Kodeok 2-dong, Kangdong-Ku  
134-757 Seoul  
Phone +82 2 442 0971  
Fax +82 2 442 2971  
E-Mail: khkim@schneeberger.com

LIATO Korea Inc.

12-15, Moonhyung-Ri, Opo-Eup  
Kwangjoo-City  
464-894 Kyonggi-Do  
Phone +82 31 766 1434(6)  
Fax +82 31 766 1438  
E-Mail: imwos@kornet.net

Lubo Industries Ltd.

640-12, Gojan-Dong  
Namdong-Ku  
Incheon  
Phone +82 32 821 5656  
Fax +82 32 821 9501  
E-Mail: luboinc@luboinc.co.kr

NUMACS Corporation Ltd.

Rm303, Namdong building, 987-11  
Mansu-dong, Namdung-ku  
405-204 Incheon  
Phone +82 32 461 8110  
Fax +82 32 461 8112  
E-Mail: casypark@unitel.co.kr

INTECH Automation Inc.

FL 13,94-46, Youngdeungpo 7-Ga  
Youngdeungpo-Ku  
150-037 Seoul  
Phone +82 2 2632 6770  
Fax +82 2 2632 6880  
E-Mail: intech01@kornet.net

**SINGAPORE**

Servo Dynamics  
Kaki Bukit Road 1 No. 10  
#01-30 Kaki Bukit Park  
416175 Singapore  
Phone +65 6844 0288  
Fax +65 6844 0070  
E-Mail: servodynamics@servo.com.sg

**SLOVAKIA**

LINEATECH, s.r.o.  
ul. Puste c. 861  
013 22 Rosina  
Phone +421 41 500 5177  
Fax +421 41 500 5178  
Mobile +421 905 253721  
E-Mail: sukala@lineatech.sk

**SOUTH AFRICA**

Fischli & Fuhrmann Ltd.  
P.O.Box 253  
1600 Isando Transval  
Phone +27 11 974 5571  
Fax +27 11 974 5574  
E-Mail: info@ffu.co.za

Office:

Mr. Mike Owen  
LIATO S A (PTY) LTD  
513 Marine Drive  
4052 Durban  
Phone +27 31 467 179  
Fax +27 31 467 0179  
E-Mail: mike@liato.co.za

**SWEDEN**

EIE Maskin AB  
Box 13031  
402 51 Goeteborg  
Phone +46 31 707 4800  
Fax +46 31 195 255  
E-Mail: eie@eie.se

**TAIWAN**

Ever Bright Precision Ltd.  
1F, no. 52, Lane 10  
Phone +886 2 2659 5586  
Fax +886 2 2659 5587  
E-Mail: sales@everbright.com.tw

**TURKEY**

Office:  
BIRLIK RULMAN PAZ.LTD.STI.  
Kemeralti Cad. No:20  
80030 Karakoy-Istanbul  
Phone +90 212 249 5495  
Fax +90 212 244 2140  
E-Mail: birlik@birlikrulman.com

**SCHNEEBERGER – «Essentials for the Best!»**

**CATALOGUES**

MONORAIL and AMS  
LINEAR BEARINGS and Recirculating units  
SLIDES  
MINIRAIL  
AUTOMATION



**BROCHURES**

NanoX  
MINIMODULE  
SYSTEMS  
Mineral casting RHENOCAST®  
SPECIAL COMPONENTS



**SCHNEEBERGER COMPANIES**

**SWITZERLAND**

SCHNEEBERGER AG  
St. Urbanstrasse 12  
4914 Roggwil/BE  
Phone +41 62 918 41 11  
Fax +41 62 918 41 00

E-Mail:  
info-ch@schneeberger.com  
[www.schneeberger.com](http://www.schneeberger.com)

**GERMANY**

SCHNEEBERGER GmbH  
Gräfenau, Postfach 70  
75339 Höfen/Enz  
Phone +49 7081 782 0  
Fax +49 7081 782 124

E-Mail:  
info-d@schneeberger.com

**ITALY**

SCHNEEBERGER S.p.A.  
Via S. Gottardo, 10  
21021 Angera VA  
Phone +39 0331 93 2010  
Fax +39 0331 93 1655

E-Mail:  
info-i@schneeberger.com

**USA**

SCHNEEBERGER Inc.  
11 DeAngelo Drive  
Bedford, MA 01730  
Phone +1 781 271 0140  
Fax +1 781 275 4749

E-Mail:  
info-usa@schneeberger.com

**CZECH REPUBLIC**

SCHNEEBERGER Mineralgusstechnik s.r.o.  
Průmyslový park 32/20  
350 02 Cheb – Dolní Dvory  
Phone +420 354 400 9417  
Fax +420 354 400 940

E-Mail:  
info-mineralguss@schneeberger.com

**CHINA**

SCHNEEBERGER (Shanghai) Co., Ltd.  
Denghui Lu 1128, Minhand District  
Shanghai 201108  
Phone +86 21 6209 0037 / 27  
Fax +86 21 6209 0102

E-Mail:  
info-cn@schneeberger.com

**JAPAN**

Nippon SCHNEEBERGER KK  
3-23-12 Shimoura, Setagaya-ku  
Tokyo 154-0002  
Phone +81 3 5779 7339  
Fax +81 3 3487 6010

E-Mail:  
info-j@schneeberger.com

**SCHNEEBERGER SALES DEPARTMENTS**

**AUSTRIA**

Phone +43 2 2387 2945  
Fax +43 2 2387 2983  
Mobile +43 67 6935 1035

E-Mail:  
info-a@schneeberger.com

**BELGIUM, THE NETHERLANDS AND LUXEMBOURG**

Phone +31 4 3365 4532  
Fax +31 4 3365 3579  
Mobile +31 6 5326 3929

E-Mail:  
info-nl@schneeberger.com

**FRANCE**

Phone +33 4 7239 5223  
Fax +33 4 7239 5224  
Mobile +33 6 0941 6269

E-Mail:  
info-f@schneeberger.com

**GREAT BRITAIN**

Phone +44 16 2582 7708  
Fax +44 16 2582 7780  
Mobile +44 77 8814 5645

E-Mail:  
info-uk@schneeberger.com

**ISRAEL**

Phone +972 3 546 1082  
Fax +972 3 546 1564  
Mobile +972 5 0551 7920

E-Mail:  
info-il@schneeberger.com

**KOREA**

Phone +82 2442 0971  
Fax +82 2442 2971  
Mobile +82 1 6202 0971

E-Mail:  
info-k@schneeberger.com

**POLAND, SLOVAKIA AND CZECH REPUBLIC**

Phone +420 5 4725 0333  
Fax +420 5 4725 0444  
Mobile +420 6 0278 4077

E-Mail:  
info-cz@schneeberger.com

**SPAIN AND PORTUGAL**

Phone +34 6 4991 9740  
Fax +34 9 4687 0973  
Mobile +34 6 4991 9740

E-Mail:  
info-es@schneeberger.com