



# Operating devices

– single fault safe with HD15 plug



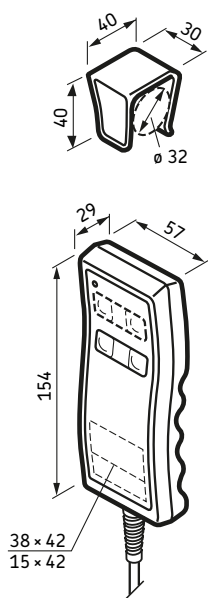
### Hand switch EHA3

The EHA3 hand switch serves for operating one or more actuators or pillars. There is a push-button field on the front panel of the hand switch for each drive to be actuated.

This panel consists of two push-buttons arranged at the same height. The actuator is operated by pressing one of the buttons.

The relevant function (Up/Down) is determined and triggered by the button actuation. A bicolour pilot lamp indicates the battery status.\*

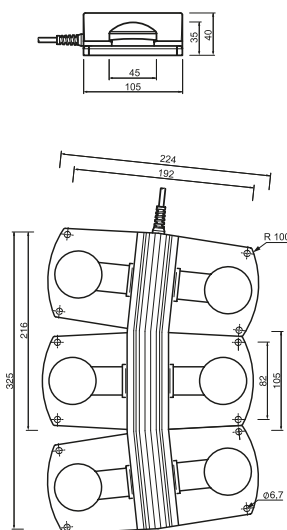
\* Depending on the control box.



### Foot switches STJ

Foot switches are fitted to desks, couches and chairs for simple, ergonomic control of adjustment actuators. The modular design of these stylish foot switches allows control of 1-3 actuator functions or up to 3 memory positions.

Foot switches are ergonomically positioned so that they can be operated easily both by standing and seated persons. The arrangement of the buttons has been specifically selected to ensure easy foot control.

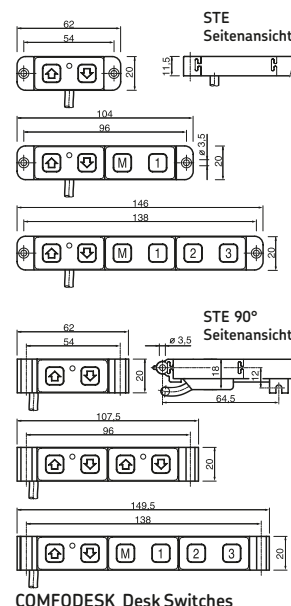


### Desk switches STE

Desk switches are simple, unobtrusive control devices for adjusting actuators in desks, chairs, couches and other applications. They can be easily fitted to desks without compromising the desk design.

Desk switches are available in versions for the operation of 1-3 drive functions or up to 3 memory positions.

Depending on the particular models, they can be secured visibly to the edge of the desk or may be concealed beneath it. A bicolour pilot lamp indicates the battery status.\*



### Hand switch EHA3

### Foot switches STJ

### Desk switches STE

Technical data	Units	Hand switches	Foot switches	Desk switches
Voltage	VDC	12	12	12
Current	mA	50	50	50
Connecting cable	m	2,3 m, coiled	2,5 m, straight	2,5 m, straight or coiled
Ambient temperature	°C	0° to + 40°	0° to + 40°	0° to + 40°
Protection class	IP	66	X5	X0
Colour	-	Grey	Grey and blue	Black
Weight	g	220	500, 1 000 or 1 500	90 to 140
Setscrew	-	-	M5 x (8 + material length)	Oval flat-head screw, DIN95/ISO 2010-3 x20/30
Carrying bolt	-	-	-	Round-headed wood screw, SN 212800/ISO 1207-3 x 12